

LOC/DME I-LBJ 110.7 Chan 44	APP CRS 047°	Rwy Idg 5000 TDZE 1642 Apt Elev 1642
--	------------------------	---

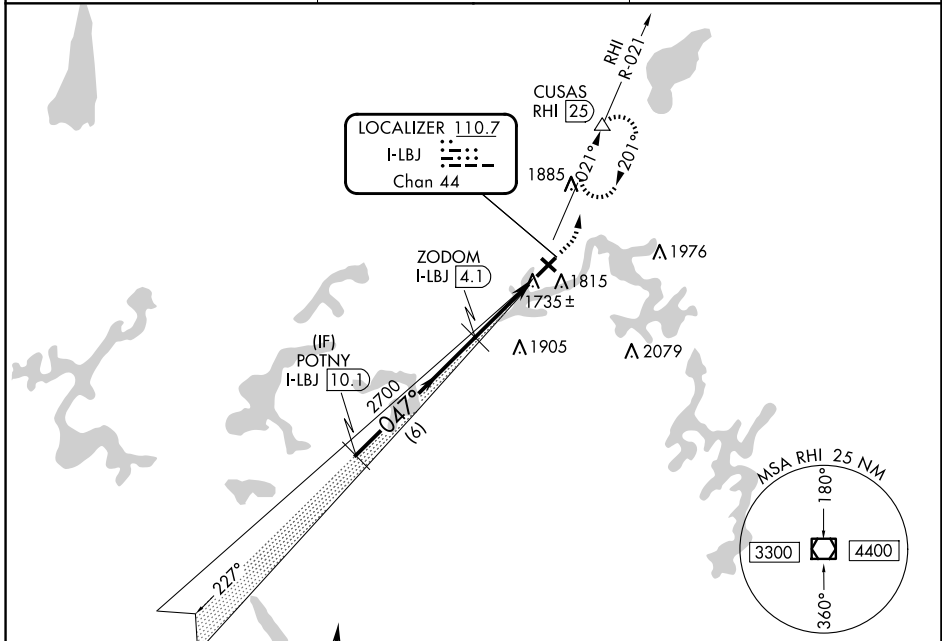
LOC/DME RWY 4

EAGLE RIVER UNION (EGV)

NA Visibility reduction by helicopters NA. When local altimeter setting not received, use Minocqua-Woodruff altimeter setting and increase all MDAs 60 feet and Circling Cat C/D visibility 1/4 SM.

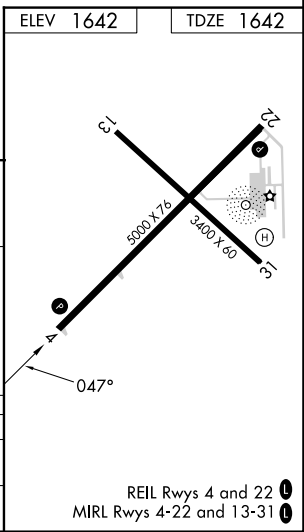
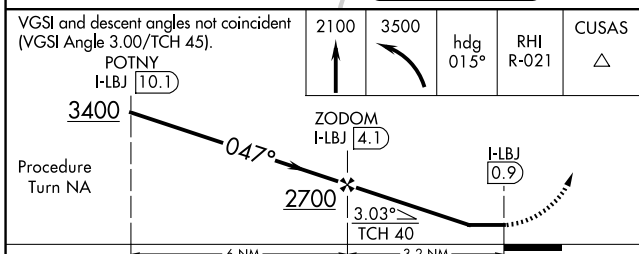
MISSED APPROACH: Climb to 2100 then climbing left turn to 3500 on heading 015° and RHI R-021 to CUSAS/RHI 25 DME and hold.

AWOS-3 118.325	MINNEAPOLIS CENTER 133.65 281.5	UNICOM 122.8 (CTAF)
--------------------------	---	-------------------------------



Procedure NA for arrivals at RHI VOR/DME via V191 southeast bound, V63 southbound.

IAF RHINELANDER 115.05 RHI Chan 97(Y)



CATEGORY	A	B	C	D
S-4	2000-1 358 (400-1)			
CIRCLING	2120-1 478 (500-1)		2260-1 3/4 618 (700-1 3/4)	2340-2 1/4 698 (700-2 1/4)

EC-3, 23 JAN 2025 to 20 FEB 2025

EC-3, 23 JAN 2025 to 20 FEB 2025