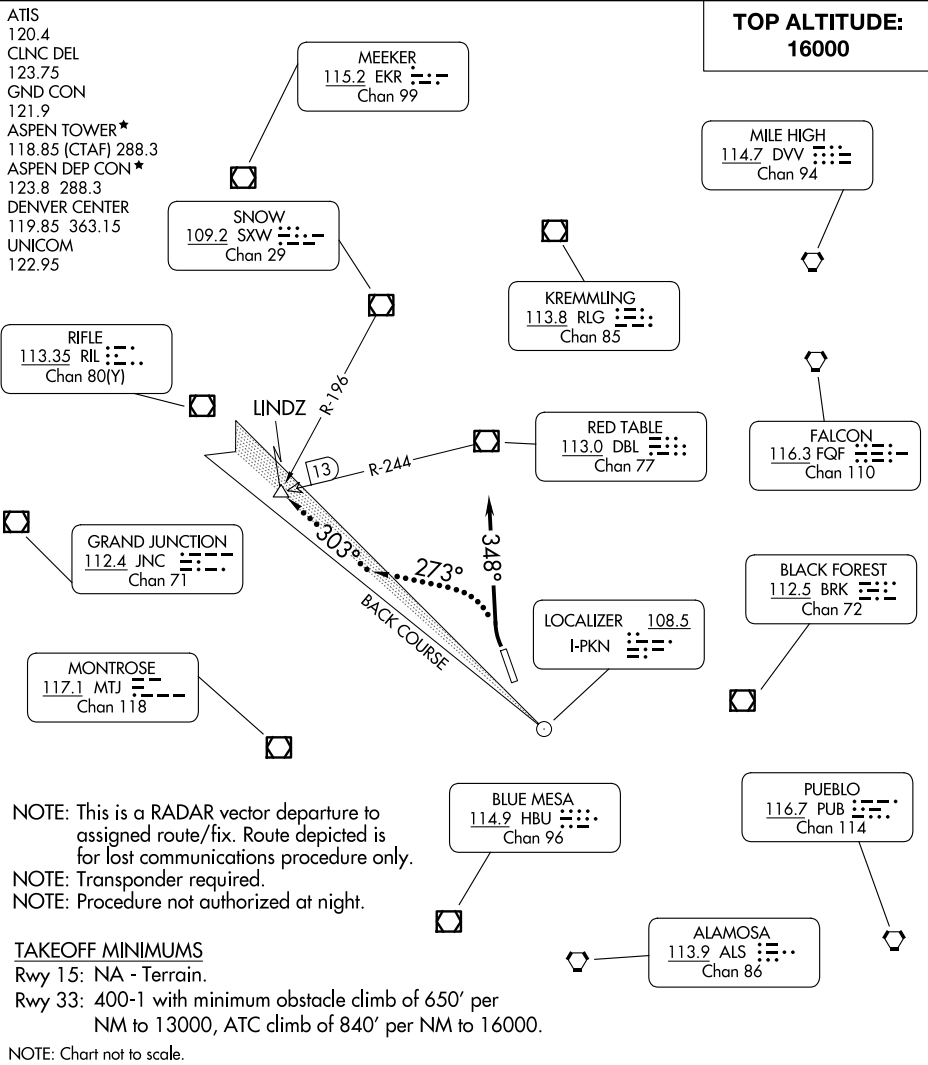


ASPEN SEVEN DEPARTURE

AL-5889 (FAA)

ASPEN-PITKIN COUNTY/SARDY FLD (A5E)
ASPEN, COLORADO



SW-1, 23 JAN 2025 to 20 FEB 2025

SW-1, 23 JAN 2025 to 20 FEB 2025

DEPARTURE ROUTE DESCRIPTION

TAKEOFF RUNWAY 33: Climbing right turn heading 348°, maintain 16000 or assigned altitude for RADAR vectors to assigned route/fix. Expect clearance to filed altitude 10 minutes after departure.

LOST COMMUNICATIONS: If no transmissions are received for one minute after departure, turn left heading 273° to intercept and proceed via the I-PKN NW course (outbound) to LINDZ INT/DBL R-244/13 DME, thence via assigned fix/route.

NOTE: I-PKN back course outbound is normal sensing.

ASPEN SEVEN DEPARTURE