

LINDZ ONE DEPARTURE
(LINDZ1.LINDZ) 16MAY24

ASPEN-PITKIN COUNTY/SARDY FLD (ASE)
ASPEN, COLORADO

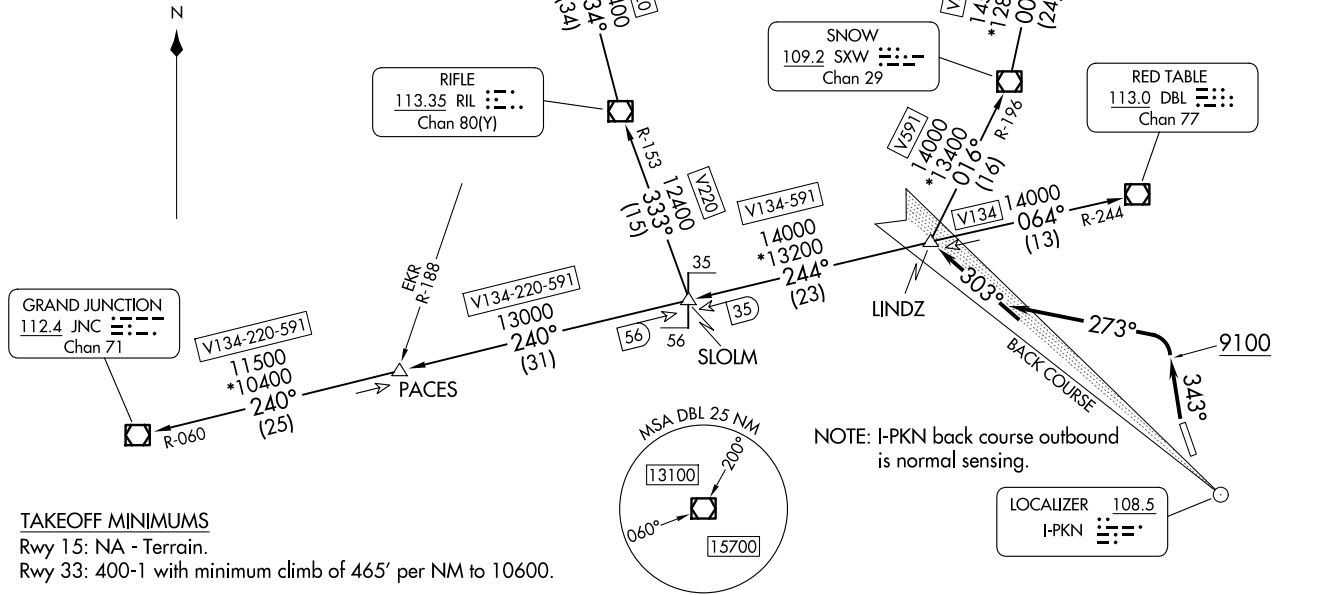
ASPEN DEP CON *
123.8 288.3
DENVER CENTER
119.85 363.15
ATIS
120.4
CLINC DEL
123.75
GND CON
121.9
ASPEN TOWER *
118.85 (CTAF) 288.3
UNICOM
122.95

**TOP ALTITUDE:
16000**

(LINDZ1.LINDZ) 24137
LINDZ ONE DEPARTURE

AL-5889 (FAA)

ASPEN-PITKIN COUNTY/SARDY FLD (ASE)
ASPEN, COLORADO



TAKEOFF MINIMUMS
Rwy 15: NA - Terrain.
Rwy 33: 400-1 with minimum climb of 465' per NM to 10600.

NOTE: Chart not to scale.

(CONTINUED ON FOLLOWING PAGE)



DEPARTURE ROUTE DESCRIPTION

TAKEOFF RUNWAY 33: Climb heading 343° to 9100, then climbing left turn to 16000 on heading 273° to intercept I-PKN NW course outbound to LINDZ INT/DBL 13 DME. Then on assigned transition, maintain 16000, expect clearance to filed altitude 10 minutes after departure.

LOST COMMUNICATIONS: If no transmissions are received for one minute after departure or by DBL VOR/DME 9 DME, turn left on heading 273° to intercept and proceed via the I-PKN NW course (outbound) to LINDZ INT/DBL VOR/DME 13 DME, then via assigned route/transition.

GRAND JUNCTION TRANSITION (LINDZ1.JNC): From over LINDZ on DBL R-244 to SLOLM, then on JNC R-060 to JNC VOR/DME.

KREMMLING TRANSITION (LINDZ1.RLG): From over LINDZ on SXW R-196 to SXW VOR/DME, then on SXW R-001 to JESIE, then on RLG R-260 to RLG VOR/DME.

MEEKER TRANSITION (LINDZ1.EKR): From over LINDZ on DBL R-244 to SLOLM, then on RIL R-153 to RIL VOR/DME, then on RIL R-334 and EKR R-155 to EKR VOR/DME.

RED TABLE TRANSITION (LINDZ1.DBL): From over LINDZ on DBL R-244 to DBL VOR/DME.

RIFLE TRANSITION (LINDZ1.RIL): From over LINDZ on DBL R-244 to SLOLM, then on RIL R-153 to RIL VOR/DME.

SW-1, 23 JAN 2025 to 20 FEB 2025

SW-1, 23 JAN 2025 to 20 FEB 2025