

# POTRR TWO ARRIVAL (RNAV)

AUSTIN, TEXAS

SC-3, 23 JAN 2025 to 20 FEB 2025

RNAV 1 - DME/DME/IRU or GPS
RADAR required

AUSTIN APP CON  
127.225 317.45  
GTU ATIS  
118.6  
HY ATIS \*  
120.825



GEORGETOWN EXEC

TAYLOR MUNI

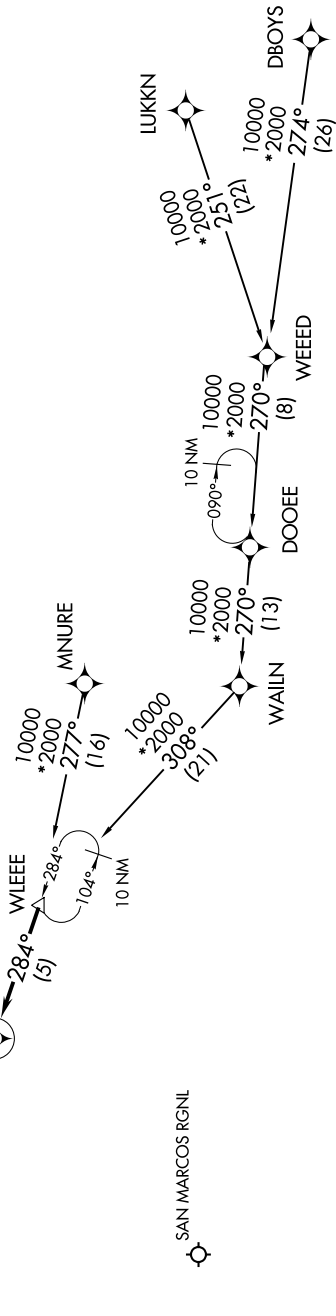
LAGO VISTA TX/RUSTY ALLEN

AUSTIN EXEC

Ldg. 3R9/KGTU/KHYI/  
KRYW/T74/KEDC

POTRR

NOTE: Jets expect to cross WLEEE at 12000.  
NOTE: MNURE Transition for Houston terminal departures only.  
NOTE: Jet and turboprop aircraft only.



NOTE: Chart not to scale.

## ARRIVAL ROUTE DESCRIPTION

- DBOYS TRANSITION (DBOYS.POTRR2)
- LUKKN TRANSITION (LUKKN.POTRR2)
- MNURE TRANSITION (MNURE.POTRR2)
- WEEED TRANSITION (WEEED.POTRR2)

LANDING ALL AIRPORTS: From WLEEE on track 284° to POTRR, then on track 284°. Expect RADAR vectors to final approach course.

# POTRR TWO ARRIVAL (RNAV)

AUSTIN, TEXAS

SC-3, 23 JAN 2025 to 20 FEB 2025