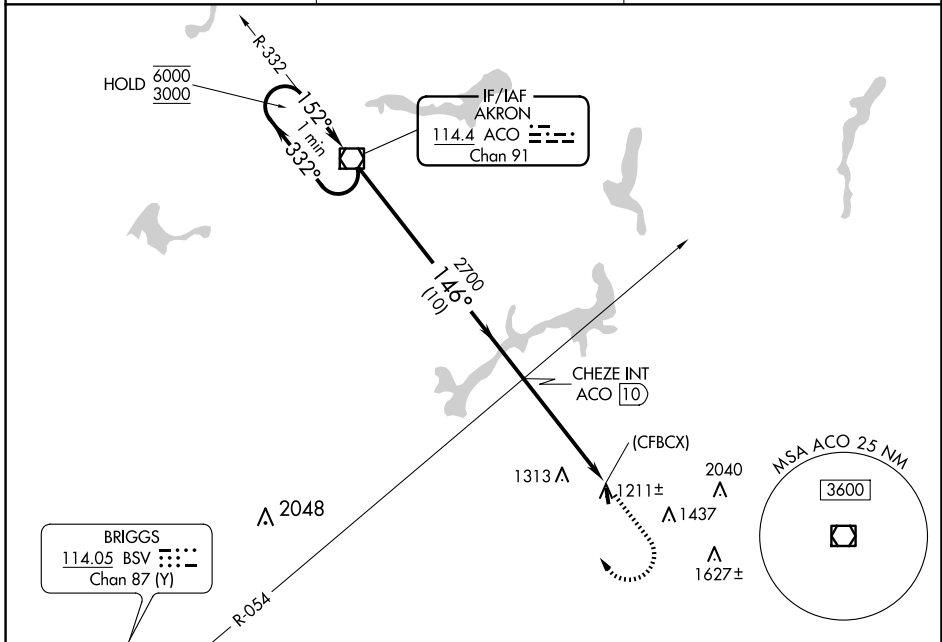


VOR/DME ACO 114.4 Chan 91	APP CRS 146°	Rwy Idg 2768 TDZE 1188 Apt Elev 1188
---	------------------------	---

VOR RWY 18

TRI-CITY (3G6)

<p>▽ Procedure NA at night. Rwy 18 helicopter visibility reduction below 1 SM NA. Use Akron-Canton Rgnl altimeter setting, when not received, use Ravenna altimeter setting.</p> <p>△ NA</p>	<p>MISSED APPROACH: Climb to 3000 then climbing right turn to 3100 direct ACO VOR/DME and hold.</p>	
<p>CAK ASOS 121.05</p>	<p>CLEVELAND APP CON * 125.5 371.875</p>	<p>CTAF 122.9 0</p>



EC-2, 23 JAN 2025 to 20 FEB 2025

EC-2, 23 JAN 2025 to 20 FEB 2025

<p>ELEV 1188 TDZE 1188</p>	
<p>One Minute Holding Pattern</p> <p>ACO VOR/DME</p> <p>6000 ← 332°</p> <p>3000 → 152°</p> <p>CHEZE INT ACO (10)</p> <p>2700</p> <p>2.79° TCH 40</p> <p>(CFBCX)</p>	
<p>3000</p> <p>3100</p> <p>ACO</p>	
<p>10 NM</p> <p>4.8 NM</p> <p>0.2</p>	
CATEGORY	A B C D
S-18	1680-1 492 (500-1) NA
CIRCLING	1680-1 1800-1 NA 492 (500-1) 612 (700-1)
<p>LIRL Rwy 18-36 0</p> <p>FAF to MAP 4.8 NM</p>	
<p>Knots 60 90 120 150 180</p> <p>Min:Sec 4:48 3:12 2:24 1:55 1:36</p>	