

WAAS CH <b>40145</b> <b>W32A</b>	APP CRS <b>315°</b>	Rwy Idg <b>4000</b> TDZE <b>1392</b> Apt Elev <b>1402</b>
--	------------------------	---

# RNAV (GPS) RWY 32

GREENVILLE MUNI (3B1)

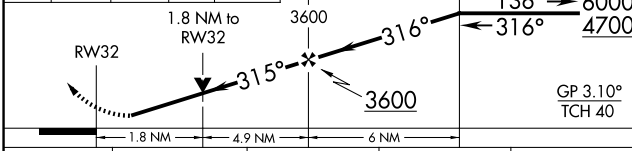
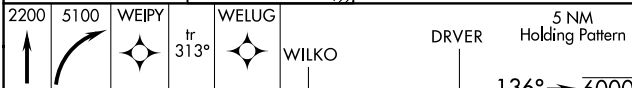
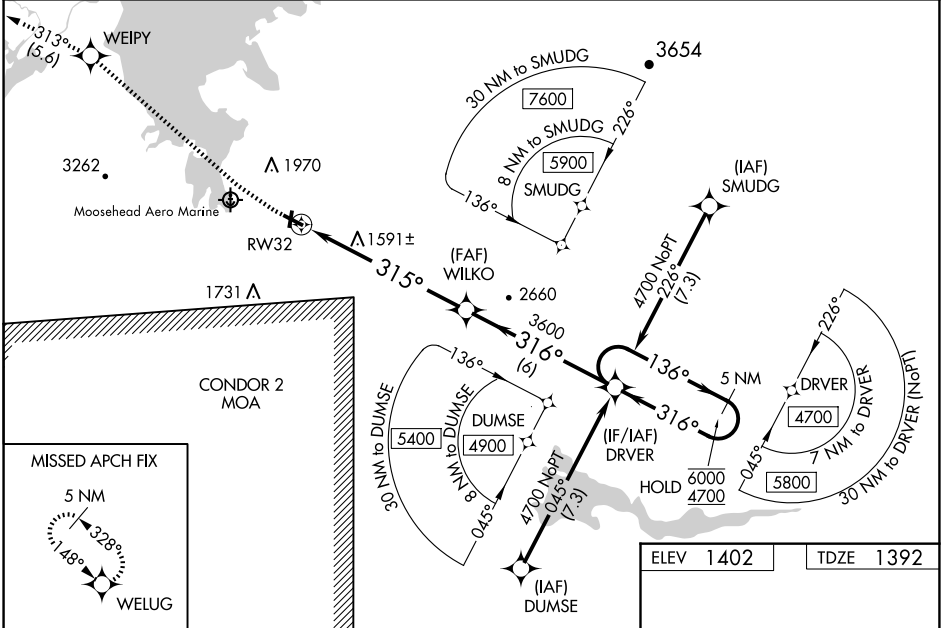
RNP APCH - GPS.

**NA**  
-18°C

Circling Rwy 3, 21 NA at night. Baro-VNAV and VDP NA when using Bangor altimeter setting. Rwy 32 helicopter visibility reduction below 3/4 SM NA. For uncompensated Baro-VNAV systems, LNAV/VNAV NA below -23°C or above 54°C. When local altimeter not received, use Bangor altimeter setting: increase LPV DA to 1927 feet and all visibilities 1/2 SM, increase LNAV/VNAV DA to 2095 feet and all visibilities 3/8 SM; increase all MDAs 300 feet and LNAV visibilities Cat A/B 1/4 SM and Cat C/D 1/2 SM, and Circling visibility Cat A/B 1/4 SM.

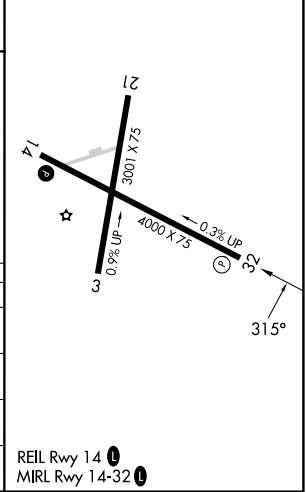
**MISSED APPROACH:** Climb to 2200 then climbing right turn to 5100 direct WEIPY and on track 313° to WELUG and hold, continue climb-in-hold to 5100.

AWOS-A <b>124.175</b>	BOSTON CENTER <b>120.25 346.4</b>	CLNC DEL <b>122.3</b>	UNICOM <b>122.8</b> (CTAF) <b>U</b>
--------------------------	--------------------------------------	--------------------------	--



ELEV 1402	TDZE 1392
-----------	-----------

CATEGORY	A	B	C	D
LPV DA		1642-1	250 (300-1)	
LNAV/VNAV DA		1810-1 1/8	418 (500-1 1/8)	
LNAV MDA	2000-1	608 (600-1)	2000-1 3/4	608 (600-1 3/4)
CIRCLING	2040-1 638 (700-1)	2300-1 1/4 898 (900-1 1/4)	2440-3 1038 (1100-3)	2660-3 1258 (1300-3)



NE-1, 23 JAN 2025 to 20 FEB 2025

NE-1, 23 JAN 2025 to 20 FEB 2025