

WAAS CH 45737 W16A	APP CRS 155°	Rwy Idg 4997 TDZE 82 Apt Elev 83
---------------------------------	------------------------	---

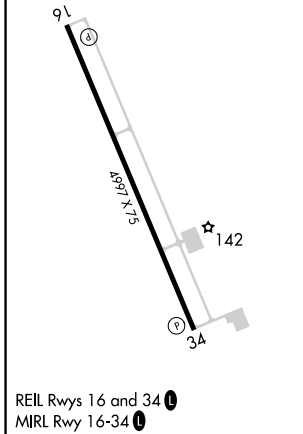
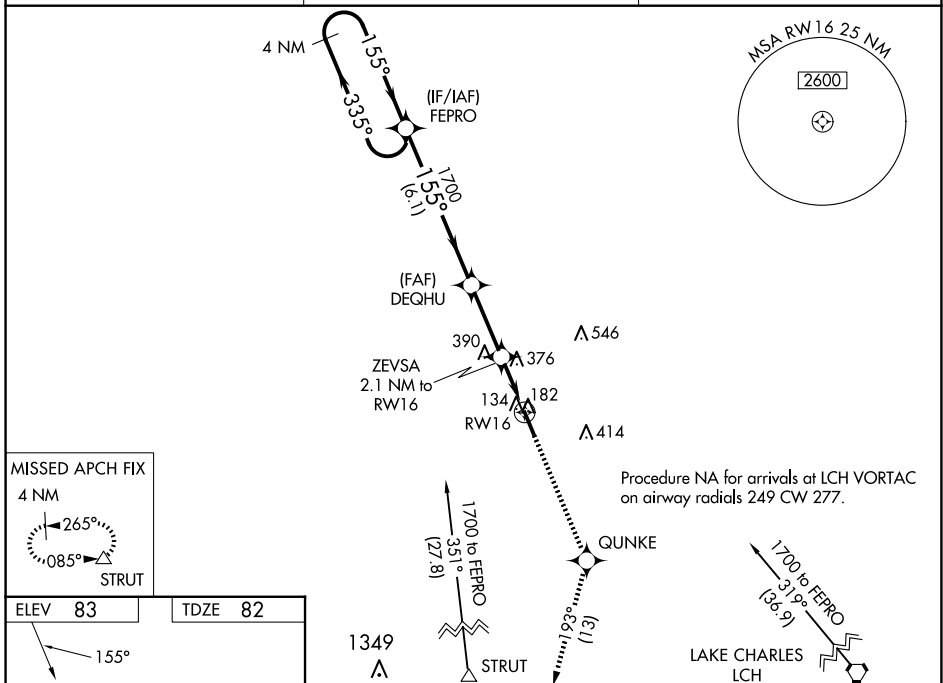
RNAV (GPS) RWY 16

DE QUINCY INDUSTRIAL AIRPARK (5R8)

▼ Baro-VNAV NA when using Sulphur altimeter setting. DME/DME RNP-0.3 NA.
▲ NA When local altimeter setting not received, use Sulphur altimeter setting and increase all DA 55 feet and MDA 60 feet, increase LPV visibility all Cats ¼, LNAV/VNAV all Cats ¼ and LNAV and Circling Cat C visibility ¼ mile. For uncompensated Baro-VNAV systems, LNAV/VNAV NA below -15°C (5°F) or above 54°C (130°F). Helicopter visibility reduction below 1 SM NA. Night landing: Rwy 16 NA.

MISSED APPROACH: Climb to 2000 direct QUNKE and on track 193° to STRUT and hold.

AWOS-3PT 121.2	LAKE CHARLES APP CON * 119.35 282.3	UNICOM 122.8 (CTAF) 0
--------------------------	---	---------------------------------



4 NM Holding Pattern	FEPRO	DEQHU	2000	QUNKE	STRUT
		1700	↑	tr 193°	△
1700 ← 335°	155° →	1700			
GP 3.00° TCH 50				ZEVSA 2.1 NM to RW16	*LNAV only
				*800	
	6.1 NM	2.8 NM		2.1 NM	
CATEGORY	A	B	C	D	
LPV DA		365-1	283 (300-1)		NA
LNAV/VNAV DA		799-2½	717 (800-2½)		NA
LNAV MDA	700-1	618 (700-1)	700-1¾ 618 (700-1¾)		NA
C CIRCLING	700-1 617 (700-1)	740-1 657 (700-1)	740-1¾ 657 (700-1¾)		NA

SC-4, 23 JAN 2025 to 20 FEB 2025

SC-4, 23 JAN 2025 to 20 FEB 2025