

GUTHRIE, OKLAHOMA

AL-5950 (FAA)

24305

WAAS CH 56607 W34A	APP CRS 338°	Rwy Idg TDZE Apt Elev	5001 1069 1069
--	------------------------	-----------------------------	---

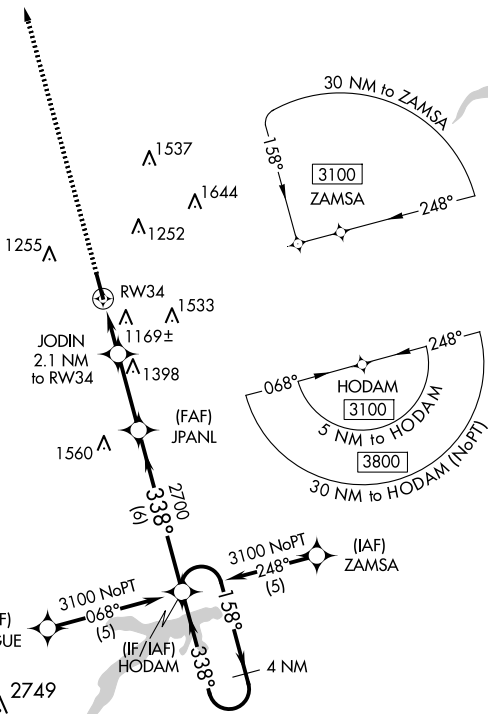
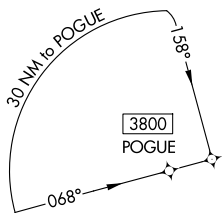
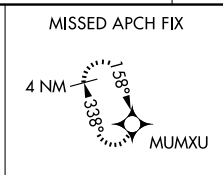
RNAV (GPS) RWY 34

GUTHRIE/EDMOND RGNL (GOK)

⚠ DME/DME RNP-0.3 NA. VDP NA when using OKC Will Rogers Intl altimeter setting.
⚠ When local altimeter setting not received, use OKC Will Rogers Intl altimeter setting and increase DA/MDA 100 feet and LPV all Cats visibility 1/4 mile.

MISSED APPROACH: Climb to 3100 direct MUMXU and hold.

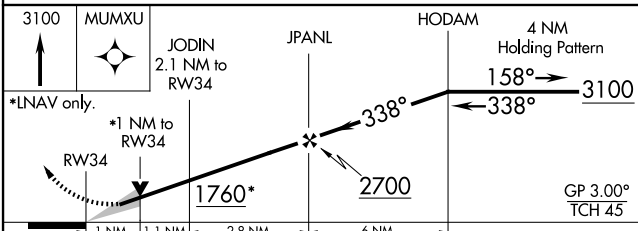
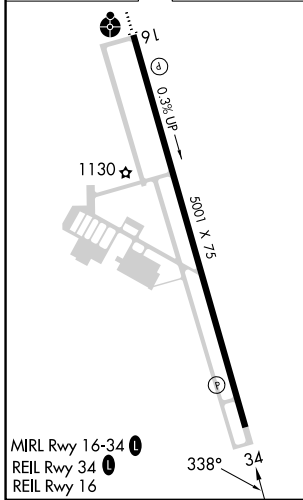
ASOS 133.975	OKE CITY APP CON 124.2 336.4	UNICOM 122.8 (CTAF) 📻
------------------------	--	--



SC-1, 23 JAN 2025 to 20 FEB 2025

SC-1, 23 JAN 2025 to 20 FEB 2025

ELEV 1069	TDZE 1069
-----------	-----------



CATEGORY	A	B	C	D
LPV DA	1319-1	250 (300-1)		NA
LNAV MDA	1420-1	351 (400-1)		NA
CIRCLING	1540-1 471 (500-1)	1560-1 491 (500-1)		NA

GUTHRIE, OKLAHOMA
Amdt 1A 16JUN22

35°51'N-97°25'W

GUTHRIE/EDMOND RGNL (GOK) RNAV (GPS) RWY 34