

WAAS CH 69234 W05A	APP CRS 050°	Rwy Idg 5000 TDZE 17 Apt Elev 18
--	------------------------	---

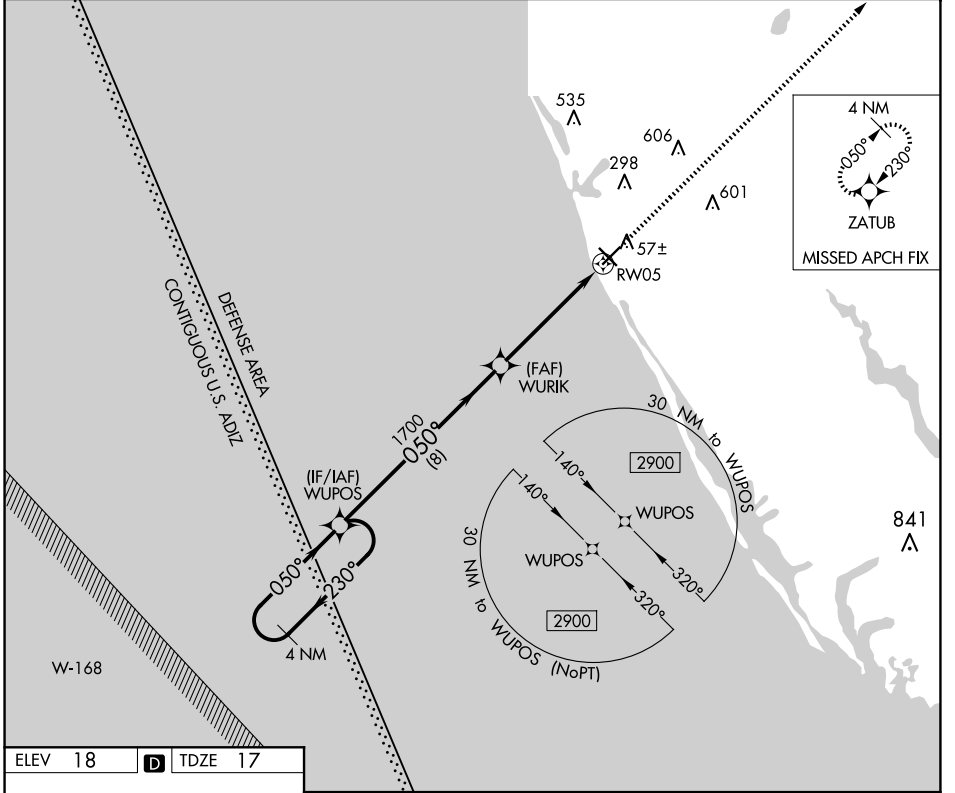
RNAV (GPS) RWY 5

VENICE MUNI (VNC)

⚠ When local altimeter setting not received, use Sarasota altimeter setting and increase all MDA 60 feet, increase LNAV Cat C, D visibility $\frac{1}{8}$ mile, and Circling Cat C visibility $\frac{1}{4}$ mile. DME/DME RNP-0.3 NA.
⚠ Helicopter visibility reduction below $\frac{3}{4}$ SM NA.

MISSED APPROACH: Climb to 2900 direct ZATUB and hold.

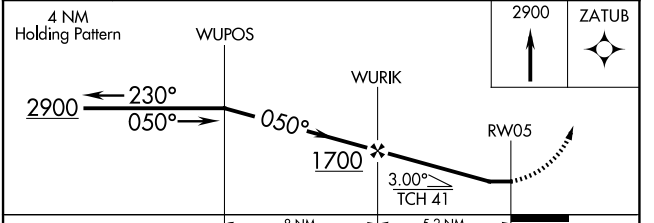
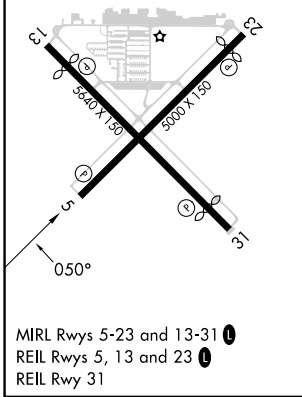
AWOS-3 119.275	TAMPA APP CON 119.65 353.575	CLNC DEL 118.075	UNICOM 122.725 (CTAF)
--------------------------	--	----------------------------	---------------------------------



SE-3, 23 JAN 2025 to 20 FEB 2025

SE-3, 23 JAN 2025 to 20 FEB 2025

ELEV 18	D	TDZE 17
---------	----------	---------



CATEGORY	A	B	C	D
LP MDA	460-1	443 (500-1)	460- $\frac{1}{8}$	443 (500- $\frac{1}{8}$)
LNAV MDA	480-1	463 (500-1)	480- $\frac{1}{8}$	463 (500- $\frac{1}{8}$)
C CIRCLING	500-1	482 (500-1)	700-2 682 (700-2)	920-3 902 (1000-3)