

VOR/DME IDA 113.85 Chan 85(Y)	APP CRS 016°	Rwy Idg TDZE Apt Elev	3900 4862 4862
--	------------------------	-----------------------------	---

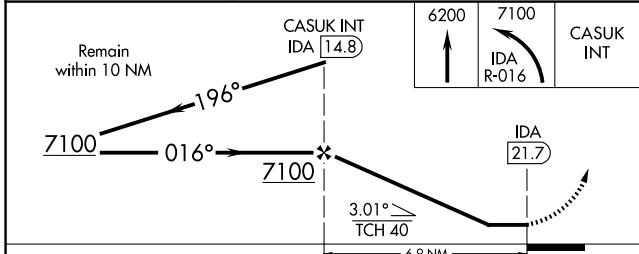
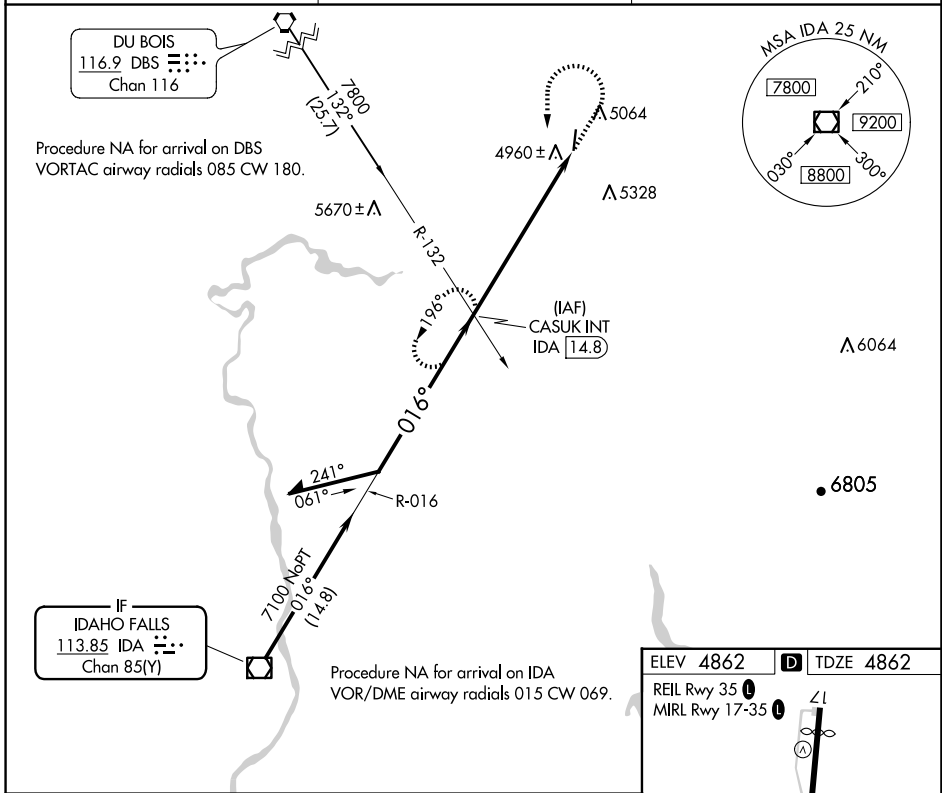
VOR RWY 35

REXBURG-MADISON COUNTY (R.X.E)

▼ Rwy 35 helicopter visibility reduction below 1 SM NA.
▲ Straight-in Rwy 35 NA at night, Circling Rwy 35 NA at night.

MISSED APPROACH: Climb to 6200 then climbing left turn to 7100 on IDA R-016 to CASUK INT/IDA 14.8 DME and hold.

ASOS 135.075	SALT LAKE CENTER 128.35 239.25	UNICOM 122.8 (CTAF) 📻
------------------------	--	--



ELEV 4862	TDZE 4862
REIL Rwy 35	MIRL Rwy 17-35

Runway 35: 4200 x 75

Altitudes: 4890 Δ, 4890 Δ, 4890 Δ, 4890 Δ

Distance: 35, 016° 6.9 NM from FAF

FAF to MAP 6.9 NM
Knots: 60, 90, 120, 150, 180
Min:Sec: 6:54, 4:36, 3:27, 2:46, 2:18

CATEGORY	A	B	C	D
S-35	5680-1 818 (900-1)	5680-1¼ 818 (900-1¼)	5680-2½ 818 (900-2½)	5760-3 898 (900-3)
📻 CIRCLING	5680-1¼ 818 (900-1¼)			

NW-1, 23 JAN 2025 to 20 FEB 2025

NW-1, 23 JAN 2025 to 20 FEB 2025