

LOC/DME F-HDN 109.9 Chan 36	APP CRS 104°	Rwy Idg TDZE Apt Elev 9490 6591 6606
---	------------------------	--

ILS or LOC RWY 10

YAMPA VALLEY (HDN)

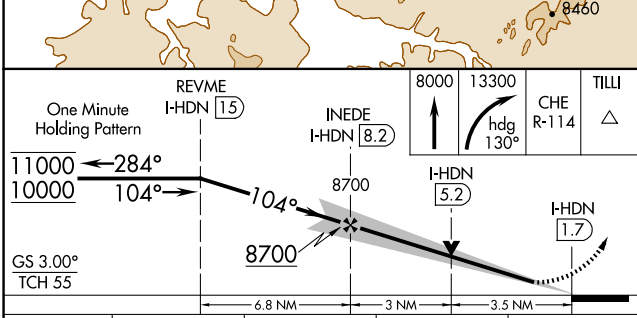
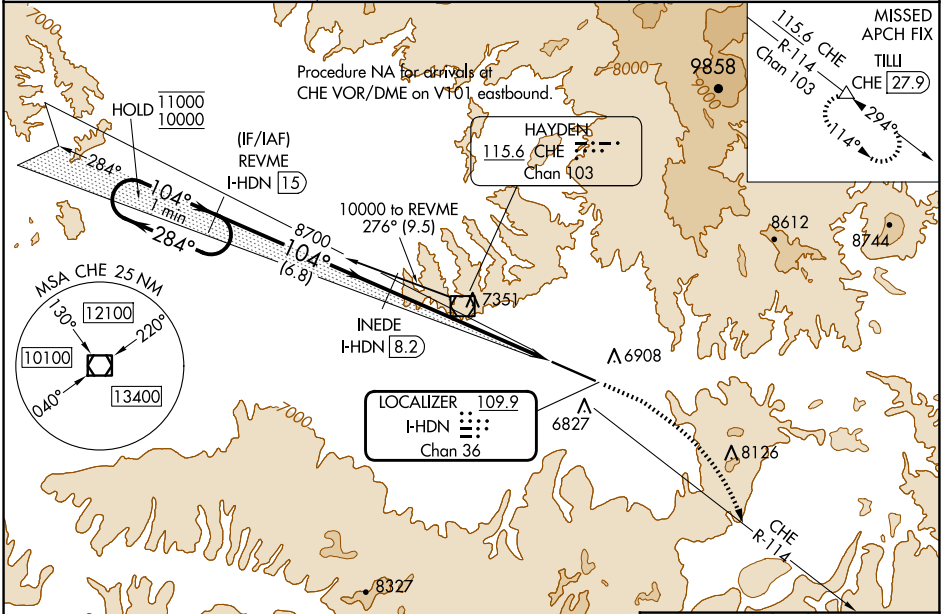
DME required.

NA Inop table does not apply to S-ILS 10* all Cats and S-LOC 10 Cats C/D. For inop ALS, increase S-ILS 10 all Cats visibility to 2½ SM.

MALSF

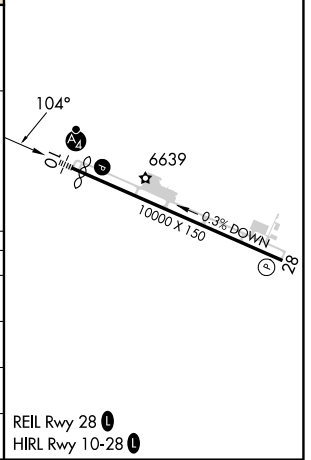
MISSED APPROACH: Climb to 8000 then climbing right turn to 13300 on heading 130° and on CHE VOR/DME R-114 to TILLI/CHE 27.9 DME and hold, continue climb-in-hold to 13300.
*Missed approach requires minimum climb of 307 feet per NM to 8700.

AWOS-3PT 119.275	DENVER CENTER 120.475 235.975	UNICOM 123.0 (CTAF)
----------------------------	---	-------------------------------



ELEV 6606	TDZE 6591
-----------	-----------

CATEGORY	A	B	C	D
S-ILS 10*	6791-¾ 200 (200-¾)			
S-ILS 10	7414-2 823 (900-2)			
S-LOC 10	7760-1 1169 (1200-1)	7760-1½ 1169 (1200-1½)	7760-3 1169 (1200-3)	
CIRCLING	7760-1½ 1154 (1200-1½)	7760-1½ 1154 (1200-1½)	7900-3 1294 (1300-3)	8200-3 1594 (1600-3)



SW-1, 23 JAN 2025 to 20 FEB 2025

SW-1, 23 JAN 2025 to 20 FEB 2025