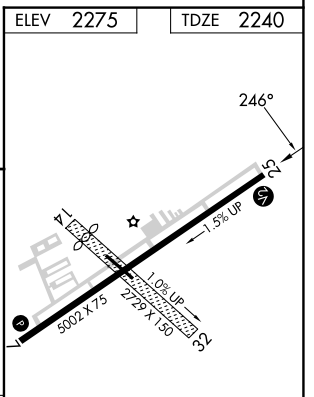
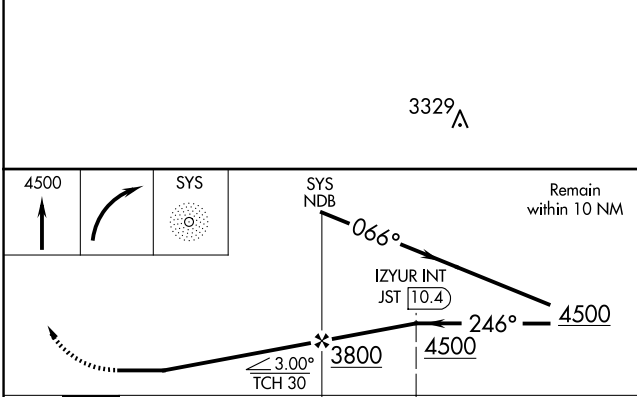
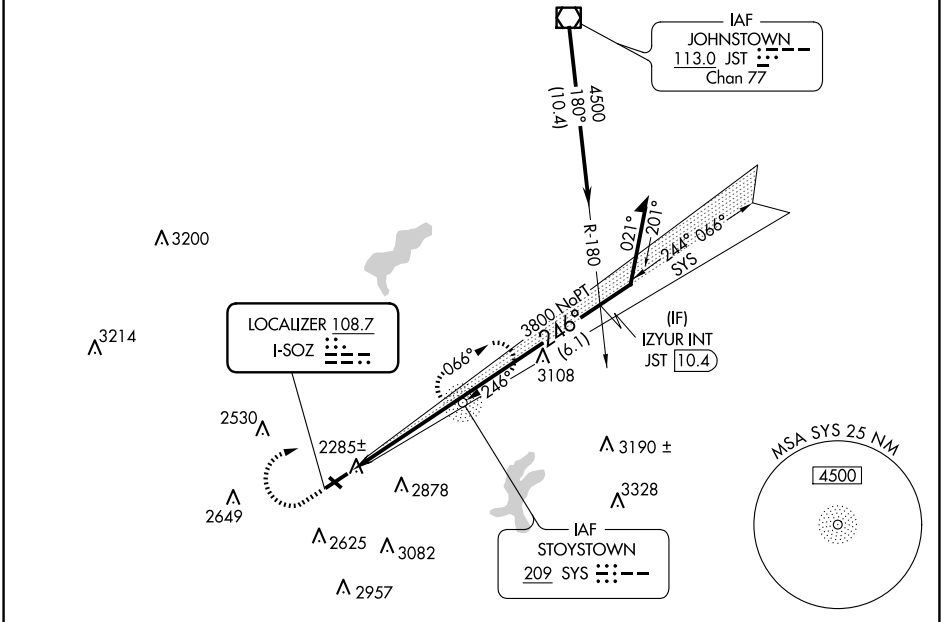


LOC I-SOZ 108.7	APP CRS 246°	Rwy Idg TDZE Apt Elev	5002 2240 2275
---------------------------	------------------------	-----------------------------	---

LOC RWY 25

SOMERSET COUNTY (2G9)

ADF required.		MISSED APPROACH: Climb to 4500 then right turn direct SYS NDB and hold.
<p>▼ Procedure NA at night. Rwy 25 helicopter visibility reduction below 1 SM NA.</p> <p>▲ Circling NA to Rwy 14 and 32.</p>		
AWOS-3P 133.8	JOHNSTOWN APP CON ★ 121.2 299.2	UNICOM 122.8 (CTAF) 0



CATEGORY	A	B	C	D
S-25	2700-1	460 (500-1)	2700-1 ³ / ₈ 460 (500-1 ³ / ₈)	2700-1 ¹ / ₂ 460 (500-1 ¹ / ₂)
CIRCLING	2820-1 545 (600-1)	2920-1 645 (700-1)	3520-3	1245 (1300-3)

ELEV	2275	TDZE	2240
MIRL Rwy 7-25			
REIL Rwys 7 and 25 0			
FAF to MAP 4.9 NM			
Knots	60	90	120 150 180
Min:Sec	4:54	3:16	2:27 1:58 1:38

NE-4, 23 JAN 2025 to 20 FEB 2025

NE-4, 23 JAN 2025 to 20 FEB 2025