

WAAS CH <b>69301</b> <b>W36A</b>	APP CRS <b>003°</b>	Rwy Idg <b>4701</b> TDZE <b>2309</b> Apt Elev <b>2313</b>
----------------------------------------	------------------------	-----------------------------------------------------------------

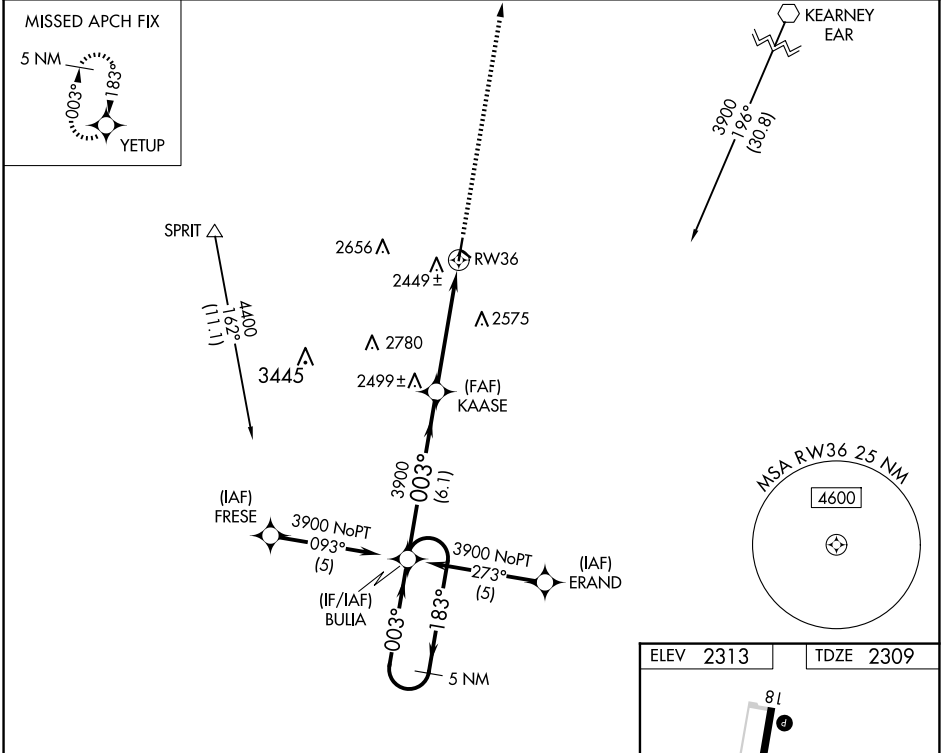
# RNAV (GPS) RWY 36

BREWSTER FLD (HDE)

**▼** DME/DME RNP-0.3 NA. When local altimeter setting not received, use Kearney altimeter setting and increase DA to 2639 feet and all MDAs 80 feet, and increase Circling Cats C/D visibility ¼ SM. VDP NA when using Kearney altimeter setting.

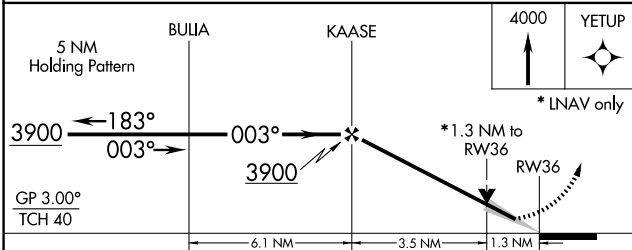
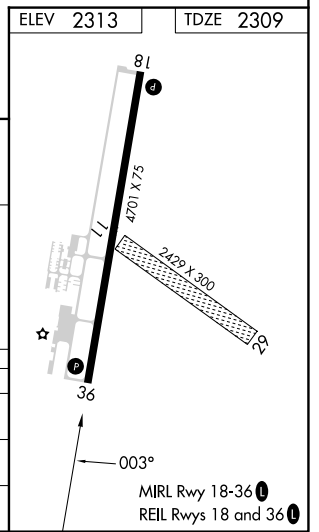
**▲** MISSED APPROACH: Climb to 4000 direct YETUP and hold.

AWOS-3 <b>121.325</b>	DENVER CENTER <b>132.7 226.675</b>	UNICOM <b>122.8 (CTAF)</b>
--------------------------	---------------------------------------	-------------------------------



NC-2, 23 JAN 2025 to 20 FEB 2025

NC-2, 23 JAN 2025 to 20 FEB 2025



CATEGORY	A	B	C	D
LPV DA	2559-1 250 (300-1)			
LNAV MDA	2760-1 451 (500-1)	2760-1½ 451 (500-1½)	2760-1½ 451 (500-1½)	2760-1½ 451 (500-1½)
CIRCLING	2840-1 527 (600-1)	3020-2 707 (800-2)	3020-2½ 707 (800-2½)	3020-2½ 707 (800-2½)