

VOR EAR <b>111.2</b>	APP CRS <b>217°</b>	Rwy Idg TDZE Apt Elev	<b>N/A</b> <b>N/A</b> <b>2313</b>
-------------------------	------------------------	-----------------------------	---

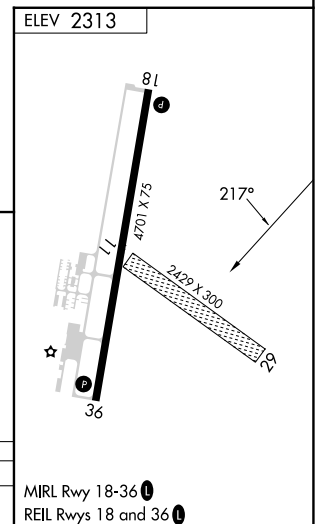
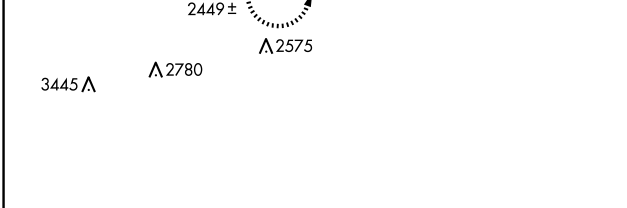
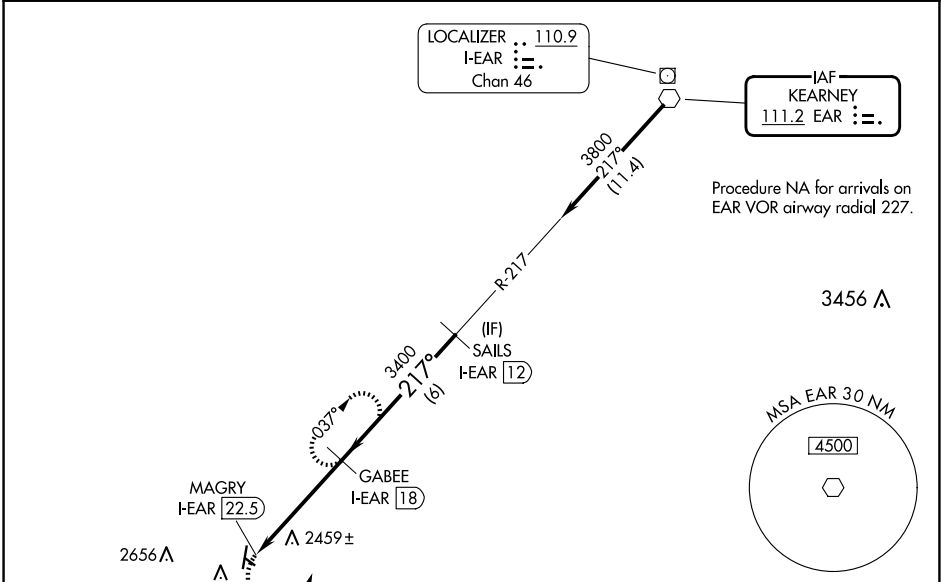
**VOR-A**  
BREWSTER FLD (HDE)

DME required.

**▽** DME from I-EAR localizer.  
**▲** Simultaneous reception of EAR VOR and I-EAR DME required.  
 When local altimeter setting not received, use Kearney altimeter setting and increase all MDA 80 feet and increase all visibilities ¼ SM.

MISSED APPROACH: Climbing left turn to 3900 on EAR VOR R-217 to GABEE/I-EAR 18 DME and hold.

AWOS-3 <b>121.325</b>	DENVER CENTER <b>132.7 226.675</b>	UNICOM <b>122.8 (CTAF) 0</b>
--------------------------	---------------------------------------	---------------------------------



3900 EAR R-217	GABEE I-EAR 18	GABEE I-EAR 18	SAILS I-EAR 12	
MAGRY I-EAR 22.5	3400	3800		
4.6 NM		6 NM		
CATEGORY	A	B	C	D
<b>C</b> CIRCLING	3100-1 787 (800-1)	3100-1¼ 787 (800-1¼)	3100-2¼ 787 (800-2¼)	3100-2½ 787 (800-2½)

MIRL Rwy 18-36 **0**  
REIL Rwys 18 and 36 **0**

NC-2, 23 JAN 2025 to 20 FEB 2025

NC-2, 23 JAN 2025 to 20 FEB 2025