

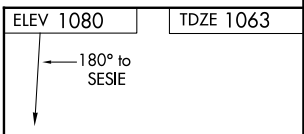
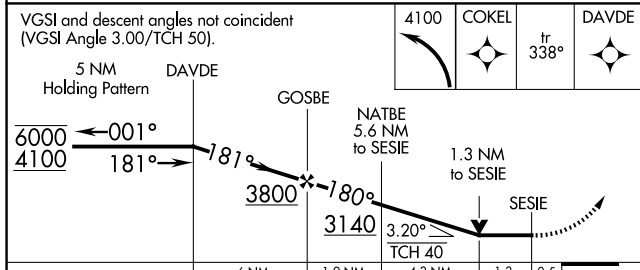
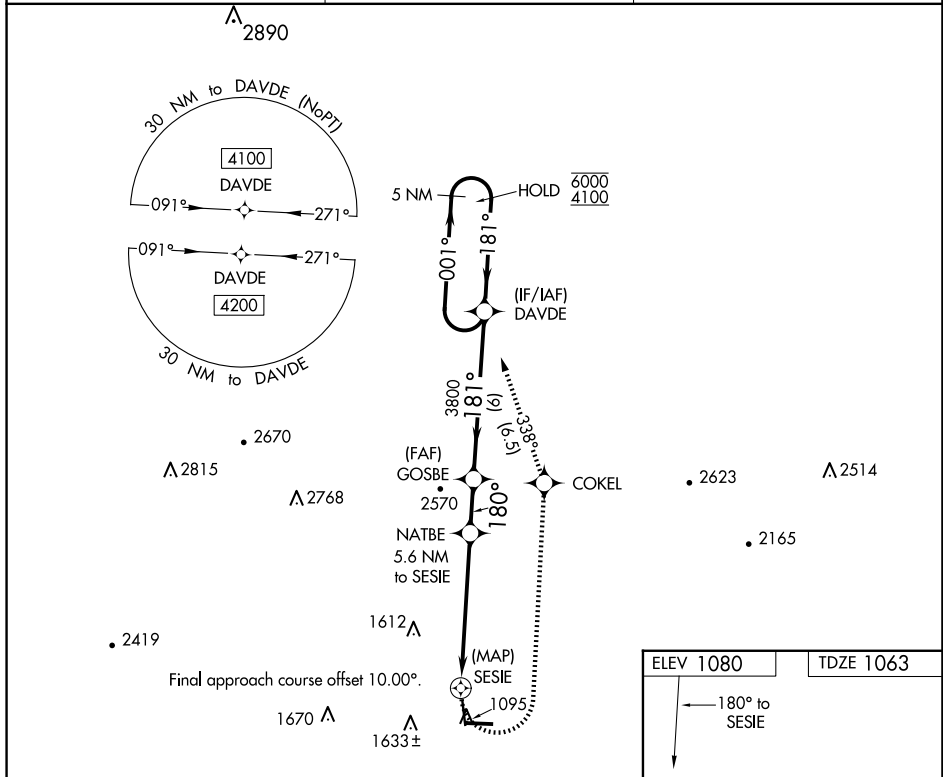
APP CRS <b>180°</b>	Rwy Idg TDZE Apt Elev	<b>5001</b> <b>1063</b> <b>1080</b>
------------------------	-----------------------------	---

# RNAV (GPS) RWY 17

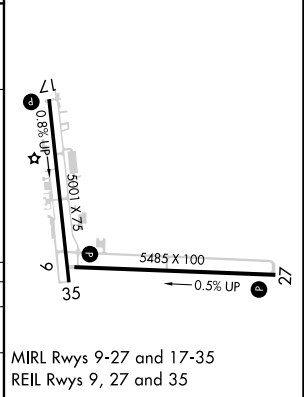
MENA INTERMOUNTAIN MUNI (MEZ)

RNP APCH.  
 ▼ Circling Rwy 35 NA at night.  
 ▲ Rwy 17 helicopter visibility reduction below ¾ SM NA.  
 MISSED APPROACH: Climbing left turn to 4100 direct COKEI and track 338° to DAVDE and hold.

AWOS-3 <b>118.025</b>	MEMPHIS CENTER <b>126.1 269.0</b>	UNICOM <b>122.8 (CTAF)</b>
--------------------------	--------------------------------------	-------------------------------



CATEGORY	A	B	C	D
LNVA MDA	1660-1	597 (600-1)	1660-1¼ 597 (600-1¼)	NA
CIRCLING	1840-1 760 (800-1)	2140-1½ 1060 (1100-1½)	2220-3 1140 (1200-3)	NA



SC-1, 23 JAN 2025 to 20 FEB 2025

SC-1, 23 JAN 2025 to 20 FEB 2025