

WAAS CH <b>82739</b> <b>W04A</b>	APP CRS <b>047°</b>	Rwy Idg TDZE Apt Elev	<b>5506</b> <b>797</b> <b>800</b>
--	------------------------	-----------------------------	---

# RNAV (GPS) RWY 4

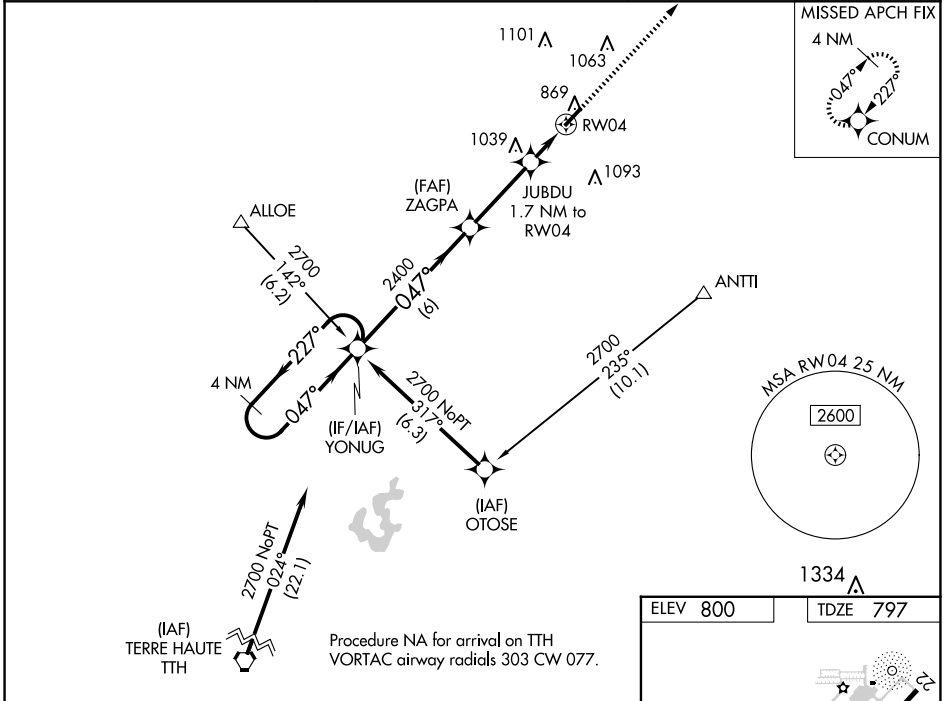
CRAWFORDSVILLE RGNL (CFJ)

RNP APCH.

Baro-VNAV NA when using Greencastle altimeter setting. For uncompensated Baro-VNAV systems, LNAV/VNAV NA below -16°C or above 54°C. When local altimeter setting not received, use Greencastle altimeter setting: increase LPV DA to 1128 feet and all visibilities ¼ SM, LNAV/VNAV DA to 1118 feet and all visibilities ¼ SM; increase all MDA 60 feet and Circling Cats C and D visibilities ¼ SM. Rwy 4 helicopter visibility reduction below ¾ SM NA.

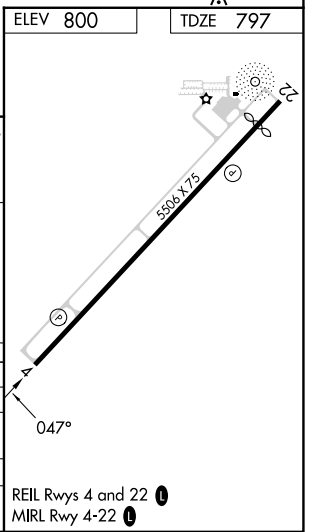
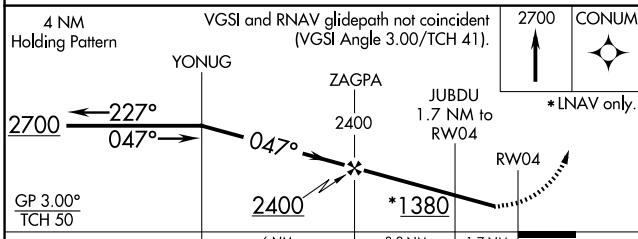
MISSED APPROACH:  
Climb to 2700 direct CONUM and hold.

AWOS-3PT <b>125.65</b>	INDIANAPOLIS APP CON <b>119.05 317.8</b>	UNICOM <b>122.8 (CTAF)</b>
---------------------------	---	-------------------------------



EC-2, 23 JAN 2025 to 20 FEB 2025

EC-2, 23 JAN 2025 to 20 FEB 2025



CATEGORY	A	B	C	D
LPV DA		1076-7/8	279 (300-7/8)	
LNAV/VNAV DA		1066-7/8	269 (300-7/8)	
LNAV MDA	1240-1	443 (500-1)	1240-1 3/8	443 (500-1 3/8)
<b>C</b> CIRCLING	1240-1 440 (500-1)	1260-1 460 (500-1)	1440-1 3/4 640 (700-1 3/4)	1520-2 1/4 720 (800-2 1/4)