

WAAS CH <b>60907</b> <b>W35A</b>	APP CRS <b>348°</b>	Rwy ldg <b>5503</b> TDZE <b>1140</b> Apt Elev <b>1165</b>
--	------------------------	---

# RNAV (GPS) RWY 35

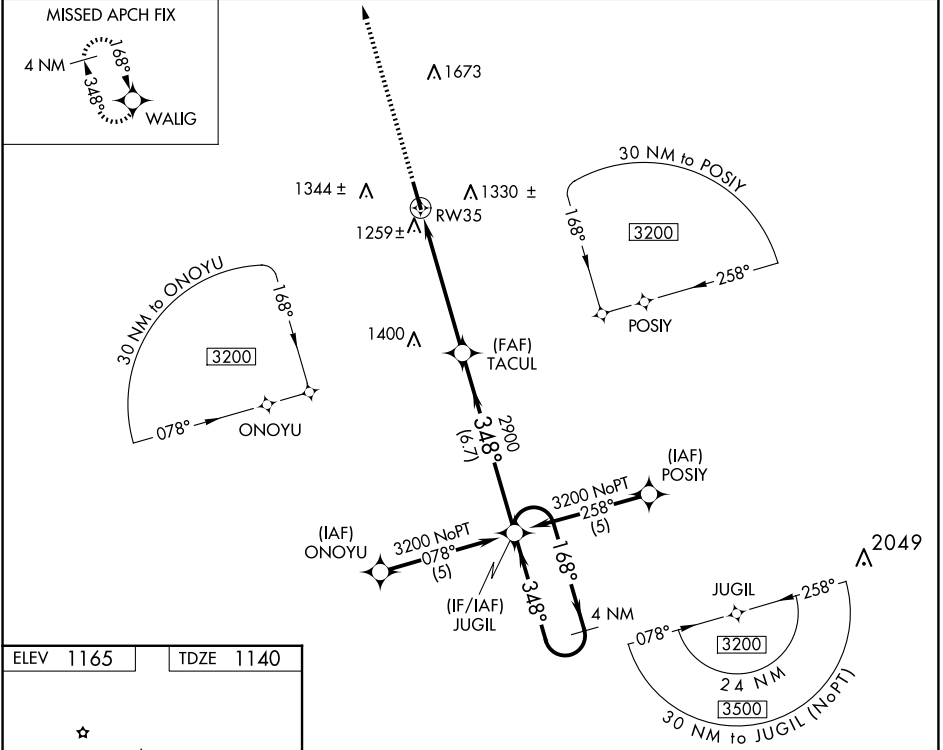
WEST GEORGIA RGNL/O V GRAY FLD (CTJ)

RNP APCH-GPS.

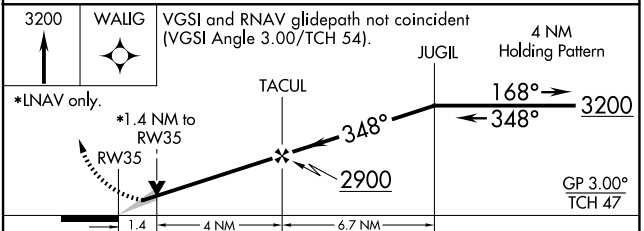
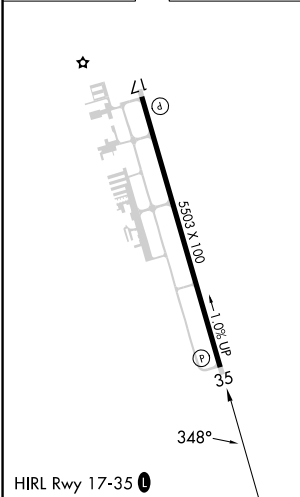
▼ When local altimeter setting not received, use Newnan Coweta County altimeter setting and increase DA to 1480 feet and all visibilities ¼ SM; increase all MDAs 100 feet and visibility Cat C ½ SM and Cat D ¼ SM. VDP NA when using Newnan Coweta County altimeter setting.

MISSED APPROACH:  
Climb to 3200 direct  
WALIG and hold.

AWOS-3 <b>118.175</b>	ATLANTA APP CON <b>121.0 268.7</b>	CLNC DEL <b>121.6</b>	UNICOM <b>122.975 (CTAF) 0</b>
--------------------------	---------------------------------------	--------------------------	-----------------------------------



ELEV 1165	TDZE 1140
-----------	-----------



CATEGORY	A	B	C	D
LPV DA	1390-1 250 (300-1)			
LNAV/VNAV DA	NA			
LNAV MDA	1580-1	440 (500-1)	1580-1¼ 440 (500-1¼)	1580-1½ 440 (500-1½)
CIRCLING	1660-1 495 (500-1)	1700-1 535 (600-1)	1880-2 715 (800-2)	2000-2¾ 835 (900-2¾)

SE-4, 23 JAN 2025 to 20 FEB 2025

SE-4, 23 JAN 2025 to 20 FEB 2025