

APP CRS <b>323°</b>	Rwy Idg <b>3641</b>
	TDZE <b>1286</b>
	Apt Elev <b>1288</b>

# RNAV (GPS) RWY 32

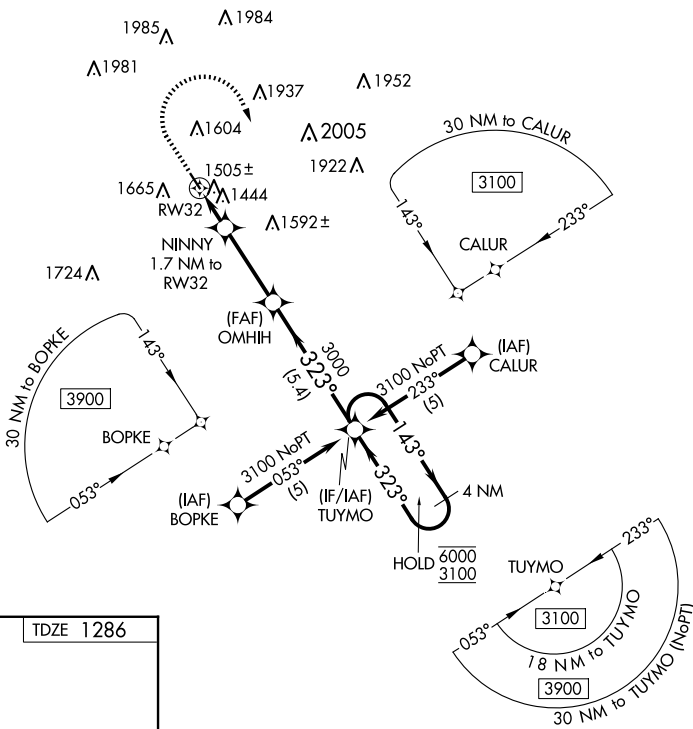
AUDUBON COUNTY (ADU)

RNP APCH - GPS.

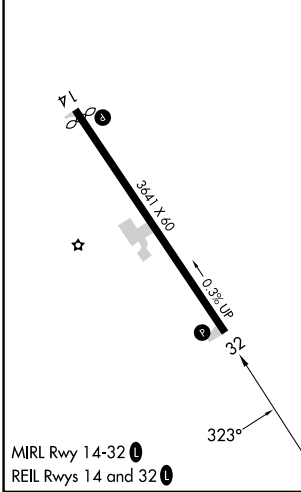
▼ When local altimeter setting not received, procedure NA.  
Rwy 32 helicopter visibility reduction below 3/4 SM NA.  
Circling Rwy 14 NA at night.

MISSED APPROACH: Climb to 2500 then climbing right turn to 3100 direct TUYMO and hold.

AWOS-3 <b>118.075</b>	MINNEAPOLIS CENTER <b>119.6 290.4</b>	UNICOM <b>122.8 (CTAF) ①</b>
--------------------------	--	---------------------------------



ELEV 1288	TDZE 1286
-----------	-----------



2500	3100	TUYMO	TUYMO
↑	↷	✧	✧
NINNY 1.7 NM to RW32		OMHIH	4 NM Holding Pattern
RW32		3000	6000 / 3100
1.7 NM		3.2 NM	5.4 NM
CATEGORY	A	B	C
LNAV MDA	1760-1	474 (500-1)	NA
CIRCLING	1980-1	692 (700-1)	NA

NC-3, 23 JAN 2025 to 20 FEB 2025

NC-3, 23 JAN 2025 to 20 FEB 2025