

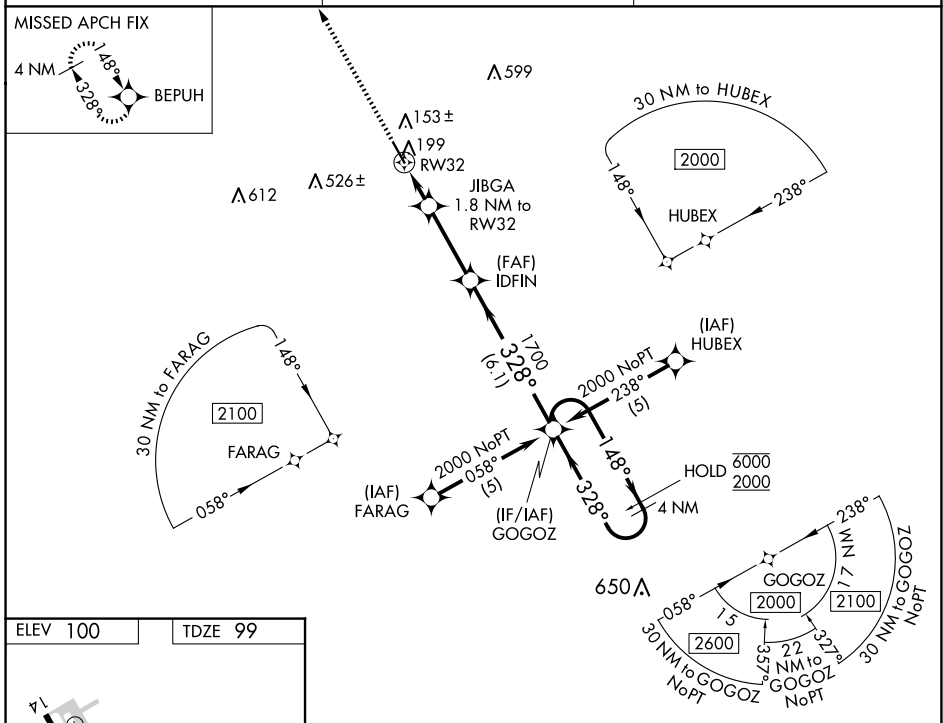
WAAS CH 58114 W32A	APP CRS 328°	Rwy Idg TDZE Apt Elev	5004 99 100
----------------------------------------	------------------------	-----------------------------	----------------------------------------

RNAV (GPS) RWY 32

WHARTON RGNL (A.R.M)

RNP APCH.	MISSED APPROACH: Climb to 2000 direct BEPUH and hold.
For uncompensated Baro-VNAV systems, LNAV/VNAV NA below -15°C or above 54°C.	

AWOS-3 118.475	HOUSTON CENTER 128.6 360.8	UNICOM 122.7 (CTAF)
--------------------------	--------------------------------------	-------------------------------



2000 BEPUH *LNAV only RW32 1 NM 0.8 3 NM 6.1 NM	IDFIN 1700 700* 1700		GOGOZ 4 NM Holding Pattern 148° → 6000 ← 328° 2000 GP 3.00° TCH 42	
	JIBGA 1.8 NM to RW32 *1 NM to RW32	FARAG (IAF) GOGOZ (IF/IAF) IDFIN (FAF) HUBEX (IAF)	FARAG (IAF) GOGOZ (IF/IAF) IDFIN (FAF) HUBEX (IAF)	FARAG (IAF) GOGOZ (IF/IAF) IDFIN (FAF) HUBEX (IAF)
CATEGORY	A	B	C	D
LPV DA	349-1	250 (300-1)		NA
LNAV/VNAV DA	399-1	300 (300-1)		NA
LNAV MDA	460-1	361 (400-1)		NA

SC-5, 23 JAN 2025 to 20 FEB 2025

SC-5, 23 JAN 2025 to 20 FEB 2025