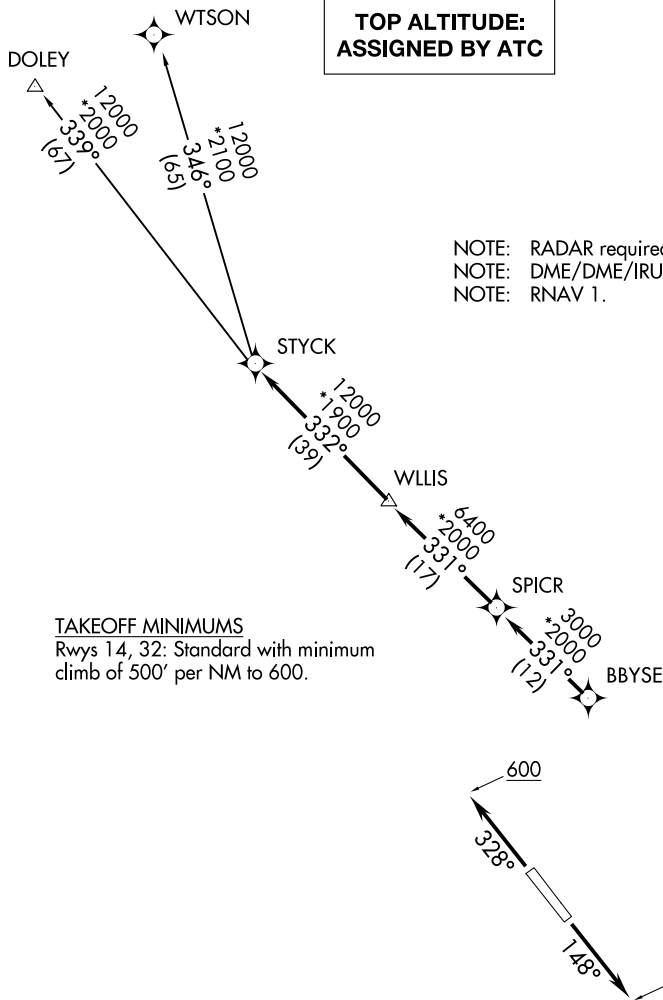


# STYCK EIGHT DEPARTURE (RNAV)

WHARTON, TEXAS

**TOP ALTITUDE:  
ASSIGNED BY ATC**

AWOS-3  
118.475  
CTAF  
122.7  
HOUSTON DEP CON  
128.6 360.85



NOTE: RADAR required.  
NOTE: DME/DME/IRU or GPS required.  
NOTE: RNAV 1.

**TAKEOFF MINIMUMS**  
Rwys 14, 32: Standard with minimum  
climb of 500' per NM to 600.

NOTE: Chart not to scale.



## DEPARTURE ROUTE DESCRIPTION

TAKEOFF RUNWAY 14: Climb on heading 148° to 600 for RADAR vectors to BBYSE, thence. . .  
TAKEOFF RUNWAY 32: Climb on heading 328° to 600 for RADAR vectors to BBYSE, thence. . .  
. . .on track 331° to SPICR, then on track 331° to WLLIS, then on track 332° to STYCK, then on  
(transition). Maintain ATC assigned altitude. Expect filed altitude 10 minutes after departure.

DOLEY TRANSITION (STYCK8.DOLEY)  
WTSON TRANSITION (STYCK8.WTSON)

# STYCK EIGHT DEPARTURE (RNAV)

(STYCK8.STYCK) 07OCT21

WHARTON, TEXAS  
WHARTON RGNL(A.R.M)

SC-5, 23 JAN 2025 to 20 FEB 2025

SC-5, 23 JAN 2025 to 20 FEB 2025