

APP CRS	Rwy Idg	4000
094°	TDZE	784
	Apt Elev	787

RNAV (GPS) RWY 9

VAN WERT COUNTY (VNW)

RNP APCH - GPS.

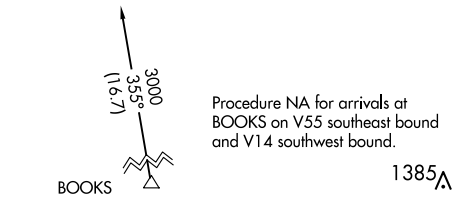
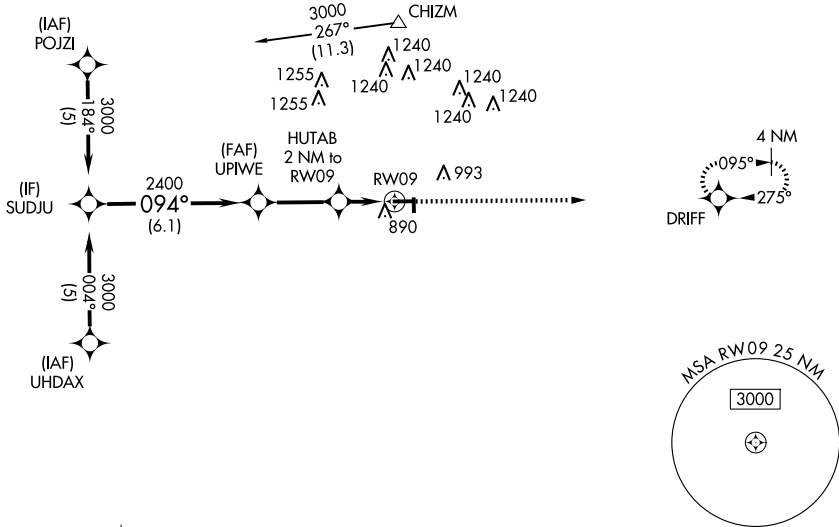
▼ Circling NA to Rwys 18 and 36. Circling Rwy 27 NA at night. Rwy 9 helicopter visibility reduction below $\frac{3}{4}$ SM NA.

▲

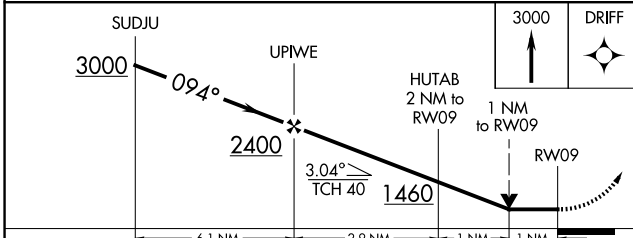
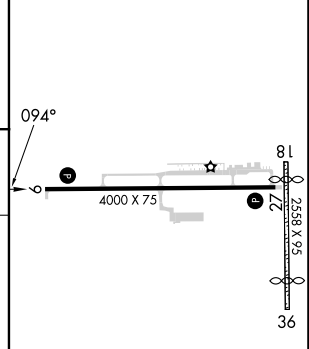
MISSED APPROACH: Climb to 3000 direct DRIFT and hold.

AWOS-3 125.175	FORT WAYNE APP CON 127.2 284.6	UNICOM 123.0 (CTAF) 0
--------------------------	--	---------------------------------

Procedure NA for arrivals at CHIZM on V38 eastbound.



ELEV	787	TDZE	784
------	-----	------	-----



	6.1 NM		2.9 NM		1 NM		1 NM	
CATEGORY	A		B		C		D	
LNAV MDA	1160-1		376 (400-1)		1160-1 $\frac{1}{4}$		376 (400-1 $\frac{1}{4}$)	
C CIRCLING	1340-1		553 (600-1)		1340-1 $\frac{1}{2}$		1600-2 $\frac{3}{4}$ 813 (900-2 $\frac{3}{4}$)	

MIRL Rwy 9-27 **0**
REIL Rws 9 and 27 **0**

EC-2, 23 JAN 2025 to 20 FEB 2025

EC-2, 23 JAN 2025 to 20 FEB 2025