


WAAS CH 45818 W18A	APP CRS 180°	Rwy ldg 5001
		TDZE 44
		Apt Elev 46

RNAV (GPS) RWY 18

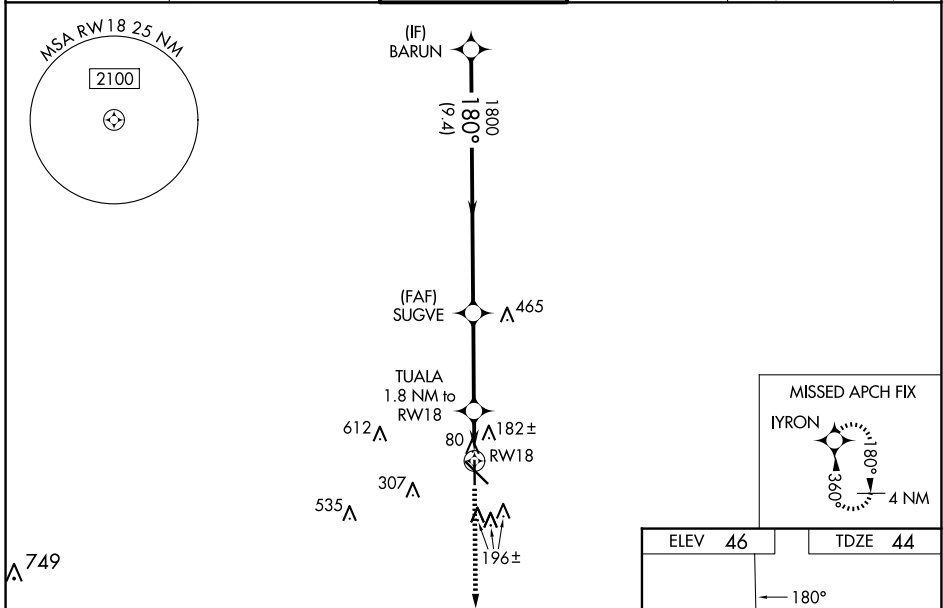
HAMMOND NORTHSHORE RGNL (HDC)

RNP APCH - GPS.

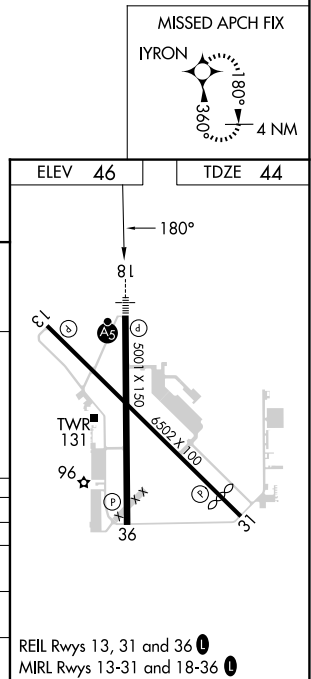
⚠ Baro-VNAV and VDP NA when using Louis Armstrong New Orleans Intl altimeter setting. When local altimeter setting not received, use Louis Armstrong New Orleans Intl altimeter setting and increase LPV DA to 339 feet; increase LNAV/VNAV DA to 555 feet and all visibilities ¼ SM. Increase all MDAs 100 feet and LNAV visibility Cat C/D ½ SM, and Circling visibility Cat C/D ½ SM. For inop ALS when using Louis Armstrong New Orleans Intl altimeter increase LPV all Cats visibility to ¾ SM; LNAV/VNAV all Cats visibility to 1 ¾ SM and LNAV Cats C/D visibility to 1 ¾ SM. For inop ALS increase LNAV/VNAV all Cats visibility to 1 ¼ SM and LNAV Cat C/D visibility to 1 ¼ SM.

MALSRL
 MISSED APPROACH: Climb to 2200 direct IYRON and hold.

ATIS 118.325	NEW ORLEANS APP CON 119.3 350.35	HAMMOND TOWER ★ 120.575 (CTAF) 0	GND CON 119.85	CLNC DEL 119.3 (When twr closed)
------------------------	--	---	--------------------------	---



	BARUN		SUGVE		TUALA 1.8 NM to RWY 18		RWY 18	
	1800		1800		1.1 NM to RWY 18		RWY 18	
GP 3.00° TCH 52	180°		180°		660		RWY 18	
	9.4 NM		3.5 NM		0.7 NM		1.1 NM	
CATEGORY	A		B		C		D	
LPV DA	250-½		206 (300-½)					
LNAV/VNAV DA	466-¾		422 (500-¾)					
LNAV MDA	460-½		416 (500-½)		460-¾		416 (500-¾)	
C CIRCLING	500-1		454 (500-1)		620-1½ 574 (600-1½)		920-2¾ 874 (900-2¾)	



SC-4, 23 JAN 2025 to 20 FEB 2025

SC-4, 23 JAN 2025 to 20 FEB 2025