

APP CRS	Rwy Idg	5812
315°	TDZE	42
	Apt Elev	46

RNAV (GPS) RWY 31

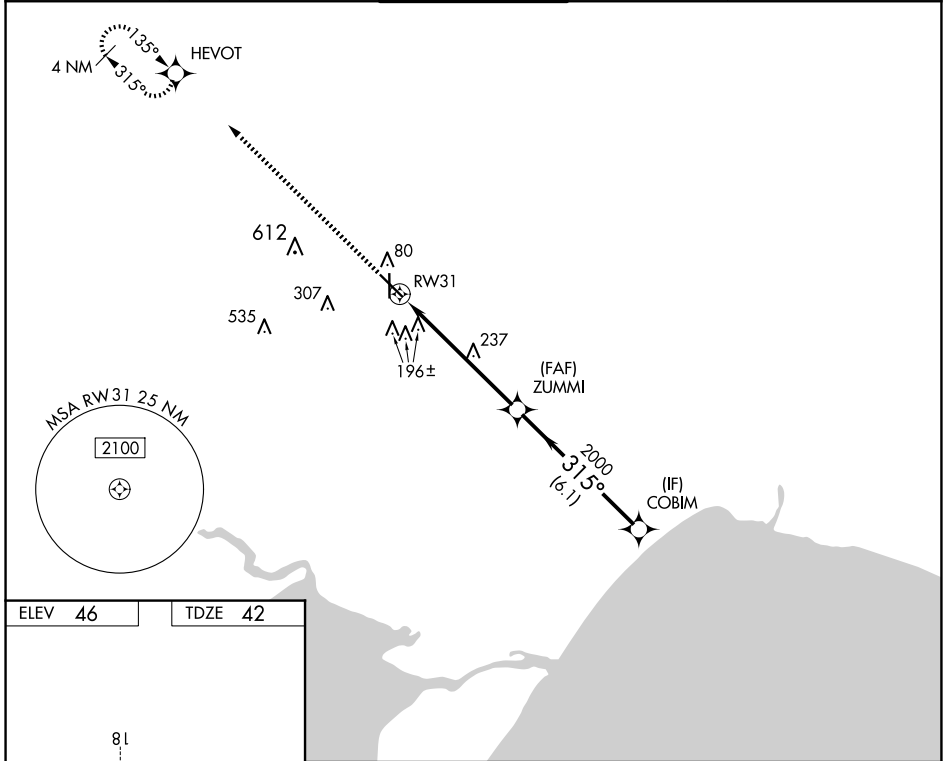
HAMMOND NORTHSORE RGNL (HDC)

RNP APCH - GPS.

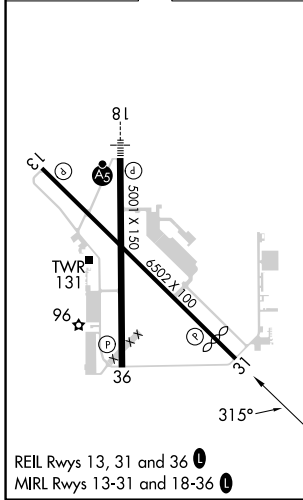
▼ Rwy 31 helicopter visibility reduction below 3/4 SM NA. VDP NA when using Louis Armstrong New Orleans Intl altimeter setting. When local altimeter setting not received, use Louis Armstrong New Orleans Intl altimeter setting and increase all MDAs 100 feet and LNAV visibility Cat C/D 1/2 SM, and Circling visibility Cat C/D 1/2 SM.

MISSED APPROACH:
Climb to 2000 direct HEVOT and hold.

ATIS 118.325	NEW ORLEANS APP CON 119.3 350.35	HAMMOND TOWER ★ 120.575 (CTAF) 0	GND CON 119.85	CLNC DEL 119.3 (When twr closed)
------------------------	--	---	--------------------------	---



ELEV 46	TDZE 42
---------	---------



REIL Rwy 13, 31 and 36
MIRL Rwy 13-31 and 18-36

2000	HEVOT	ZUMMI	COBIM	
↑	✦			
1.2 NM	1.2 NM to RWY 31	4.8 NM	6.1 NM	
		315°	2000	
		3.05°	2000	
		VGS1 and descent angles not coincident (VGS1 Angle 3.30/TCH 56).		
CATEGORY	A	B	C	D
LNAV MDA	500-1	458 (500-1)	500-1 3/8	458 (500-1 3/8)
CIRCLING	500-1	454 (500-1)	620-1 1/2 574 (600-1 1/2)	920-2 3/4 874 (900-2 3/4)

SC-4, 23 JAN 2025 to 20 FEB 2025

SC-4, 23 JAN 2025 to 20 FEB 2025