

AKUNA NINE DEPARTURE (RNAV)

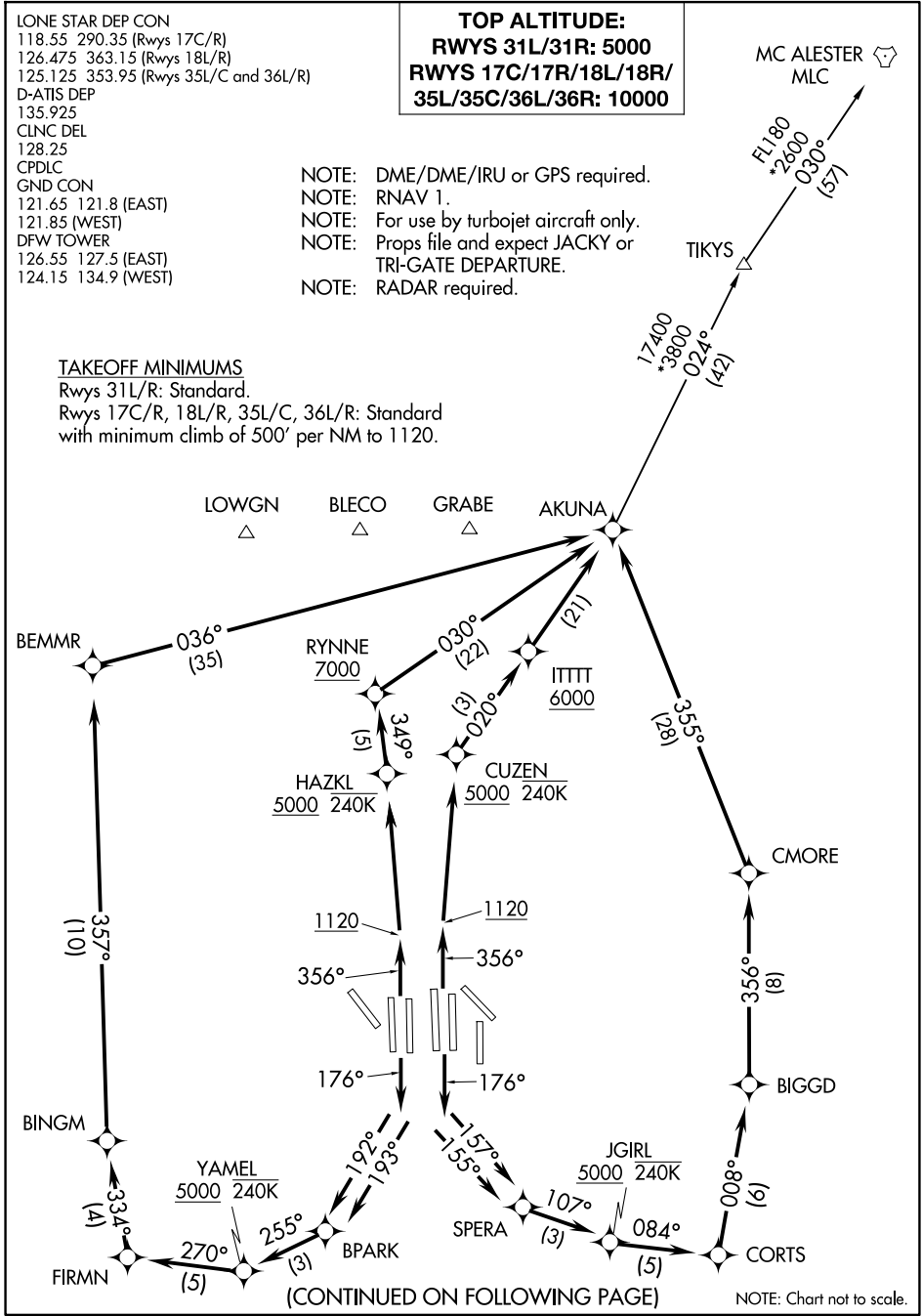
LONE STAR DEP CON
 118.55 290.35 (Rwys 17C/R)
 126.475 363.15 (Rwys 18L/R)
 125.125 353.95 (Rwys 35L/C and 36L/R)
 D-ATIS DEP
 135.925
 CLNC DEL
 128.25
 CPDLC
 GND CON
 121.65 121.8 (EAST)
 121.85 (WEST)
 DFW TOWER
 126.55 127.5 (EAST)
 124.15 134.9 (WEST)

TOP ALTITUDE:
RWYS 31L/31R: 5000
**RWYS 17C/17R/18L/18R/
 35L/35C/36L/36R: 10000**

- NOTE: DME/DME/IRU or GPS required.
- NOTE: RNAV 1.
- NOTE: For use by turbojet aircraft only.
- NOTE: Props file and expect JACKY or TRI-GATE DEPARTURE.
- NOTE: RADAR required.

TAKEOFF MINIMUMS

Rwys 31L/R: Standard.
 Rwys 17C/R, 18L/R, 35L/C, 36L/R: Standard
 with minimum climb of 500' per NM to 1120.



(CONTINUED ON FOLLOWING PAGE)

NOTE: Chart not to scale.

SC-2, 23 JAN 2025 to 20 FEB 2025

SC-2, 23 JAN 2025 to 20 FEB 2025

AKUNA NINE DEPARTURE (RNAV)



DEPARTURE ROUTE DESCRIPTION

TAKEOFF RUNWAY 17C: Climb on heading 176° to intercept course 157° to SPERA, then on track 107° to cross JGIRL at or above 5000 and at or below 240K, then on depicted route to AKUNA, thence. . . .

TAKEOFF RUNWAY 17R: Climb on heading 176° to intercept course 155° to SPERA, then on track 107° to cross JGIRL at or above 5000 and at or below 240K, then on depicted route to AKUNA, thence. . . .

TAKEOFF RUNWAY 18L: Climb on heading 176° to intercept course 193° to BPARK, then on track 255° to cross YAMEL at or above 5000 and at or below 240K, then on depicted route to AKUNA, thence. . . .

TAKEOFF RUNWAY 18R: Climb on heading 176° to intercept course 192° to BPARK, then on track 255° to cross YAMEL at or above 5000 and at or below 240K, then on depicted route to AKUNA, thence. . . .

TAKEOFF RUNWAYS 35L/C: Climb on heading 356° to 1120, then direct CUZEN, cross CUZEN at or above 5000 and at or below 240K, then on track 020° to cross ITTTT at or above 6000, then on depicted route to AKUNA, thence. . . .

TAKEOFF RUNWAYS 36L/R: Climb on heading 356° to 1120, then direct HAZKL, cross HAZKL at or above 5000 and at or below 240K, then on track 349° to cross RYNNE at or above 7000, then on depicted route to AKUNA, thence. . . .

. . . .on (transition) maintain 10000. Expect filed altitude 10 minutes after departure.

TAKEOFF RUNWAYS 31L/R: Climb on heading assigned by ATC, expect RADAR vectors to AKUNA, thence. . . .

. . . .on (transition) maintain 5000. Expect filed altitude 10 minutes after departure.

MC ALESTER TRANSITION (AKUNA9.MLC)

SC-2, 23 JAN 2025 to 20 FEB 2025

SC-2, 23 JAN 2025 to 20 FEB 2025