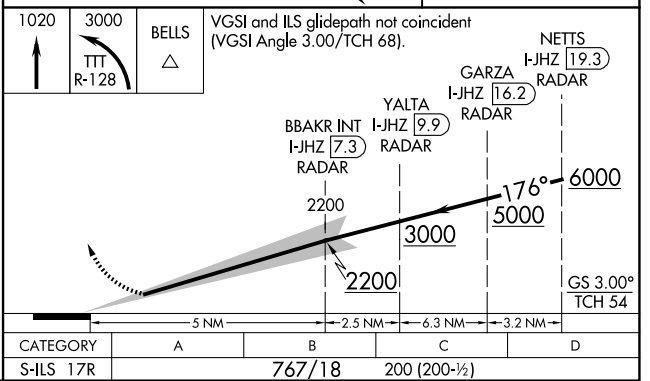
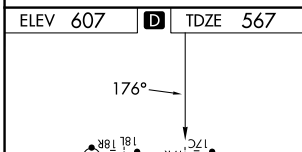
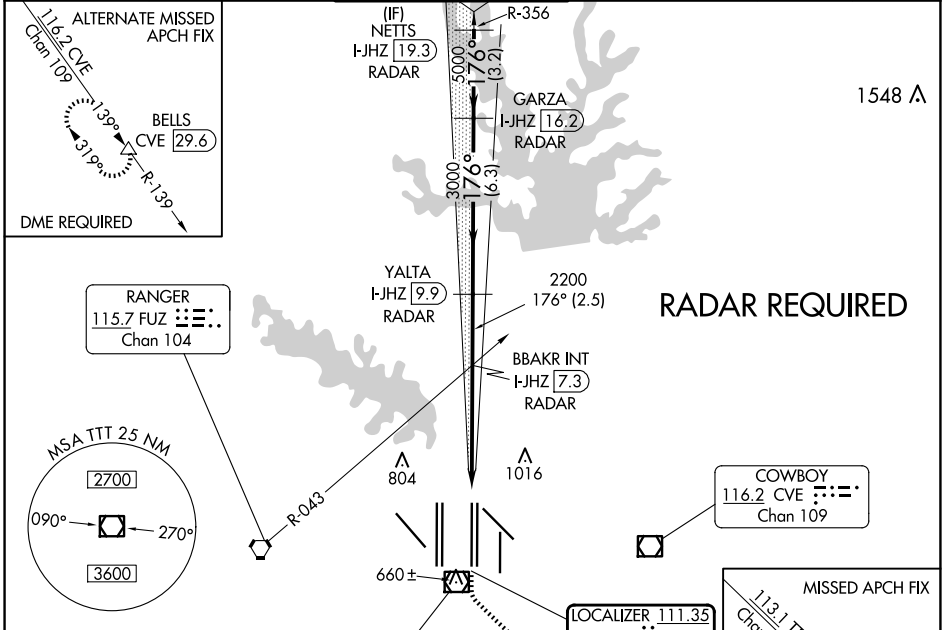


LOC/DME I-JHZ 111.35 Chan 50 (Y)	APP CRS 176°	Rwy ldg 13400 TDZE 567 Apt Elev 607
---	------------------------	--

CONVERGING ILS RWY 17R

DALLAS-FORT WORTH INTL (DFW)

▽ DME or RADAR required. Simultaneous approach authorized with Converging ILS Rwy 13R.	MALSR 	MISSED APPROACH: Climb to 1020 then climbing left turn to 3000 on TTT VOR/DME R-128 to BELLS INT/TTT 33.2 DME and hold.			
D-ATIS ARR 123.775 DEP 135.925	LONE STAR APP CON 127.075	DFW TOWER 126.55 127.5 EAST 124.15 134.9 WEST	GND CON 121.65 121.8 EAST 121.85 WEST	CLNC DEL 128.25	CPDLC



HIRL all Rwys
REIL Rws 13L and 31L
TDZ/CL all Rws except 13L and 31L

CONVERGING ILS RWY 17R

SC-2, 23 JAN 2025 to 20 FEB 2025

SC-2, 23 JAN 2025 to 20 FEB 2025