

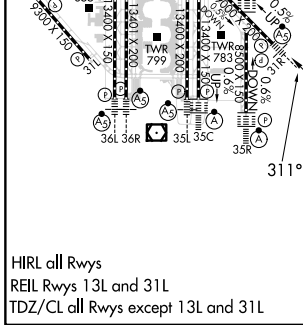
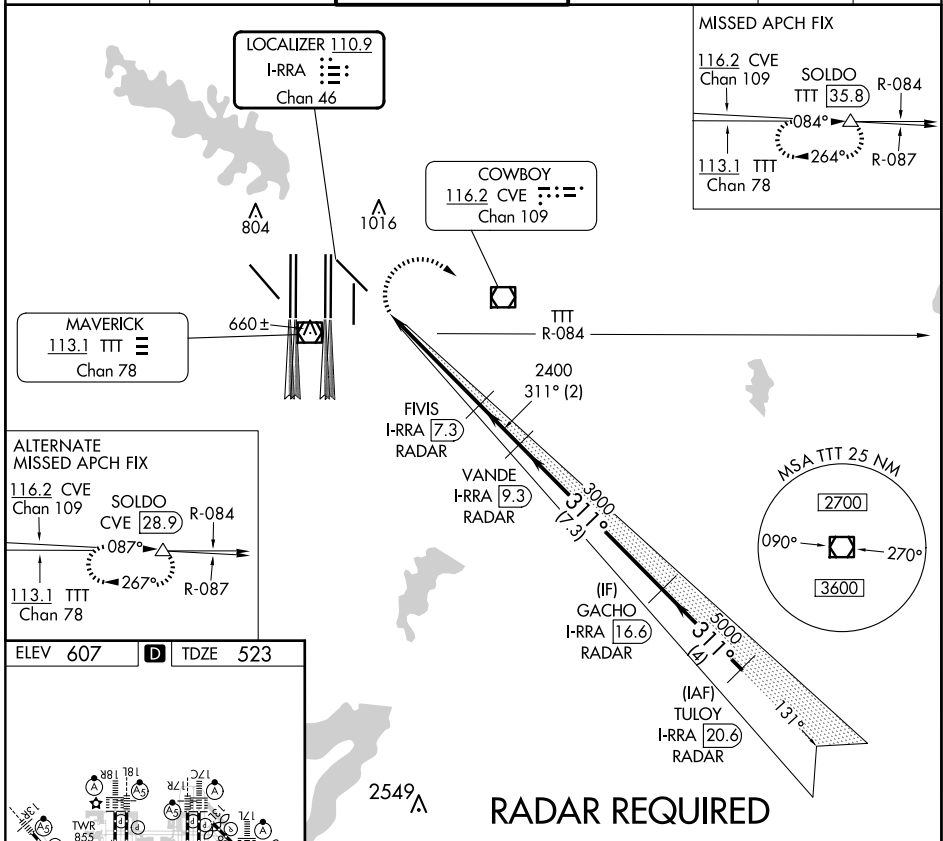
LOC/DME I-RRA 110.9 Chan 46	APP CRS 311°	Rwy Idg TDZE Apt Elev 8373 523 607
---	------------------------	--

CONVERGING ILS RWY 31R

DALLAS-FORT WORTH INTL (DFW)

⚠ Inop table does not apply. DME required. Simultaneous converging approach authorized with Converging ILS Rwy 35L/C and Converging ILS Rwy 36L/R.	MALSR 	MISSED APPROACH: Climbing right turn to 3000 on heading 125° and on TTT VOR/DME R-084 to SOLDO/TTT 35.8 DME and hold.
---	-----------	---

D-ATIS ARR 123.775 DEP 135.925	LONE STAR APP CON 135.5 125.2	DFW TOWER 126.55 127.5 EAST 124.15 134.9 WEST	GND CON 121.65 121.8 EAST 121.85 WEST	CLNC DEL 128.25	CPDLC
--	---	---	---	---------------------------	-------



3000	TTT R-084	SOLDO	VANDE I-RRA 9.3 RADAR	GACHO I-RRA 16.6 RADAR	TULOY I-RRA 20.6 RADAR
hdg 125°					
311°					
3000					
2400					
3000					
5000					
5000					
GS 3.00°					
TCH 53					
VGSi and ILS glidepath not coincident (VGSi Angle 3.00/TCH 69).					
	5.8 NM	2 NM	7.3 NM	4 NM	
CATEGORY	A	B	C	D	
S-ILS 31R	1528-4	1005 (1000-4)	1583-4	1060 (1000-4)	NA

CONVERGING ILS RWY 31R

SC-2, 23 JAN 2025 to 20 FEB 2025

SC-2, 23 JAN 2025 to 20 FEB 2025