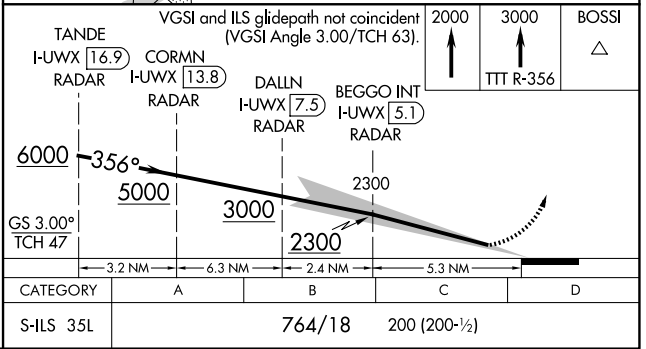
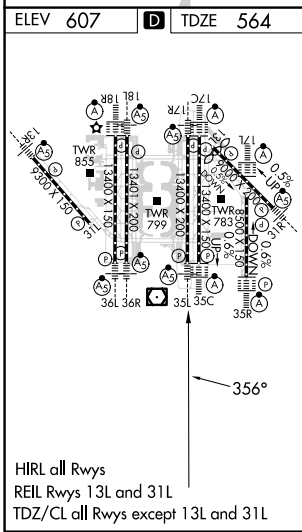
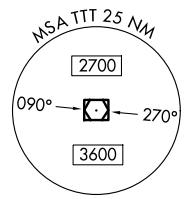
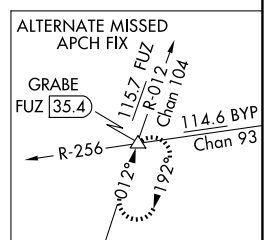
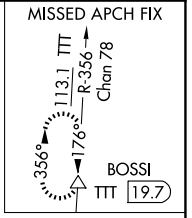
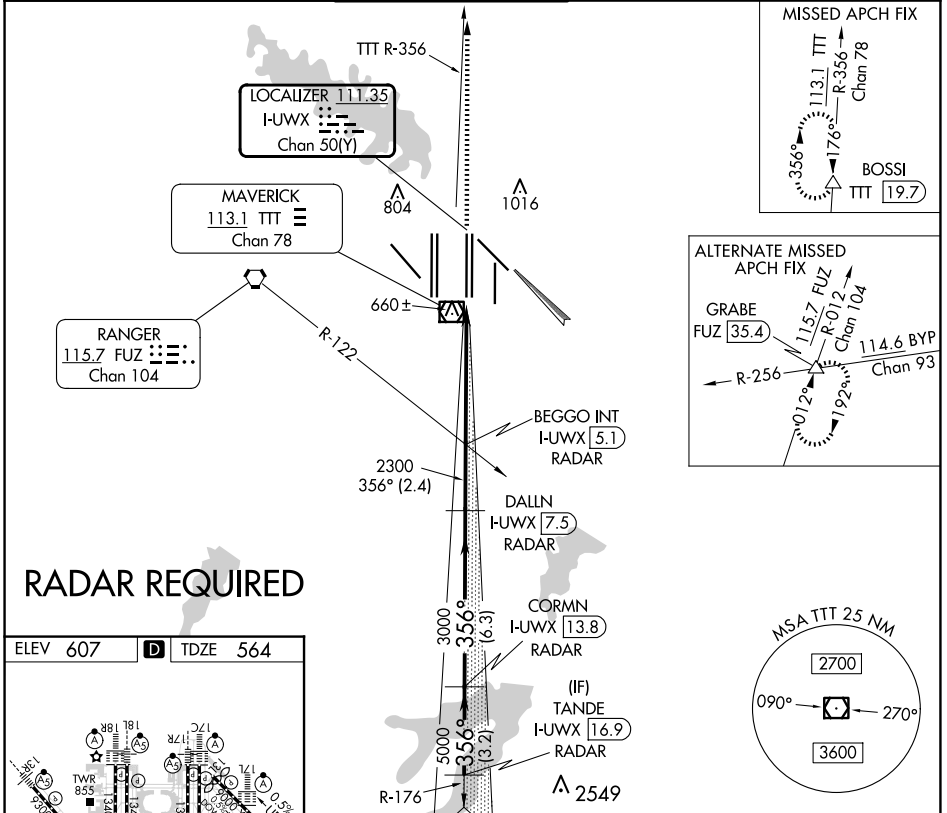


LOC/DME I-UWX 111.35 Chan 50(Y)	APP CRS 356°	Rwy Idg 13400 TDZE 564 Apt Elev 607
---	------------------------	--

CONVERGING ILS RWY 35L

DALLAS-FORT WORTH INTL (DFW)

▼ DME or RADAR required. Simultaneous approach authorized with Converging ILS Rwy 31R.		MALS R 	MISSED APPROACH: Climb to 2000 then climb to 3000 on TTT VOR/DME R-356 to BOSSI/TTT 19.7 DME/RADAR and hold.			
D-ATIS ARR 123.775 DEP 135.925	LONE STAR APP CON 127.075	DFW TOWER 126.55 127.5 EAST 124.15 134.9 WEST		GND CON 121.65 121.8 EAST 121.85 WEST	CLNC DEL 128.25	CPDLC



SC-2, 23 JAN 2025 to 20 FEB 2025

SC-2, 23 JAN 2025 to 20 FEB 2025