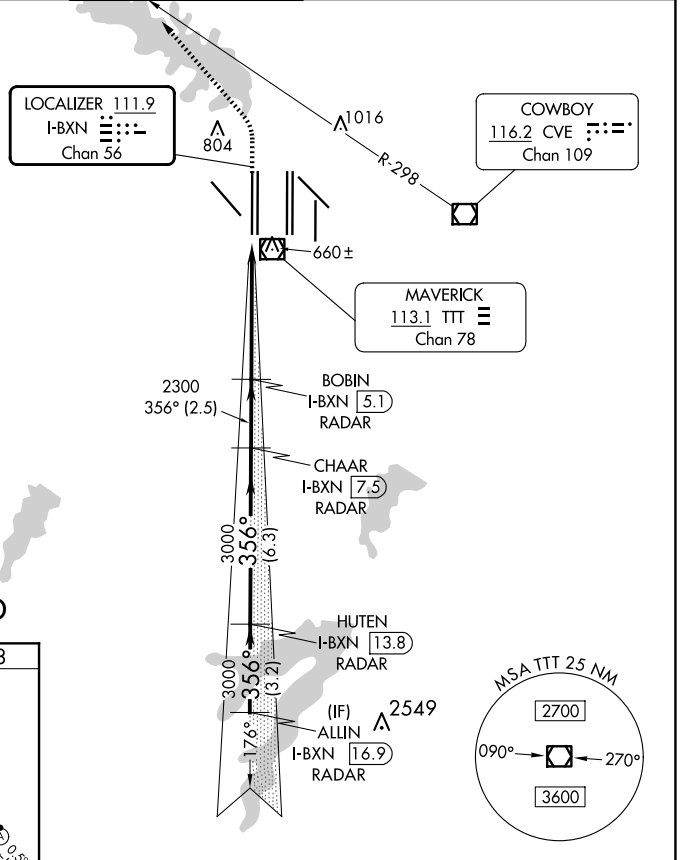
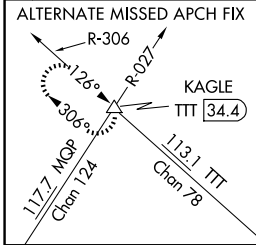
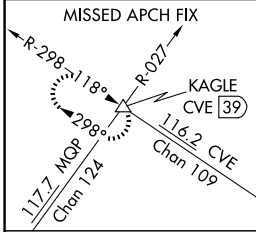


LOC/DME I-BXN 111.9 Chan 56	APP CRS 356°	Rwy Idg TDZE Apt Elev 13400 588 607
---	------------------------	---

CONVERGING ILS RWY 36L

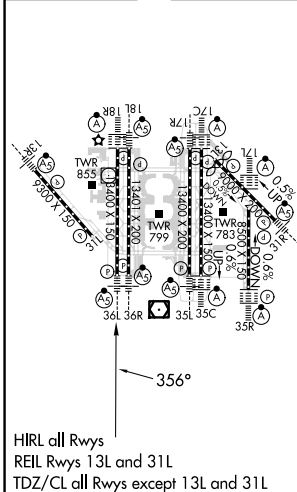
DALLAS-FORT WORTH INTL (DFW)

▼ DME or RADAR required. Simultaneous approach authorized with CONVERGING ILS RWY 31R.		MALSR 	MISSED APPROACH: Climb to 1100 then climbing left turn to 3000 on heading 315° and CVE VOR/DME R-298 to KAGLE INT/CVE VOR/DME 39 DME and hold.			
D-ATIS ARR 123.775 DEP 135.925	LONE STAR APP CON 118.425	DFW TOWER 126.55 127.5 EAST 124.15 134.9 WEST		GND CON 121.65 121.8 EAST 121.85 WEST	CLNC DEL 128.25	CPDLC

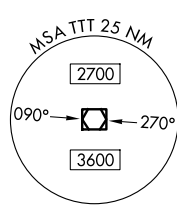


RADAR REQUIRED

ELEV 607	D	TDZE 588
-----------------	----------	-----------------



1100	3000	CVE R-298	KAGLE	BOBIN I-BXN 5.1	CHAAR I-BXN 7.5	HUTEN I-BXN 13.8	ALLIN I-BXN 16.9
↑	hdg 315°		△	RADAR	RADAR	RADAR	RADAR
VGSI and ILS glidepath not coincident (VGSI Angle 3.00/TCH 72).				2300	3000	3000	4000
				5.2 NM	2.5 NM	6.3 NM	3.2 NM
CATEGORY				A	B	C	D
S-ILS 36L				788/18 200 (200-1/2)			



CONVERGING ILS RWY 36L

SC-2, 23 JAN 2025 to 20 FEB 2025

SC-2, 23 JAN 2025 to 20 FEB 2025