

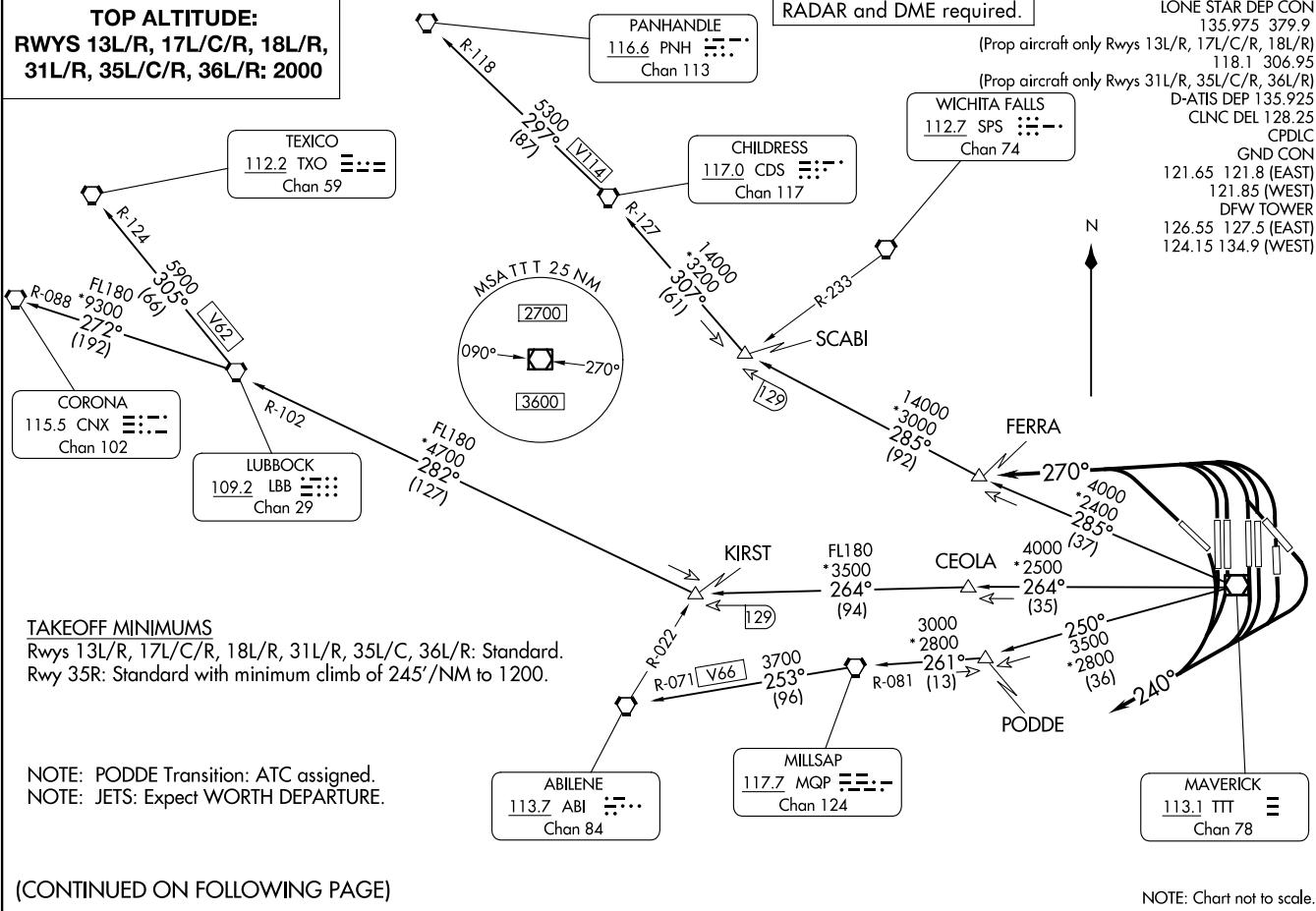
COYOTE FOUR DEPARTURE  
(COYTE4.TTT) 25JAN24

DALLAS-FORT WORTH, TEXAS  
DALLAS-FORT WORTH INTL (DFW)

**TOP ALTITUDE:**  
RWYS 13L/R, 17L/C/R, 18L/R,  
31L/R, 35L/C/R, 36L/R: 2000

**RADAR and DME required.**

LONE STAR DEP CON  
135.975 379.9  
118.1 306.95  
D-ATIS DEP 135.925  
CLNC DEL 128.25  
CPDIC  
GND CON  
121.65 121.8 (EAST)  
121.85 (WEST)  
DFW TOWER  
126.55 127.5 (EAST)  
124.15 134.9 (WEST)



**TAKEOFF MINIMUMS**  
Rwys 13L/R, 17L/C/R, 18L/R, 31L/R, 35L/C, 36L/R: Standard.  
Rwy 35R: Standard with minimum climb of 245'/NM to 1200.

NOTE: PODDE Transition: ATC assigned.  
NOTE: JETS: Expect WORTH DEPARTURE.

(CONTINUED ON FOLLOWING PAGE)

NOTE: Chart not to scale.

(COYTE4.TTT) 24305  
COYOTE FOUR DEPARTURE

AL-6039 (FAA)

DALLAS-FORT WORTH INTL (DFW)  
DALLAS-FORT WORTH, TEXAS

# COYOTE FOUR DEPARTURE



## DEPARTURE ROUTE DESCRIPTION

TAKEOFF RUNWAYS 13L/R, 17L/C/R, 18L/R: Climb on heading 240° for RADAR vectors to appropriate route, thence. . . .

TAKEOFF RUNWAYS 31L/R, 35L/C/R, 36L/R: Climb on heading 270° for RADAR vectors to appropriate route, thence. . . .

. . . .maintain 2000 and expect filed altitude 10 minutes after departure.

ABILENE TRANSITION (CYOTE4.ABI): From over TTT VOR/DME on TTT R-250 to PODDE, then on MQP R-081 to MQP VORTAC, then on MQP R-253 and ABI R-071 to ABI VORTAC.

CHILDRESS TRANSITION (CYOTE4.CDS): From over TTT VOR/DME on TTT R-285 to SCABI, then on CDS R-127 to CDS VORTAC.

CORONA TRANSITION (CYOTE4.CNX): From over TTT VOR/DME on TTT R-264 to KIRST, then on LBB R-102 to LBB VORTAC, then on LBB R-272 and CNX R-088 to CNX VORTAC.

LUBBOCK TRANSITION (CYOTE4.LBB): From over TTT VOR/DME on TTT R-264 to KIRST, then on LBB R-102 to LBB VORTAC.

MILLSAP TRANSITION (CYOTE4.MQP): From over TTT VOR/DME on TTT R-250 to PODDE, then on MQP R-081 to MQP VORTAC.

PANHANDLE TRANSITION (CYOTE4.PNH): From over TTT VOR/DME on TTT R-285 to SCABI, then on CDS R-127 to CDS VORTAC, then on CDS R-297 and PNH R-118 to PNH VORTAC.

PODDE TRANSITION (CYOTE4.PODDE): From over TTT VOR/DME on TTT R-250 to PODDE.

TEXICO TRANSITION (CYOTE4.TXO): From over TTT VOR/DME on TTT R-264 to KIRST, then on LBB R-102 to LBB VORTAC, then on LBB R-305 and TXO R-124 to TXO VORTAC.

SC-2, 23 JAN 2025 to 20 FEB 2025

SC-2, 23 JAN 2025 to 20 FEB 2025

# COYOTE FOUR DEPARTURE