

DALLAS THREE DEPARTURE
(DAL3 TTT) 25JAN24

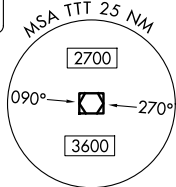
DALLAS-FORT WORTH INTL (DFW)
DALLAS-FORT WORTH, TEXAS

LONE STAR DEP CON
118.55 290.35
D-ATIS DEP
135.925
CLNC DEL
128.25
CPDLC
GND CON
121.65 121.8 (EAST)
121.85 (WEST)
DFW TOWER
126.55 127.5 (EAST)
124.15 134.9 (WEST)

RADAR and DME required.

TAKEOFF MINIMUMS
Rwys 13L/R, 17L/C/R, 18L/R,
31L/R, 35L/C, 36L/R: Standard.
Rwy 35R: Standard with minimum
climb of 245' /NM to 1200.

LITTLE ROCK
113.9 LIT
Chan 86



TEXARKANA
116.3 TXK
Chan 110

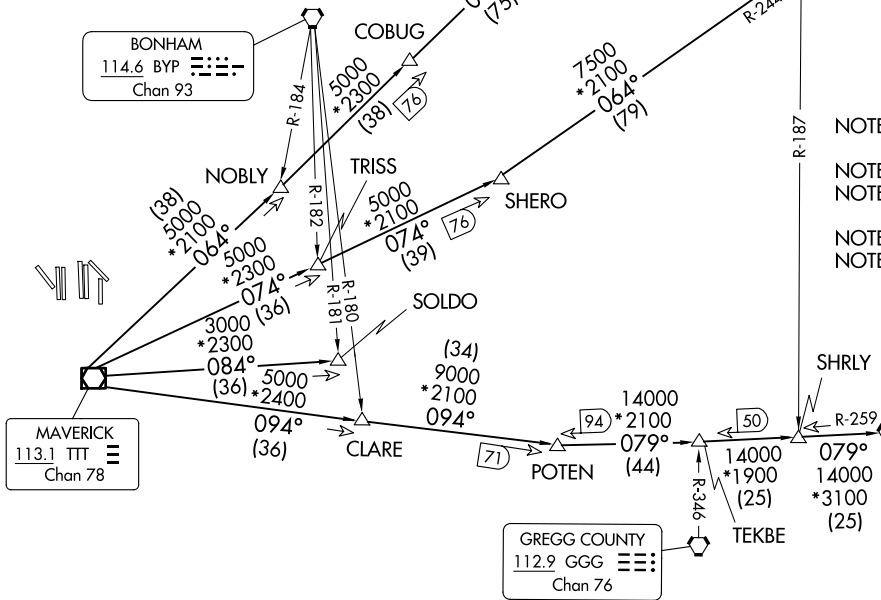
TOP ALTITUDE:
RWYS 13L/R, 17L/C/R, 18L/R,
35L/C/R, 36L/R: 10000
RWYS 31L/R: 5000

NOTE: BELCHER Transition: For aircraft inbound to the JAN, MLU, and SHV terminal areas only.
NOTE: SOLDO Transition: ATC assigned.
NOTE: For all aircraft requesting FL230 and below expect GARLAND departure.
NOTE: For all aircraft requesting FL240 and above.
NOTE: Dallas-Fort Worth Intl Departures: Jets maintain 240K until leaving 5000.

DALLAS THREE DEPARTURE
(DAL3 TTT) 24305

AL-6039 (FAA)

DALLAS-FORT WORTH INTL (DFW)
DALLAS-FORT WORTH, TEXAS



GREGG COUNTY
112.9 GGG
Chan 76

(CONTINUED ON FOLLOWING PAGE)

NOTE: Chart not to scale.

DALLAS THREE DEPARTURE



DEPARTURE ROUTE DESCRIPTION

TAKEOFF RUNWAYS 31L/R: Climb on assigned heading, maintain 5000, thence. . . .

TAKEOFF RUNWAYS 13L/R, 17L/C/R, 18L/R, 35L/C/R, 36L/R: Climb on assigned heading, maintain 10000, thence. . . .

. . . .for RADAR vectors to appropriate route and expect filed altitude 10 minutes after departure.

BELCHER TRANSITION (DALL3.EIC): From over TTT VOR/DME on TTT R-094 to POTEN, then on EIC R-259 to EIC VORTAC.

LITTLE ROCK TRANSITION (DALL3.LIT): From over TTT VOR/DME on TTT R-064 to ORTRO, then on LIT R-235 to LIT VORTAC.

SOLDO TRANSITION (DALL3.SOLDO): From over TTT VOR/DME on TTT R-084 to SOLDO.

TEXARKANA TRANSITION (DALL3.TXK): From over TTT VOR/DME on TTT R-074 to SHERO, then on TXK R-244 to TXK VORTAC.

SC-2, 23 JAN 2025 to 20 FEB 2025

SC-2, 23 JAN 2025 to 20 FEB 2025