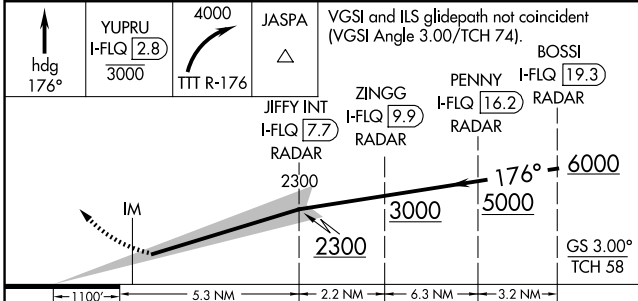
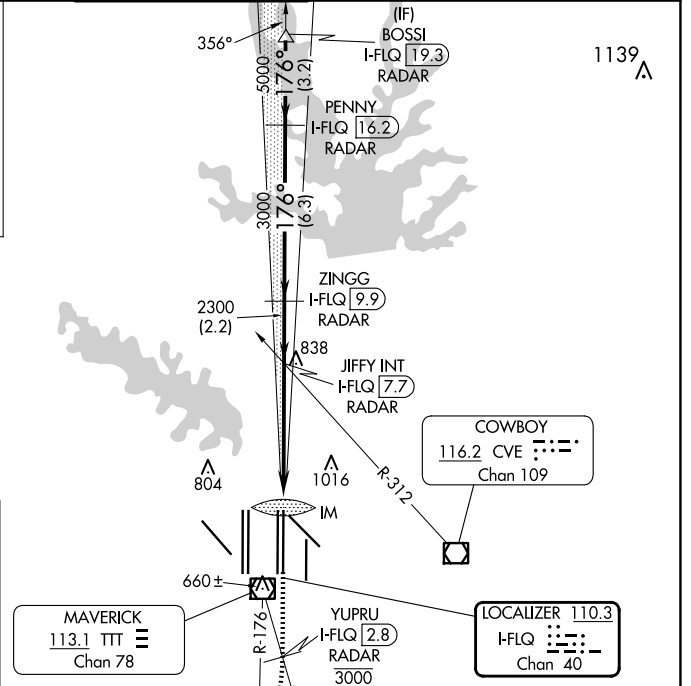
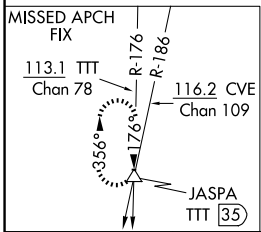
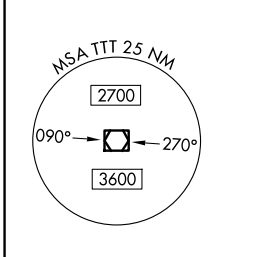
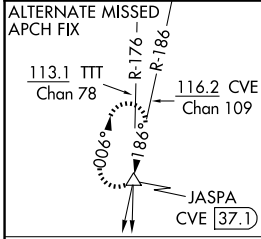


LOC/DME I-FLQ 110.3 Chan 40	APP CRS 176°	Rwy Idg TDZE Apt Elev	13400 562 607
---	------------------------	-----------------------------	--

ILS RWY 17C (SA CAT I)

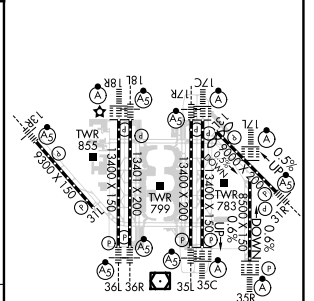
DALLAS-FORT WORTH INTL (DFW)

DME and RADAR required.		ALSF-2	MISSED APPROACH: Climb on heading 176° to cross YUPRU/2.8 DME/RADAR at or below 3000, then climbing right turn to 4000 on TTT VOR/DME R-176 to JASPA/TTT 35 DME and hold.		
Simultaneous approach authorized with Rwy 17L, 18L/R. Requires specific OPSPEC, MSPEC, or LOA approval and use of HUD to DA.					
D-ATIS ARR 123.775 DEP 135.925	LONE STAR APP CON 127.075	DFW TOWER 126.55 127.5 EAST 124.15 134.9 WEST		GND CON 121.65 121.8 EAST 121.85 WEST	CLNC DEL 128.25 CPDLC



CATEGORY	A	B	C	D
S-ILS 17C	RA 144/14 150 DA 712			

ELEV 607	TDZE 562
----------	----------



SA CATEGORY I ILS - SPECIAL AIRCREW & AIRCRAFT CERTIFICATION REQUIRED

HIRL all Rwws
REIL Rwws 13L and 31L
TDZ/CL all Rwws except 13L and 31L

SC-2, 23 JAN 2025 to 20 FEB 2025

SC-2, 23 JAN 2025 to 20 FEB 2025