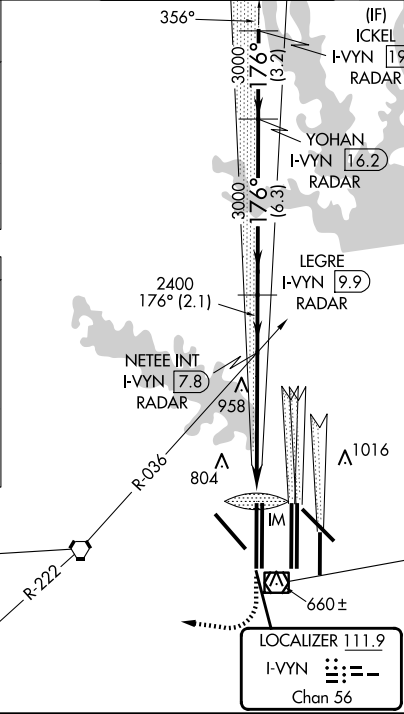
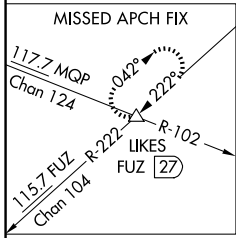
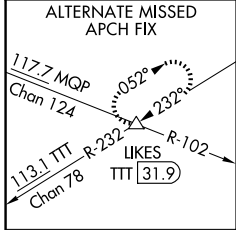


LOC/DME I-VYIN <b>111.9</b> Chan <b>56</b>	APP CRS <b>176°</b>	Rwy Idg TDZE Apt Elev	<b>13400</b> <b>607</b> <b>607</b>
--	------------------------	-----------------------------	--

# ILS RWY 18R (SA CAT I)

## DALLAS-FORT WORTH INTL (DFW)

<b>▽</b> <b>△</b>	DME or RADAR required. Simultaneous approach authorized with Rwy 17 L/C/R. Requires specific OPSPEC, MSPEC, or LOA approval and use of HUD to DH.	Rwy 18R ALS-F2 	MISSED APPROACH: Climb to 1100 then climbing right turn to 3000 on heading 250° and FUZ VORTAC R-222 to LIKES INT/FUZ VORTAC 27 DME and hold.		
D-ATIS ARR <b>123.775</b> DEP <b>135.925</b>	LONE STAR APP CON <b>118.425</b>	DFW TOWER <b>126.55 127.5</b> EAST <b>124.15 134.9</b> WEST	GND CON <b>121.65 121.8</b> EAST <b>121.85</b> WEST	CLNC DEL <b>128.25</b>	CPDLC



**1139**

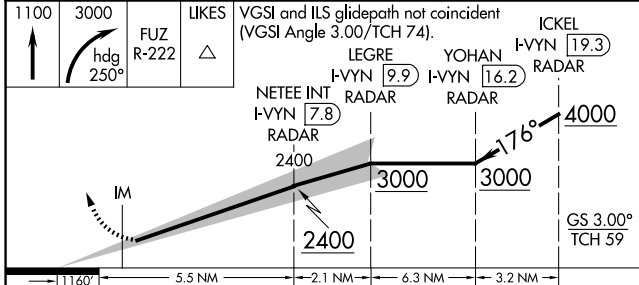
MSA TTT 25 NM  
2700  
090° 270°  
3600

**RADAR REQUIRED**

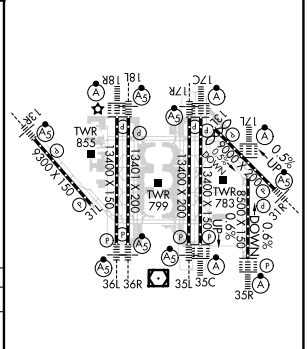
MAVERICK  
113.1 TTT   
Chan 78

ELEV 607 **D** TDZE 607

LOCALIZER 111.9  
I-VYIN   
Chan 56



1100	3000	LIKES	VGSI and ILS glidepath not coincident (VGSI Angle 3.00/TCH 74).	ICKEL I-VYIN [19.3] RADAR
	hdg 250°	FUZ R-222	LEGRE I-VYIN [9.9] RADAR	YOHAN I-VYIN [16.2] RADAR
		NETEE INT I-VYIN [7.8] RADAR		



CATEGORY	A	B	C	D
S-ILS 18R	RA 158/14		150 DA 757	

### SA CATEGORY I ILS - SPECIAL AIRCREW & AIRCRAFT CERTIFICATION REQUIRED

HIREL all Rwys  
REIL Rwy 13L and 31L  
TDZ/CL all Rwys except 13L and 31L

SC-2, 23 JAN 2025 to 20 FEB 2025

SC-2, 23 JAN 2025 to 20 FEB 2025