

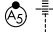
RNAV (RNP) Z RWY 13R

DALLAS-FORT WORTH INTL (DFW)

APP CRS	Rwy Idg	9300
135°	TDZE	591
	Apt Elev	606

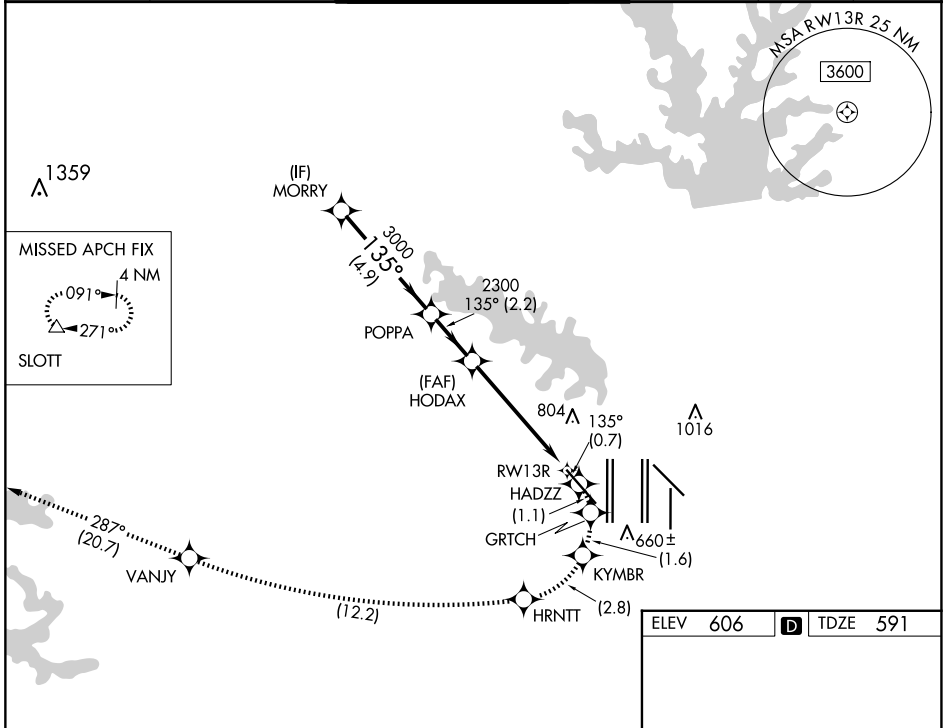
RNP AR APCH. RF required.

▽ For uncompensated Baro-VNAV systems, procedure NA below -6°C or above 54°C. Missed approach requires RNP less than 1.0.

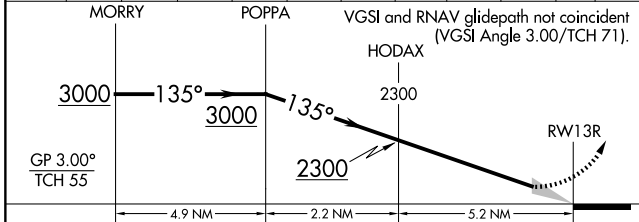
MALSR 

MISSED APPROACH: (Do not exceed 185K until HRNTT) Climb to 3000 on the RNAV missed approach route to SLOTT and hold.

D-ATIS	LONE STAR APP CON	DFW TOWER	GND CON	CLNC DEL	CPDLC
ARR 123.775	133.15 118.1	126.55 127.5 EAST	121.65 121.8 EAST	128.25	
DEP 135.925		124.15 134.9 WEST	121.85 WEST		

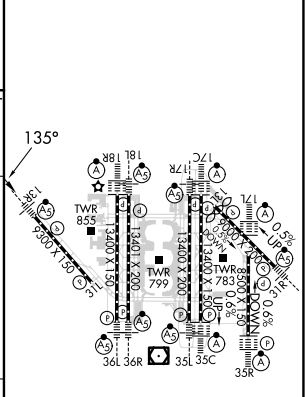


3000	HADZZ	GRTRCH	KYMBR	HRNTT	VANJY	tr 287°	SLOTT
tr 135°							



CATEGORY	A	B	C	D
RNP 0.30 DA		1041/45	450 (500-%)	

ELEV	606	TDZE	591
------	-----	------	-----



HIRL all Rwws
 REIL Rwws 13L and 31L
 TDZ/CL all Rwws except 13L and 31L

AUTHORIZATION REQUIRED

SC-2, 23 JAN 2025 to 20 FEB 2025

SC-2, 23 JAN 2025 to 20 FEB 2025