

WAAS CH 99703 W31A	APP CRS 315°	Rwy Idg 9300 TDZE 581 Apt Elev 607
--	------------------------	---

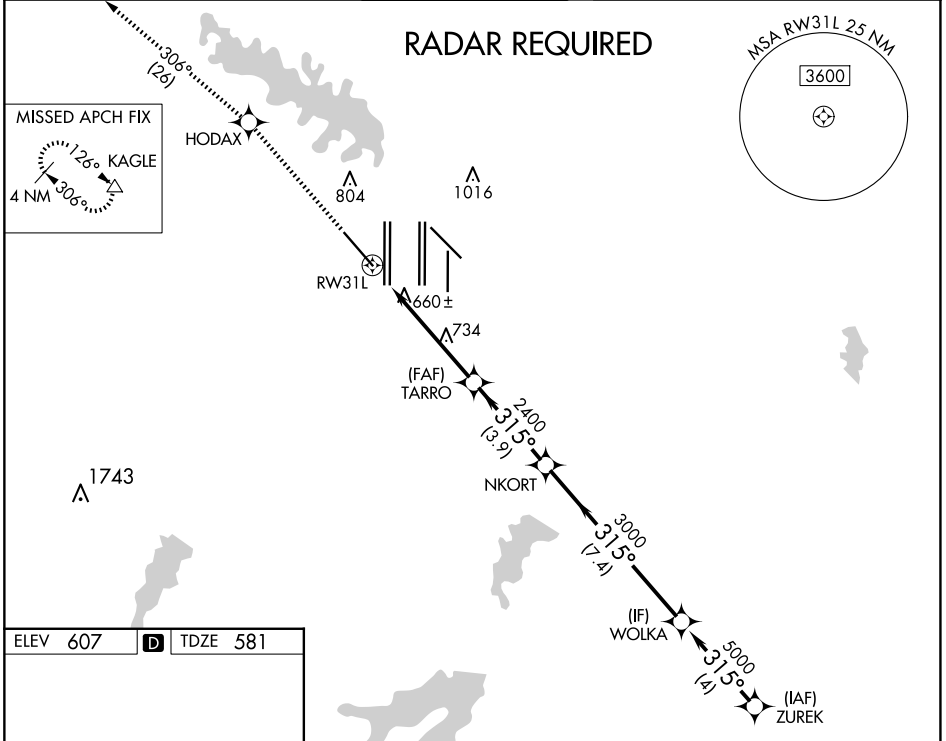
RNAV (GPS) Y RWY 31L

DALLAS-FORT WORTH INTL (DFW)

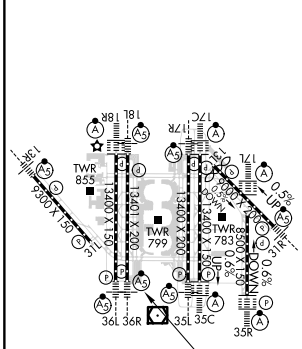
⚠ For uncompensated Baro-VNAV systems, LNAV/VNAV NA below -4°C (25°F) or above 54°C (130°F). Simultaneous approach authorized with Rwy 31R. DME/DME RNP-0.3 NA. LNAV procedure NA during simultaneous operations. Use of FD or AP providing RNAV track guidance required during simultaneous operations.

MISSED APPROACH: Climb to 3000 direct HODAX and on track 306° to KAGLE and hold.

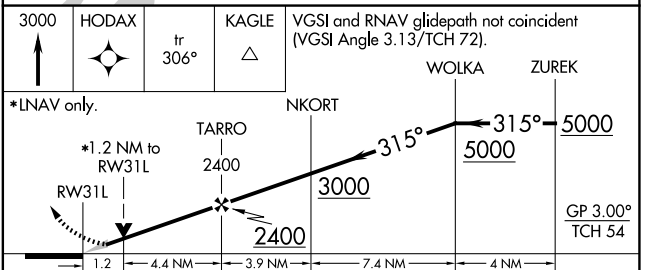
D-ATIS ARR 123.775 DEP 135.925	LONE STAR APP CON 118.425 127.075 119.4	DFW TOWER 126.55 127.5 EAST 124.15 134.9 WEST	GND CON 121.65 121.8 EAST 121.85 WEST	CLNC DEL 128.25	CPDLC
--	---	---	---	---------------------------	-------



ELEV 607	D	TDZE 581
-----------------	----------	-----------------



LPV	DA	831/40	250 (300-¾)
LNAV/VNAV	DA	907/50	326 (400-1)
LNAV MDA		1060/55	479 (500-1) 1060-1¾ 479 (500-1¾)



CATEGORY	A	B	C	D
LPV	DA	831/40	250 (300-¾)	
LNAV/VNAV	DA	907/50	326 (400-1)	
LNAV MDA	1060/55	479 (500-1)	1060-1¾	479 (500-1¾)

SC-2, 23 JAN 2025 to 20 FEB 2025

SC-2, 23 JAN 2025 to 20 FEB 2025