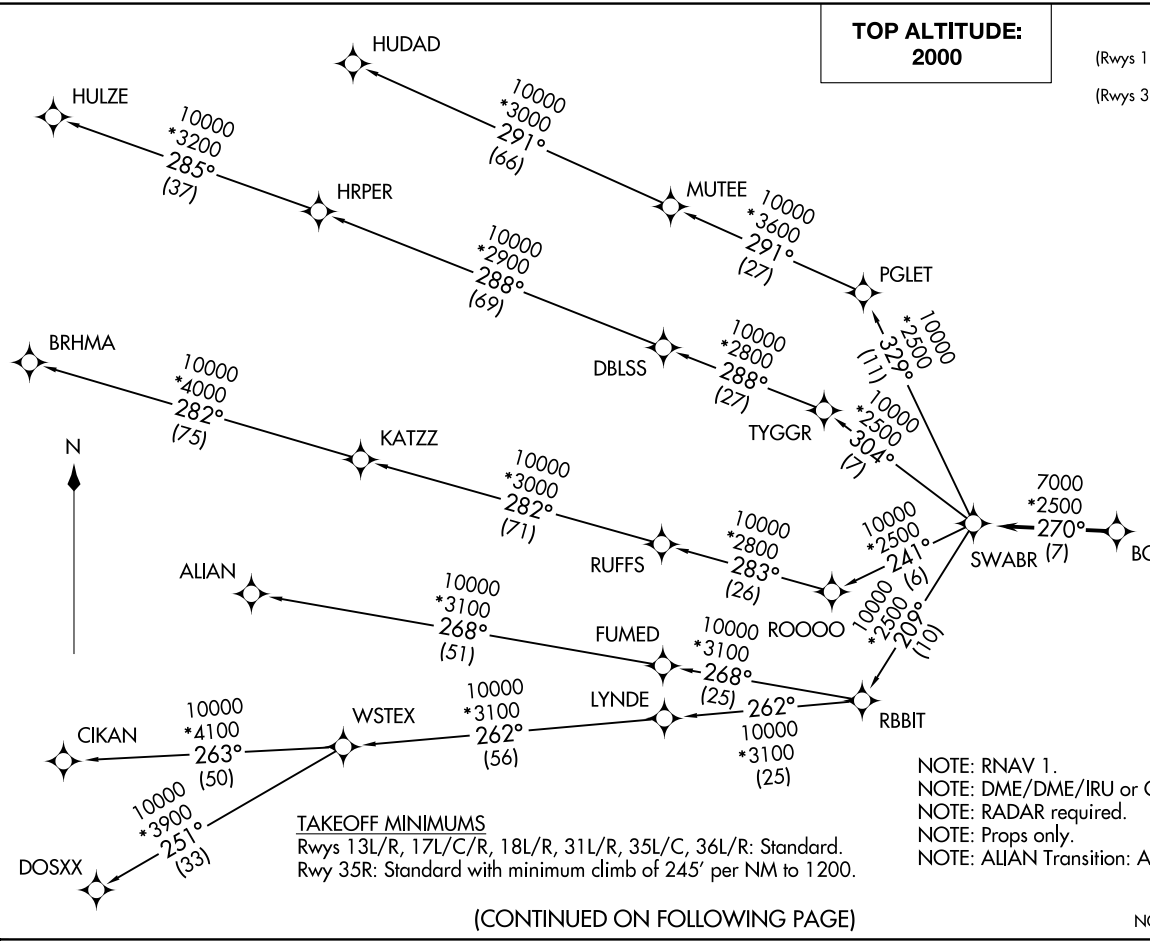
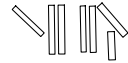


**TOP ALTITUDE:
2000**

LONE STAR DEP CON
 135.975 379.9
 (Rwys 13L/R, 17L/C/R, 18L/R)
 118.1 306.95
 (Rwys 31L/R, 35L/C/R, 36L/R)
 D-ATIS DEP
 135.925
 CLNC DEL
 128.25
 CPDLC
 GND CON
 121.65 121.8 (EAST)
 121.85 (WEST)
 DFW TOWER
 126.55 127.5 (EAST)
 124.15 134.9 (WEST)

(SWABR) .SWABR) 24305
 SWABR ONE DEPARTURE (RNAV)
 AL-6039 (FAA)

DALLAS-FORT WORTH INTL (DFW)
 DALLAS-FORT WORTH, TEXAS



TAKEOFF MINIMUMS
 Rwys 13L/R, 17L/C/R, 18L/R, 31L/R, 35L/C, 36L/R: Standard.
 Rwy 35R: Standard with minimum climb of 245' per NM to 1200.

NOTE: RNAV 1.
 NOTE: DME/DME/IRU or GPS required.
 NOTE: RADAR required.
 NOTE: Props only.
 NOTE: ALIAN Transition: ATC assigned only.

(CONTINUED ON FOLLOWING PAGE)

NOTE: Chart not to scale.

SWABR ONE DEPARTURE (RNAV)
 (SWABR) .SWABR) 24MAR22

DALLAS-FORT WORTH, TEXAS
 DALLAS-FORT WORTH INTL (DFW)

SWABR ONE DEPARTURE (RNAV)



DEPARTURE ROUTE DESCRIPTION

TAKEOFF RUNWAYS 13L/R, 17L/C/R, 18L/R, 31L/R, 35L/C/R, 36L/R: Climb on assigned heading for RADAR vectors to BOTCH. Then on track 270° to SWABR, then on (transition). Maintain 2000. Expect filed altitude 10 minutes after departure.

- ALIAN TRANSITION (SWABR1.ALIAN)
- BRHMA TRANSITION (SWABR1.BRHMA)
- CIKAN TRANSITION (SWABR1.CIKAN)
- DOSXX TRANSITION (SWABR1.DOSXX)
- HUDAD TRANSITION (SWABR1.HUDAD)
- HULZE TRANSITION (SWABR1.HULZE)
- WSTEX TRANSITION (SWABR1.WSTEX)

SC-2, 23 JAN 2025 to 20 FEB 2025

SC-2, 23 JAN 2025 to 20 FEB 2025