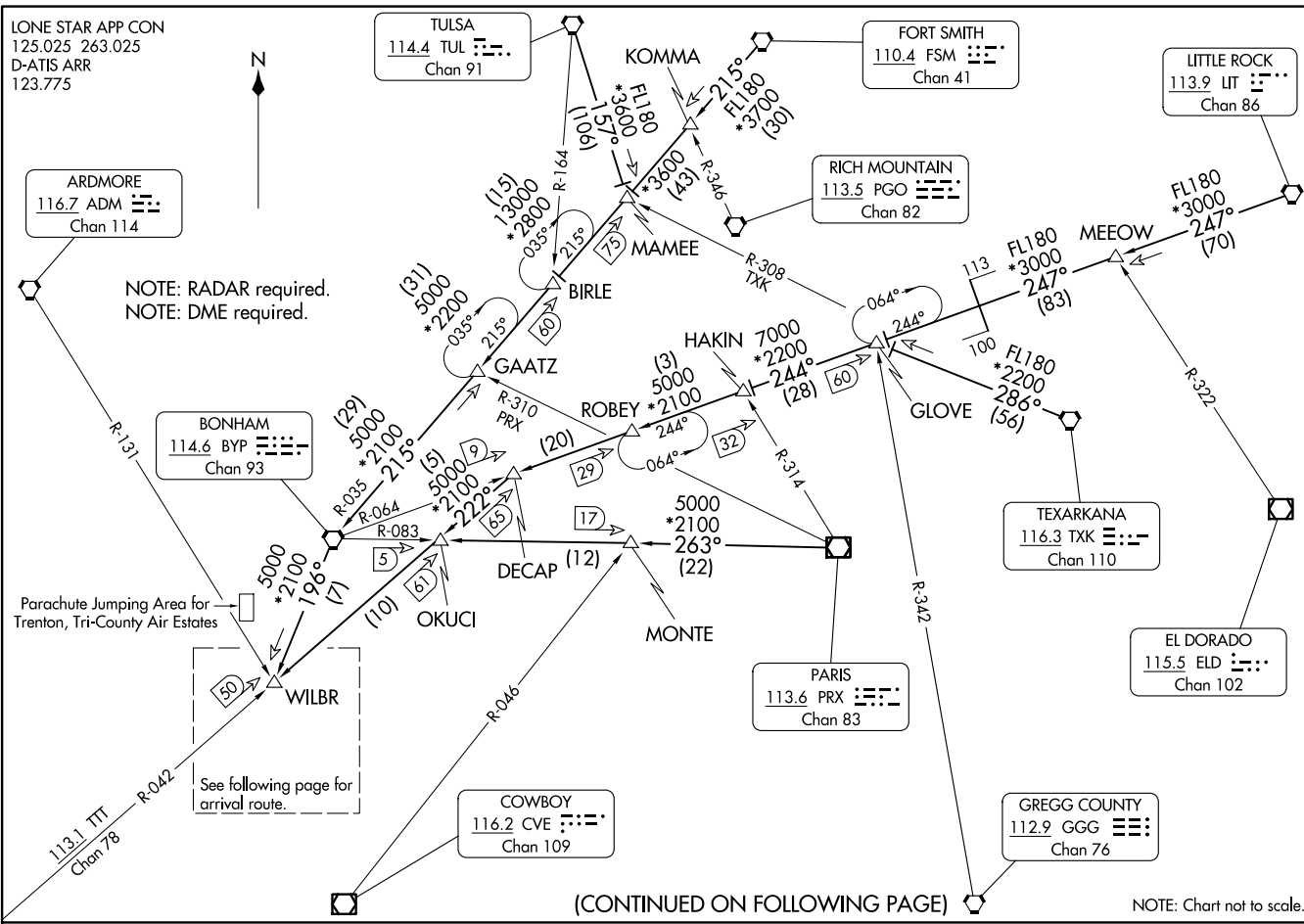


WILBR NINE ARRIVAL
(WILBR: WILBR9) 11 JUL24

Transition Routes

DALLAS-FORT WORTH INTL (DFW)
DALLAS-FORT WORTH, TEXAS



(CONTINUED ON FOLLOWING PAGE)

NOTE: Chart not to scale.

(WILBR: WILBR9) 24305

WILBR NINE ARRIVAL

Transition Routes

DALLAS-FORT WORTH INTL (DFW)
DALLAS-FORT WORTH, TEXAS

AL-6039 (FAA)

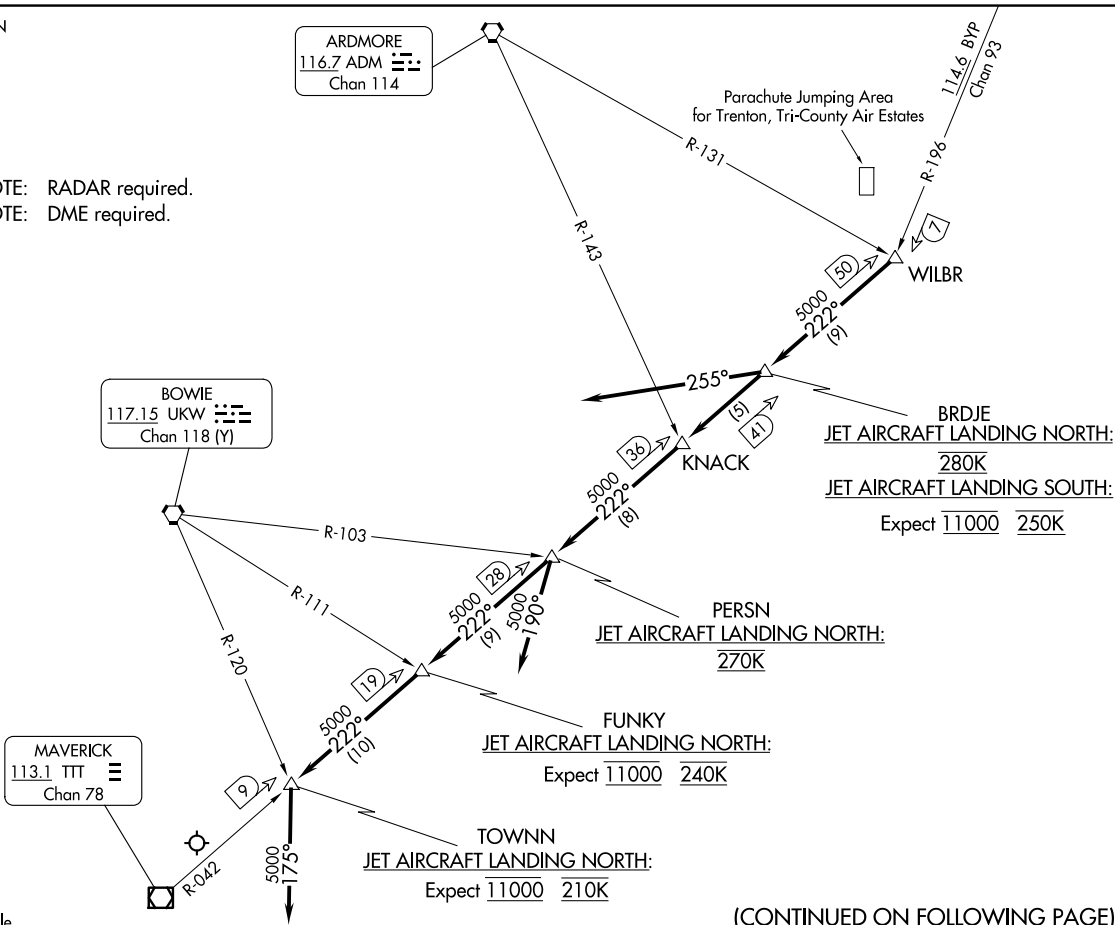
WILBR NINE ARRIVAL
(WILBR, WILBR9) 11 JUL 24

Arrival Routes

DALLAS-FORT WORTH, TEXAS
DALLAS-FORT WORTH INTL (DFW)

LONE STAR APP CON
125.025 263.025
D-ATIS ARR
123.775

NOTE: RADAR required.
NOTE: DME required.



Note: Chart not to scale

(CONTINUED ON FOLLOWING PAGE)

(WILBR, WILBR9) 24305
WILBR NINE ARRIVAL

Arrival Routes
AL-6039 (FAA)

DALLAS-FORT WORTH INTL (DFW)
DALLAS-FORT WORTH, TEXAS

WILBR NINE ARRIVAL

ARRIVAL ROUTE DESCRIPTION

BONHAM TRANSITION (BYP.WILBR9): From over BYP VORTAC on BYP R-196 to WILBR. Thence

FORT SMITH TRANSITION (FSM.WILBR9): From over FSM VORTAC on FSM R-215 to MAMEE, then on BYP R-035 to BYP VORTAC, then on BYP R-196 to WILBR. Thence

LITTLE ROCK TRANSITION (LIT.WILBR9): From over LIT VORTAC on LIT R-247 to MEEOW, then on LIT R-247 and BYP R-064 to GLOVE, then on BYP R-064 to DECAP, then on TTT R-042 to WILBR. Thence

PARIS TRANSITION (PRX.WILBR9): From over PRX VOR/DME on PRX R-263 and BYP R-083 to MONTE, then on BYP R-083 to OKUCI, then on TTT R-042 to WILBR. Thence

TEXARKANA TRANSITION (TXK.WILBR9): From over TXK VORTAC on TXK R-286 to GLOVE, then on BYP R-064 to DECAP, then on TTT R-042 to WILBR. Thence

TULSA TRANSITION (TUL.WILBR9): From over TUL VORTAC on TUL R-157 to MAMEE, then on BYP R-035 to BYP VORTAC, then on BYP R-196 to WILBR. Thence

. . . . from over WILBR on TTT R-042

ALL AIRCRAFT LANDING SOUTH: To BRDJE depart heading 255°, expect RADAR vectors for base leg.

JETS LANDING NORTH: To BRDJE, to KNACK, to PERSN, to FUNKY, to TOWNNN, then depart heading 175°, expect RADAR vectors.

PROP AIRCRAFT LANDING NORTH: To BRDJE, to KNACK, to PERSN, then depart heading 190°, expect RADAR vectors.

SC-2, 23 JAN 2025 to 20 FEB 2025

SC-2, 23 JAN 2025 to 20 FEB 2025