

RNAV 1 - DME/DME/IRU or GPS.

RADAR required.

TOP ALTITUDE:
RWYS 31L/R: 5000
RWYS 17C/R, 18L/R,
35L/C, 36L/R: 10000

NOTE: For use by turbojet aircraft only.
NOTE: Non-RNAV capable props: file and expect DALLAS or GARLAND DEPARTURE.
NOTE: RNAV capable props: file and expect the SWABR RNAV SID.

LONE STAR DEP CON
118.55 290.35
D-ATIS DEP
135.925
CLNC DEL
128.25
CPDLC
GND CON
121.65 121.8 (EAST)
121.85 (WEST)
DFW TOWER
126.55 127.5 (EAST)
124.15 134.9 (WEST)

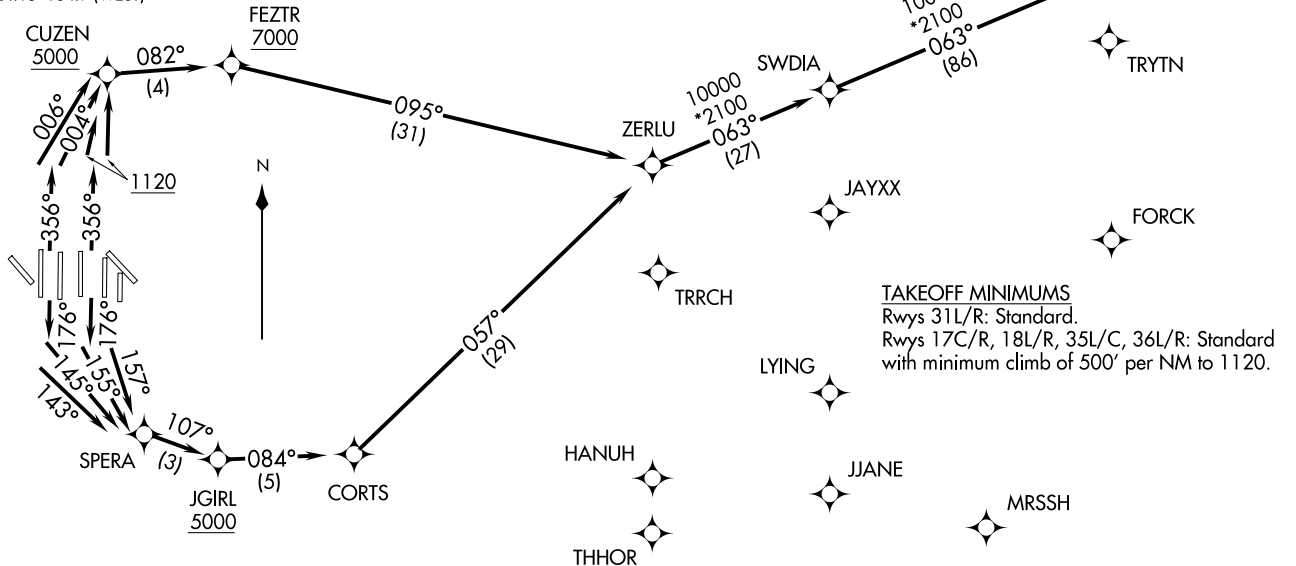
ZACHH FOUR DEPARTURE (RNAV)
(ZACHH4, ZACHH) 08SEP22

DALLAS-FORT WORTH INTL (DFW)
DALLAS-FORT WORTH, TEXAS

(ZACHH4, ZACHH) 24305
ZACHH FOUR DEPARTURE (RNAV)

AL-6039 (FAA)

DALLAS-FORT WORTH INTL (DFW)
DALLAS-FORT WORTH, TEXAS



TAKEOFF MINIMUMS
Rwys 31L/R: Standard.
Rwys 17C/R, 18L/R, 35L/C, 36L/R: Standard
with minimum climb of 500' per NM to 1120.

NOTE: Chart not to scale.

(CONTINUED ON FOLLOWING PAGE)



DEPARTURE ROUTE DESCRIPTION

TAKEOFF RWY 17C: Climb on heading 176° to intercept course 157° to SPERA, then on track 107° to cross JGIRL at or above 5000, then on track 084° to CORTS, then on track 057° to ZERLU, thence. . . .

TAKEOFF RWY 17R: Climb on heading 176° to intercept course 155° to SPERA, then on track 107° to cross JGIRL at or above 5000, then on track 084° to CORTS, then on track 057° to ZERLU, thence. . . .

TAKEOFF RWY 18L: Climb on heading 176° to intercept course 145° to SPERA, then on track 107° to cross JGIRL at or above 5000, then on track 084° to CORTS, then on track 057° to ZERLU, thence. . . .

TAKEOFF RWY 18R: Climb on heading 176° to intercept course 143° to SPERA, then on track 107° to cross JGIRL at or above 5000, then on track 084° to CORTS, then on track 057° to ZERLU, thence. . . .

TAKEOFF RWYS 35C/L: Climb on heading 356° to 1120, then direct to cross CUZEN at or above 5000, then on track 082° to cross FEZTR at or above 7000, then on track 095° to ZERLU, thence. . . .

TAKEOFF RWY 36L: Climb on heading 356° to intercept course 006° to cross CUZEN at or above 5000, then on track 082° to cross FEZTR at or above 7000, then on track 095° to ZERLU, thence. . . .

TAKEOFF RWY 36R: Climb on heading 356° to intercept course 004° to cross CUZEN at or above 5000, then on track 082° to cross FEZTR at or above 7000, then on track 095° to ZERLU, thence. . . .

. . . .on track 063° to SWDIA, then on track 063° to ZACHH, then on (transition) maintain 10000. Expect filed altitude 10 minutes after departure.

TAKEOFF RWYS 31L/R: Climb on heading assigned by ATC for RADAR vectors to ZERLU, thence. . . .

. . . .on track 063° to SWDIA, then on track 063° to ZACHH, then on (transition) maintain 5000. Expect filed altitude 10 minutes after departure.

BSKAT TRANSITION (ZACHH4.BSKAT)

SC-2, 23 JAN 2025 to 20 FEB 2025

SC-2, 23 JAN 2025 to 20 FEB 2025