

NDB CSS <b>414</b>	APP CRS <b>223°</b>	Rwy Idg <b>5097</b>
		TDZE <b>979</b>
		Apt Elev <b>980</b>

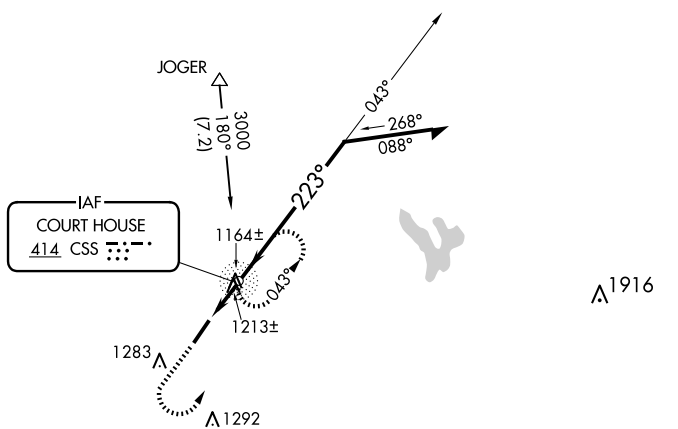
# NDB RWY 23

FAYETTE COUNTY (I23)

**⚠** When local altimeter setting not received, use Wilmington Air Park altimeter setting and increase all MDAs 60 feet, and Circling visibility Cat C ¼ SM. Procedure NA at night. Rwy 23 helicopter visibility reduction below 1 SM NA.

**⚠** MISSED APPROACH: Climb to 2000, then climbing left turn to 2600 direct CSS NDB and hold.

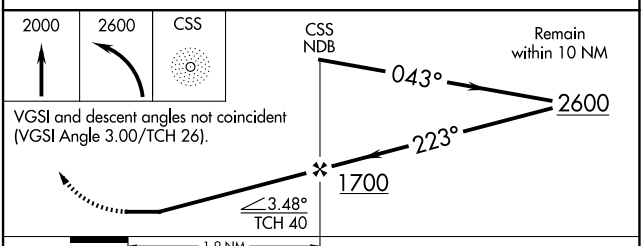
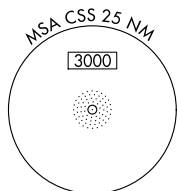
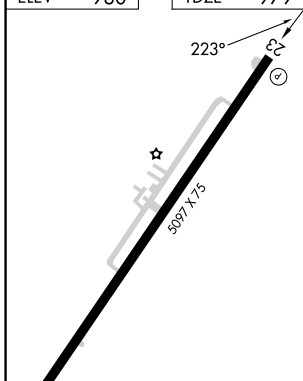
AWOS-3 <b>118.775</b>	COLUMBUS APP CON <b>134.0 279.6</b>	UNICOM <b>122.8 (CTAF)</b> <b>📻</b>
--------------------------	--	--



EC-2, 23 JAN 2025 to 20 FEB 2025

EC-2, 23 JAN 2025 to 20 FEB 2025

ELEV	980	TDZE	979
------	-----	------	-----



REIL Rwy 23 <b>📻</b>				
MIRL Rwy 5-23 <b>📻</b>				
FAF to MAP 1.9 NM				
Knots	60	90	120	150
Min:Sec	1:54	1:16	0:57	0:46
				0:38
<b>📻</b> CIRCLING	1580-1 600 (600-1)	601 (600-1)	1580-1¾ 601 (600-1¾)	1580-2 601 (600-2)
	1580-1 600 (600-1)	1640-1 660 (700-1)	1640-1¾ 660 (700-1¾)	1660-2¼ 680 (700-2¼)