

| | | |
|--|------------------------|---|
| WAAS CH 42818 W25A | APP CRS 246° | Rwy Idg 5003 TDZE 147 Apt Elev 147 |
|--|------------------------|---|

RNAV (GPS) RWY 25

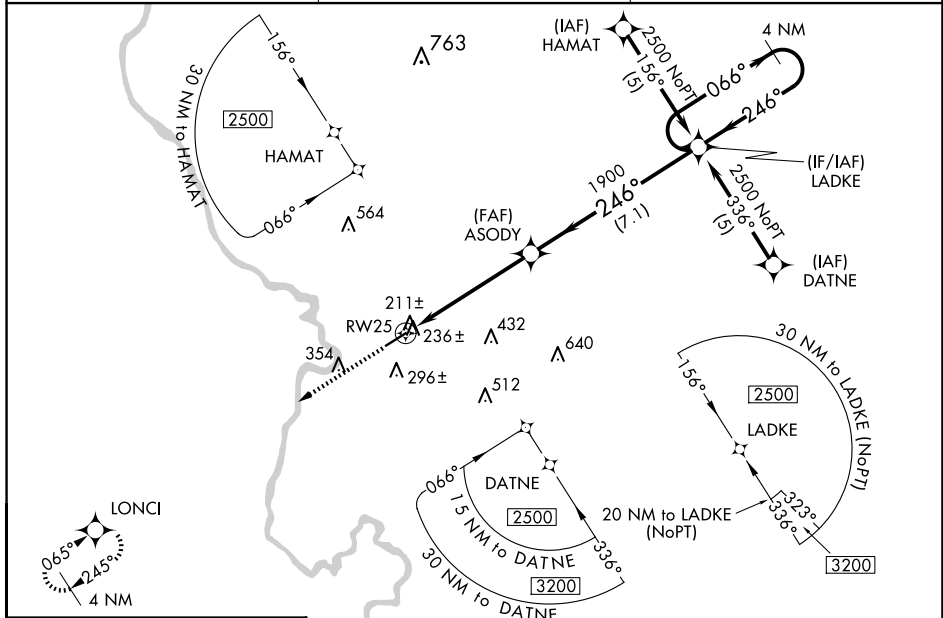
MARLBORO COUNTY JETPORT/H E AVENT FLD (BBP)

RNP APCH.

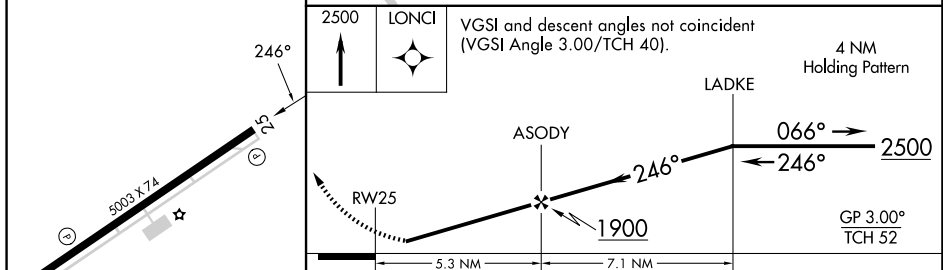
▼ Baro-VNAV NA when using Florence altimeter setting. For uncompensated Baro-VNAV systems, LNAV/VNAV NA below -15°C or above 47°C. Rwy 25 helicopter visibility reduction below 3/4 SM NA. When local altimeter setting not received, use Florence altimeter setting and increase all DA 61 feet and MDA 80 feet. Increase LPV all Cats, and LNAV Cat C and D visibility 1/4 mile.

MISSED APPROACH: Climb to 2500 direct LONCI and hold.

| | | |
|----------------------------|--|-------------------------------|
| AWOS-3PT 123.825 | FLORENCE APP CON * 118.6 341.7 | UNICOM 122.8 (CTAF) |
|----------------------------|--|-------------------------------|



| | |
|----------|----------|
| ELEV 147 | TDZE 147 |
|----------|----------|



| | | | |
|--------|--------|--|----------------------|
| 2500 | LONCI | VGSI and descent angles not coincident (VGSI Angle 3.00/TCH 40). | 4 NM Holding Pattern |
| ASODY | LADKE | 066° | 2500 |
| RW25 | ASODY | 246° | GP 3.00° TCH 52 |
| 5.3 NM | 7.1 NM | | |

| CATEGORY | A | B | C | D |
|--------------|-------|-------------|------------------------------|------------------------------|
| LPV DA | | 441-1 | 294 (300-1) | |
| LNAV/VNAV DA | | 621-1 3/4 | 474 (500-1 3/4) | |
| LNAV MDA | 680-1 | 533 (600-1) | 680-1 1/2 533 (600-1 1/2) | 680-1 3/4 533 (600-1 3/4) |

MIRL Rwy 7-25
REIL Rws 7 and 25

SE-2, 23 JAN 2025 to 20 FEB 2025

SE-2, 23 JAN 2025 to 20 FEB 2025