

|  |                        |   |
|--|------------------------|---|
| WAAS<br>CH <b>77818</b><br><b>W07A</b> | APP CRS<br><b>065°</b> | Rwy Idg <b>5003</b><br>TDZE <b>147</b><br>Apt Elev <b>147</b> |
|--|------------------------|---|

# RNAV (GPS) RWY 7

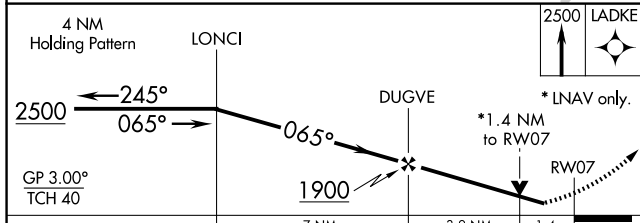
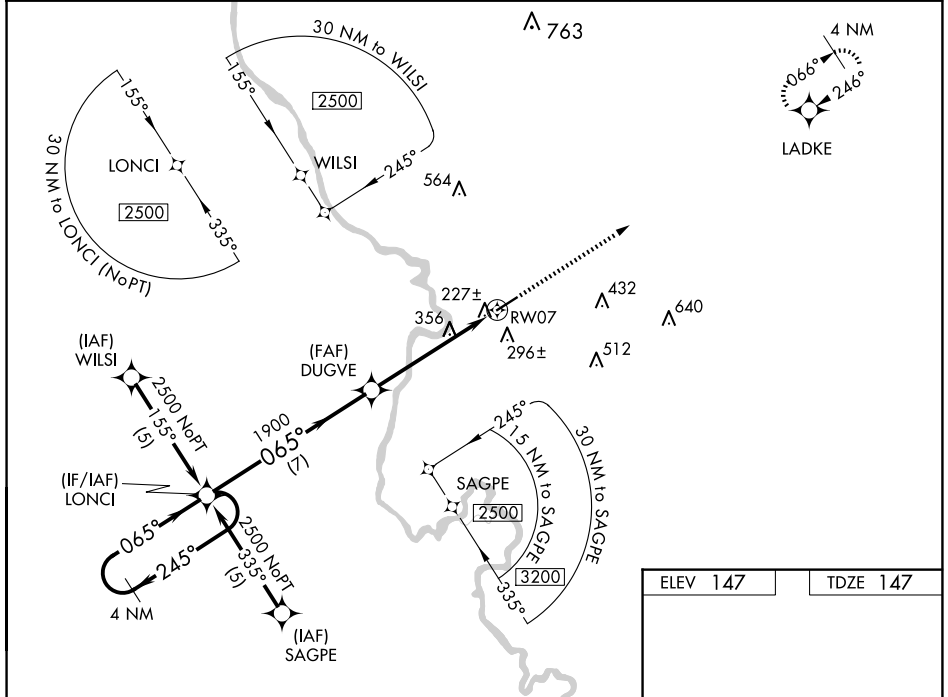
MARLBORO COUNTY JETPORT/H E AVENT FLD (B.B.P)

RNP APCH.

**⚠** Baro-VNAV NA when using Florence altimeter setting. For uncompensated Baro-VNAV systems, LNAV/VNAV NA below -15°C or above 48°C. Rwy 7 helicopter visibility reduction below ¾ SM NA. When local altimeter setting not received, use Florence altimeter setting and increase all DA 61 feet and MDA 80 feet; increase LPV all Cats, LNAV/VNAV all Cats, and LNAV Cats C and Cat D visibility ¼ mile. VDP NA with Florence altimeter setting.

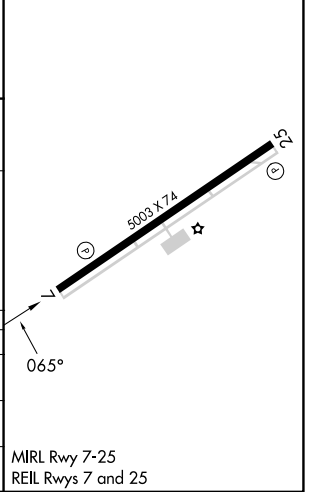
MISSED APPROACH: Climb to 2500 direct LADKE and hold.

|                            |  |                               |
|----------------------------|--|-------------------------------|
| AWOS-3PT<br><b>123.825</b> | FLORENCE APP CON ★<br><b>118.6 341.7</b> | UNICOM<br><b>122.8 (CTAF)</b> |
|----------------------------|--|-------------------------------|



|          |          |
|----------|----------|
| ELEV 147 | TDZE 147 |
|----------|----------|

| CATEGORY     | A                   | B                   | C                   | D |
|--------------|---------------------|---------------------|---------------------|---|
| LPV DA       | 437-1 290 (300-1)   |                     |                     |   |
| LNAV/VNAV DA | 507-1¼ 360 (400-1¼) |                     |                     |   |
| LNAV MDA     | 620-1 473 (500-1)   | 620-1¼ 473 (500-1¼) | 620-1½ 473 (500-1½) |   |



SE-2, 23 JAN 2025 to 20 FEB 2025

SE-2, 23 JAN 2025 to 20 FEB 2025