

LOC/DME I-ECH 109.3 Chan 30	APP CRS 115°	Rwy Idg TDZE 7500 92 Apt Elev 92
--	------------------------	---

ILS Y or LOC Y RWY 11

KETCHIKAN INTL (KTN)(PAKT)

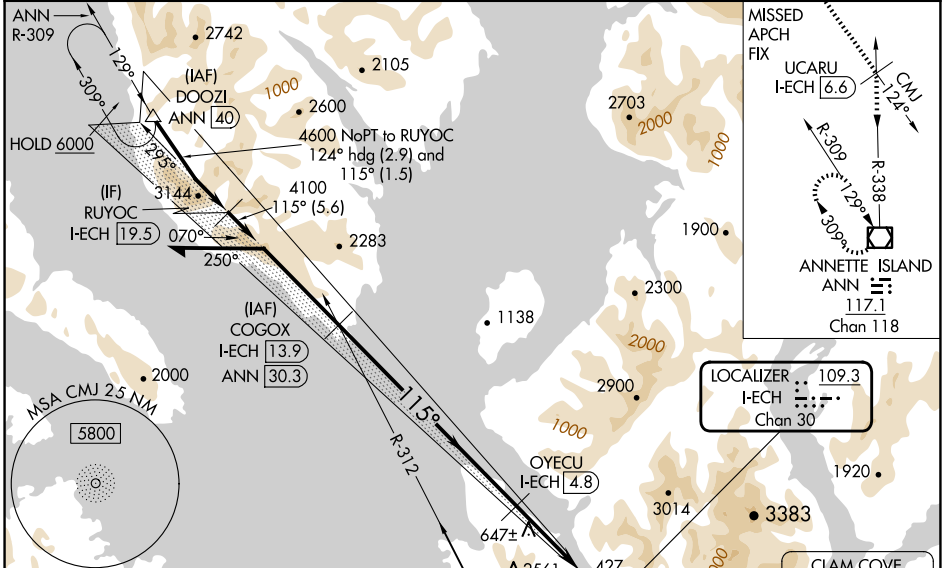
ADF required. DME required.

⚠ Rwy 11 helicopter visibility reduction below RVR 4000 NA. For inop ALS, increase #S-ILS 11 visibility to RVR 6000.
*RVR 1800 authorized with the use of FD or AP or HUD to DA.

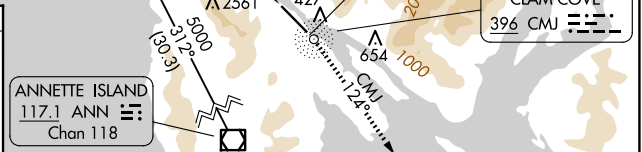
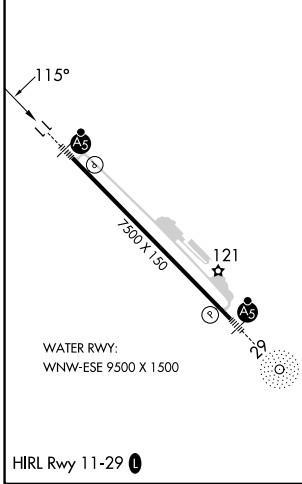
MALS R

MISSED APPROACH: Climb to 5100 direct CMJ NDB and on CMJ NDB bearing 124° to UCARU/I-ECH 6.6 DME and on ANN VOR/DME R-338 to ANN VOR/DME and hold, continue climb-in-hold to 5100.
*Missed approach requires minimum climb of 305 feet per NM to 4000; if unable to meet climb gradient, see LOC X RWY 11.
#Missed approach requires minimum climb of 270 feet per NM to 4000; if unable to meet climb gradient, see LOC X RWY 11.
Missed approach requires minimum climb of 235 feet per NM to 4000; if unable to meet climb gradient, see LOC X RWY 11.

AFIS 134.45	ANCHORAGE CENTER 118.5 284.6	KETCHIKAN RADIO 123.6 (CTAF)
------------------------------	---	---



ELEV 92	TDZE 92
---------	---------



Use I-ECH DME when on the localizer course.	COGOX I-ECH 13.9	5100 CMJ	UCARU I-ECH 6.6	ANN R-338	ANN
Remain within 10 NM	4100	CMJ 124°	I-ECH 4	I-ECH 1.4	
GS 3.00°	4600	OYECU I-ECH 4.8			
TCH 50	4100				
		9.1 NM	0.8	2.6 NM	
CATEGORY	A	B	C	D	
S-ILS 11*		312/24	220 (300-½)		
S-ILS 11#		481/35	389 (400-¾)		
S-LOC 11	980/40	888 (900-¾)	980-2	888 (900-2)	

AK, 26 DEC 2024 to 20 FEB 2025

AK, 26 DEC 2024 to 20 FEB 2025