

LOC/DME I-ECH <b>109.3</b> Chan 30	APP CRS <b>115°</b>	Rwy Idg <b>7500</b> TDZE <b>92</b> Apt Elev <b>92</b>
--	------------------------	---

# LOC X RWY 11

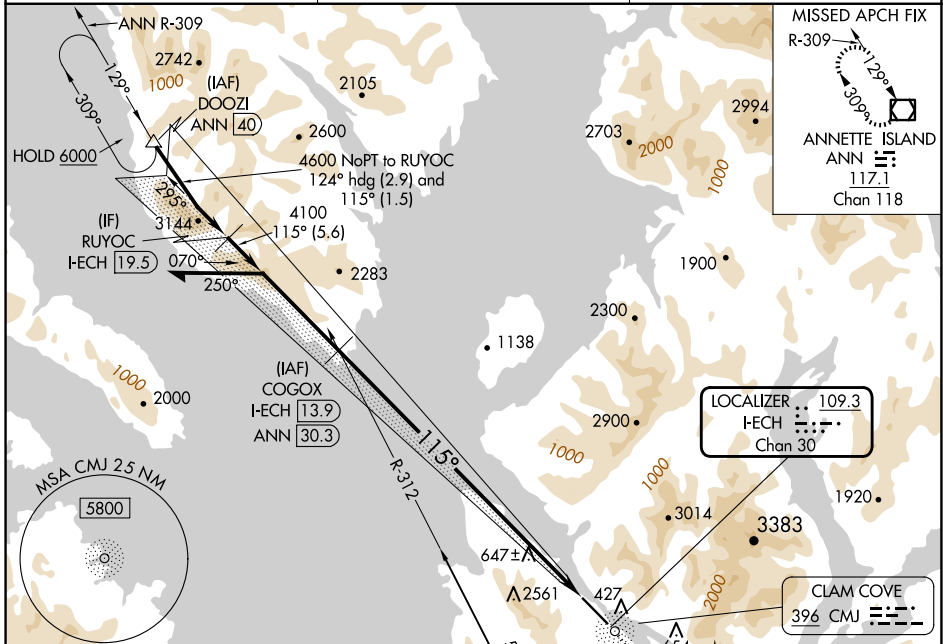
KETCHIKAN INTL (KTN)(PAKT)

DME required. ADF required.

MALS R

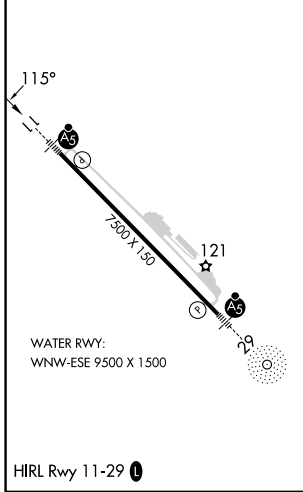
MISSED APPROACH: Climb to 5000 direct CMJ NDB then on CMJ NDB bearing 124° to UCARU/I-ECH 6.6 DME and on ANN VOR/DME R-338 to ANN VOR/DME and hold.

AFIS <b>134.45</b>	ANCHORAGE CENTER <b>118.5 284.6</b>	KETCHIKAN RADIO <b>123.6 (CTAF) 0</b>
-----------------------	--	--



ELEV 92	TDZE 92
---------	---------

Procedure NA for arrival on ANN VOR/DME airway radials 280 CW 309.



Procedure NA for arrival on ANN VOR/DME airway radials 280 CW 309.

ANNETTE ISLAND 117.1 ANN Chan 118

Remain within 10 NM

COGOX I-ECH 13.9

5000 CMJ

UCARU CMJ 124° I-ECH 6.6

ANN R-338

ANN

4600

295°

115°

4100

3.00° TCH 50

I-ECH 6.6

I-ECH 1.4

7.3 NM

5.2 NM

CATEGORY	A	B	C	D
S-11	1780-1¼ 1688 (1700-1¼)	1780-1½ 1688 (1700-1½)	1780-3	1688 (1700-3)
CIRCLING	2100-1¼ 2008 (2100-1¼)	2640-1½ 2548 (2600-1½)	3020-3 2928 (3000-3)	3300-3 3208 (3300-3)

AK, 26 DEC 2024 to 20 FEB 2025

AK, 26 DEC 2024 to 20 FEB 2025