

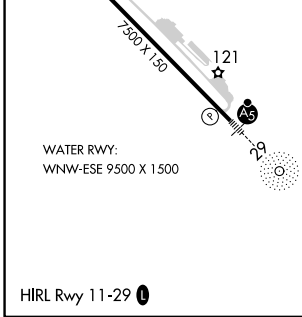
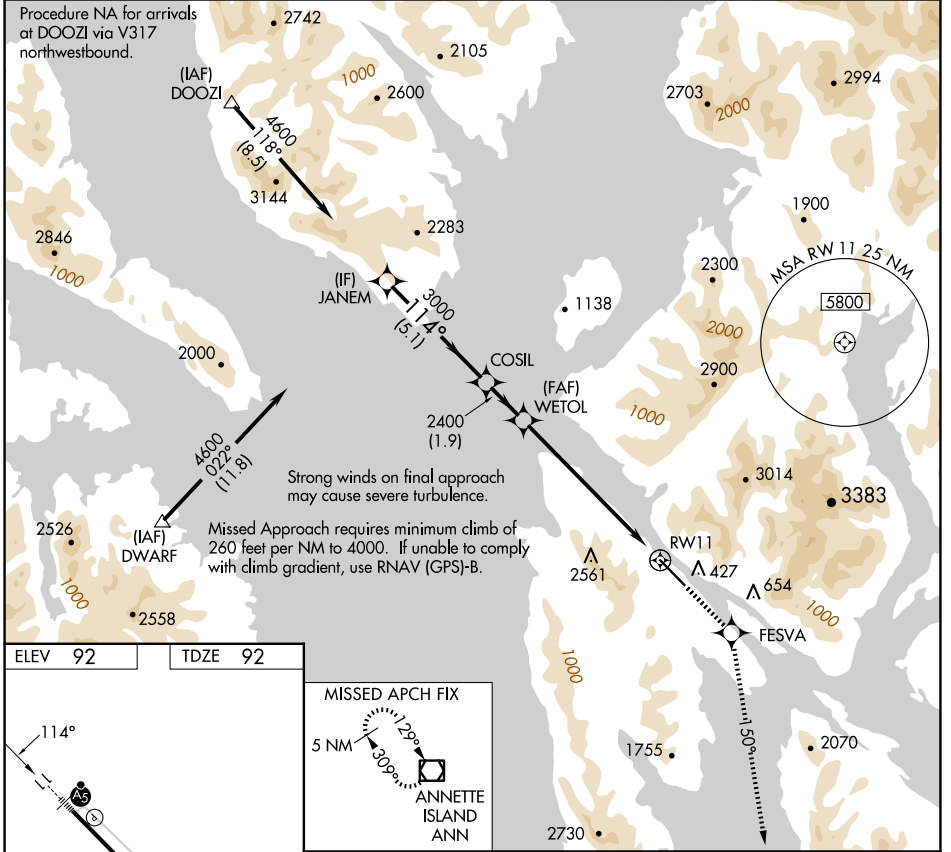
WAAS CH 58009 W11A	APP CRS 114°	Rwy Idg TDZE Apt Elev	7500 92 92
--	------------------------	-----------------------------	---------------------------------------

RNAV (GPS) RWY 11

KETCHIKAN INTL (KTN)(PAKT)

RNP APCH-GPS.	MALSR	MISSED APPROACH: Climb to 5000 direct FESVA and on 150° track to ANN VOR/DME and hold.
NA For inoperative ALS, increase LPV DA visibility to RVR 6000.	AS	

AFIS 134.45	ANCHORAGE CENTER 118.5 284.6	KETCHIKAN RADIO 123.6 (CTAF)
-----------------------	--	--



ELEV 92	TDZE 92	MISSED APCH FIX																									
		<table border="1"> <tr> <td>Procedure Turn NA</td> <td>JANEM</td> <td>COSIL</td> <td>WETOL</td> <td>5000</td> <td>FESVA</td> <td>150° tr</td> <td>ANN</td> </tr> <tr> <td colspan="2">4600</td> <td colspan="2">3000</td> <td colspan="2">2400</td> <td colspan="2">RWY 11</td> </tr> <tr> <td colspan="2">5.1 NM</td> <td colspan="2">1.9 NM</td> <td colspan="2">6.8 NM</td> <td colspan="2"></td> </tr> </table>		Procedure Turn NA	JANEM	COSIL	WETOL	5000	FESVA	150° tr	ANN	4600		3000		2400		RWY 11		5.1 NM		1.9 NM		6.8 NM			
Procedure Turn NA	JANEM	COSIL	WETOL	5000	FESVA	150° tr	ANN																				
4600		3000		2400		RWY 11																					
5.1 NM		1.9 NM		6.8 NM																							
GP 3.00° TCH 50																											
CATEGORY	A	B	C	D																							
LPV DA	442/40			350 (400-3/4)		NA																					

AK, 26 DEC 2024 to 20 FEB 2025

AK, 26 DEC 2024 to 20 FEB 2025