

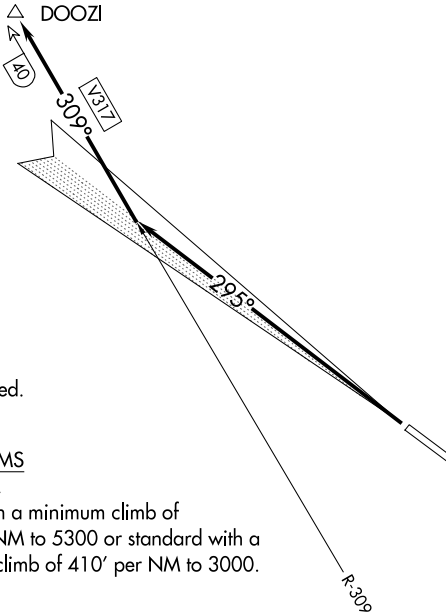
(SKOWL2.DOOZI) 24137

# SKOWL TWO DEPARTURE (OBSTACLE)

AL-6053 (FAA)

KETCHIKAN INTL (KTN)(PAKT)  
KETCHIKAN, ALASKA

ANCHORAGE CENTER  
118.5 284.6  
KETCHIKAN RADIO  
123.6 (CTAF)



LOCALIZER 109.3  
I-ECH  
Chan 30

ANNETTE ISLAND  
117.1 ANN  
Chan 118

NOTE: DME required.

### TAKEOFF MINIMUMS

Rwy 11: NA - ATC.

Rwy 29: 800-3 with a minimum climb of 275' per NM to 5300 or standard with a minimum climb of 410' per NM to 3000.

### TAKEOFF OBSTACLE NOTES

- Rwy 29: Trees beginning 428' from DER, 549' left of centerline, up to 121' MSL.
- Trees beginning 671' from DER, 572' left of centerline, up to 135' MSL.
- Tree 2370' from DER, 1093' left of centerline, 147' MSL.
- Tree 2728' from DER, 989' left of centerline, 154' MSL.
- Trees beginning 2787' from DER, 1089' left of centerline, up to 164' MSL.
- Tree 3059' from DER, 1264' left of centerline, 188' MSL.
- Trees beginning 3195' from DER, 971' left of centerline, up to 194' MSL.
- Trees beginning 3558' from DER, 1125' left of centerline, up to 220' MSL.
- Trees beginning 3658' from DER, 1243' left of centerline, up to 234' MSL.
- Trees beginning 3754' from DER, 840' left of centerline, up to 238' MSL.
- Trees beginning 5550' from DER, 1591' left of centerline, up to 250' MSL.
- Tree 6050' from DER, 1934' left of centerline, 252' MSL.
- Trees beginning 6070' from DER, 1883' left of centerline, up to 284' MSL.
- Tree 1.9 NM from DER, 3275' left of centerline, 390' MSL.
- Tree 2 NM from DER, 3284' left of centerline, 415' MSL.
- Tree 2 NM from DER, 3381' left of centerline, 462' MSL.
- Tree 2.2 NM from DER, 4085' left of centerline, 100' AGL/576' MSL.
- Trees beginning 2.2 NM from DER, 2371' left of centerline, up to 607' MSL.
- Trees beginning 2.3 NM from DER, 3644' left of centerline, up to 100' AGL/622' MSL.
- Trees beginning 2.3 NM from DER, 2461' left of centerline, up to 640' MSL.
- Trees beginning 2.3 NM from DER, 2432' left of centerline, up to 647' MSL.
- Tree 2.3 NM from DER, 4153' left of centerline, 100' AGL/658' MSL.
- Trees beginning 2.3 NM from DER, 2171' left of centerline, up to 783' MSL.
- Trees beginning 2.4 NM from DER, 2456' left of centerline, up to 866' MSL.

NOTE: Chart not to scale.

### DEPARTURE ROUTE DESCRIPTION

TAKEOFF RUNWAY 29: Climb to assigned altitude on I-ECH localizer NW course (29.5°) to intercept/join ANN VOR/DME R-309/V317 to DOOZI/40 DME before proceeding on course.

# SKOWL TWO DEPARTURE (OBSTACLE)

(SKOWL2.DOOZI) 19JUL18

KETCHIKAN, ALASKA  
KETCHIKAN INTL (KTN)(PAKT)

AK, 26 DEC 2024 to 20 FEB 2025

AK, 26 DEC 2024 to 20 FEB 2025