

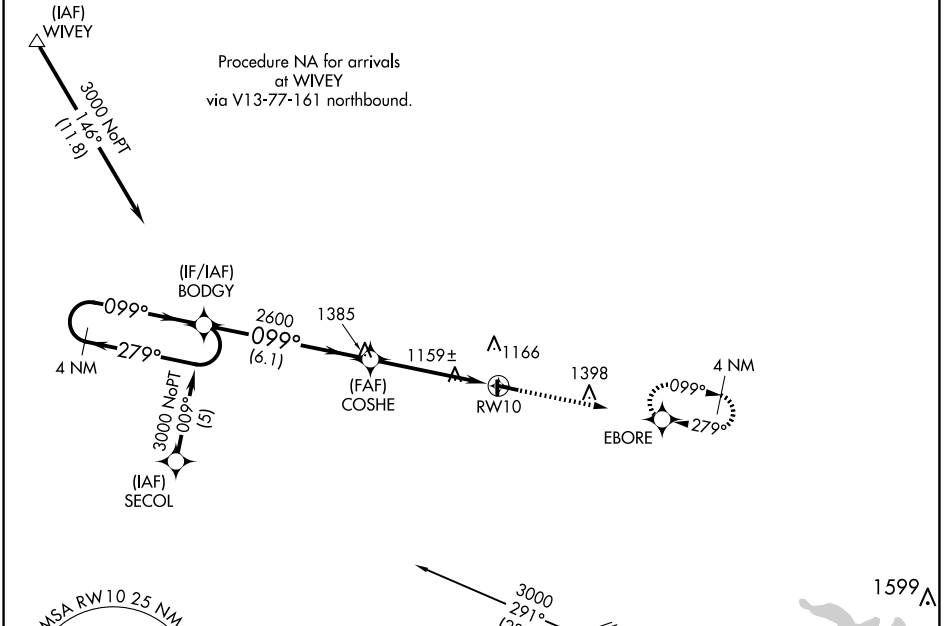
APP CRS	Rwy Idg	4000
099°	TDZE	1046
	Apt Elev	1051

RNAV (GPS) RWY 10

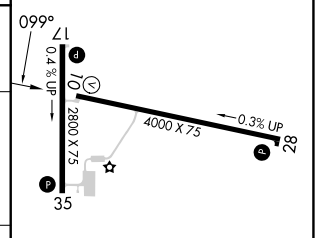
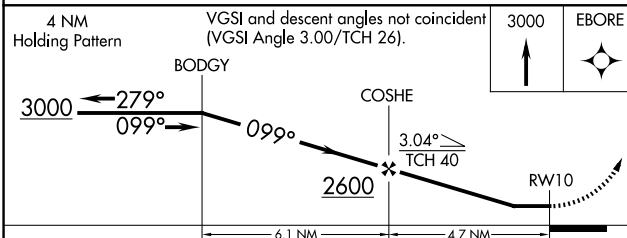
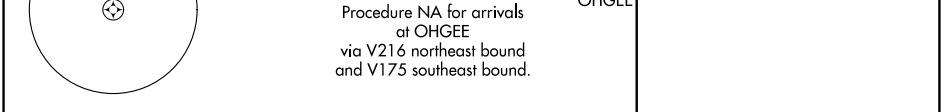
CHARITON MUNI (CNC)

RNP APCH.	When local altimeter setting not received, use Lomoni altimeter setting and increase all MDA 100 feet. Procedure NA at night. Rwy 10 helicopter visibility reduction below 1 SM NA.	MISSED APPROACH: Climb to 3000 direct EBORE and hold.
-----------	---	--

AWOS-3 125.525	DES MOINES APP CON 123.9 360.7	UNICOM 122.8 (CTAF) 0
--------------------------	--	---------------------------------



ELEV 1051	TDZE 1046
-----------	-----------



CATEGORY	A	B	C	D
RNAV MDA	1440-1	394 (400-1)		NA
CIRCLING	1540-1	489 (500-1)		NA

REIL Rwy 10, 17, 28 and 35 0
MIRL Rwy 10-28 and 17-35 0

NC-3, 23 JAN 2025 to 20 FEB 2025

NC-3, 23 JAN 2025 to 20 FEB 2025