

# LURIC EIGHT DEPARTURE (RNAV)

AWOS-3  
119.325  
CTAF  
123.0  
HOUSTON DEP CON  
119.7 281.4

**TOP ALTITUDE: ASSIGNED BY ATC**

NOTE: RADAR required.  
NOTE: DME/DME/IRU or GPS required.  
NOTE: RNAV 1.

### TAKEOFF MINIMUMS

Rwys 16, 34: Standard with minimum  
climb of 500' per NM to 660.

### DEPARTURE ROUTE DESCRIPTION

**TAKEOFF RUNWAY 16:** Climb on heading 157°  
to 1400 for RADAR vectors to KNTKY, thence . . .

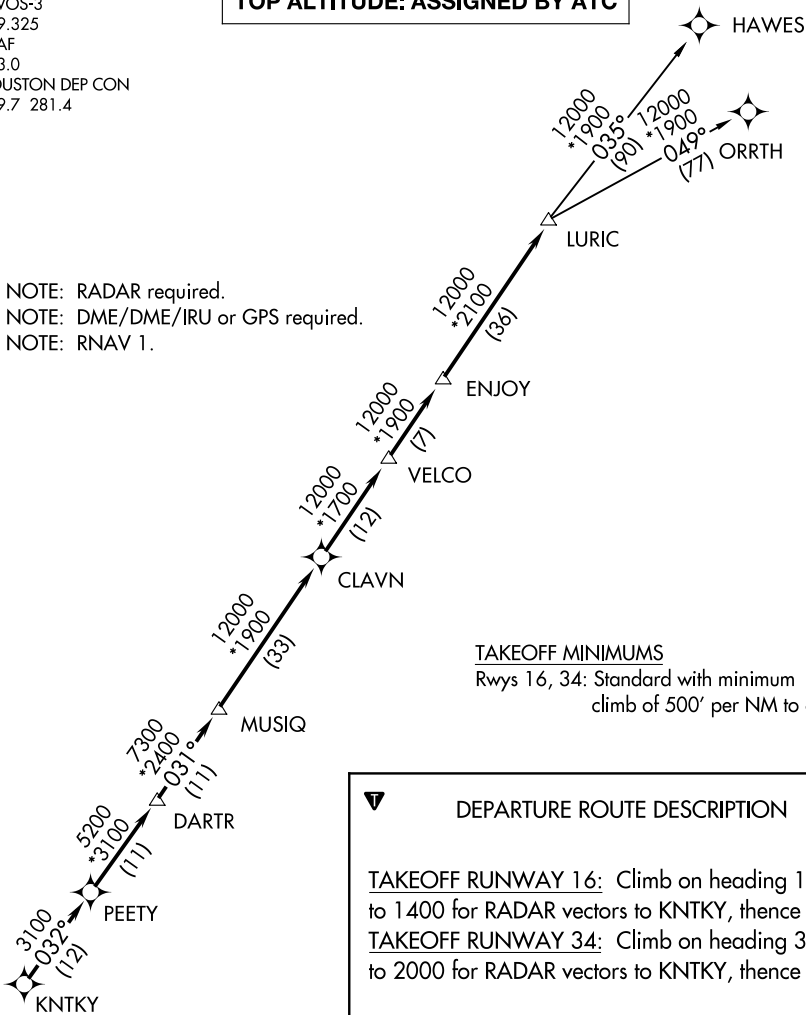
**TAKEOFF RUNWAY 34:** Climb on heading 312°  
to 2000 for RADAR vectors to KNTKY, thence . . .

. . . on track 032° to PEETY, then on track 032° to  
DARTR, then on track 031° to MUSIQ, then on track  
031° to CLAVN, then on track 031° to VELCO, then  
on track 031° to ENJOY, then on track 031° to LURIC,  
then on (transition). Maintain ATC assigned altitude.  
Expect filed altitude 10 minutes after departure.

HAWES TRANSITION (LURIC8.HAWES)

ORRTH TRANSITION (LURIC8.ORRTH)

NOTE: Chart not to scale.



SC-5, 23 JAN 2025 to 20 FEB 2025

SC-5, 23 JAN 2025 to 20 FEB 2025