

WYLSN EIGHT DEPARTURE (RNAV)

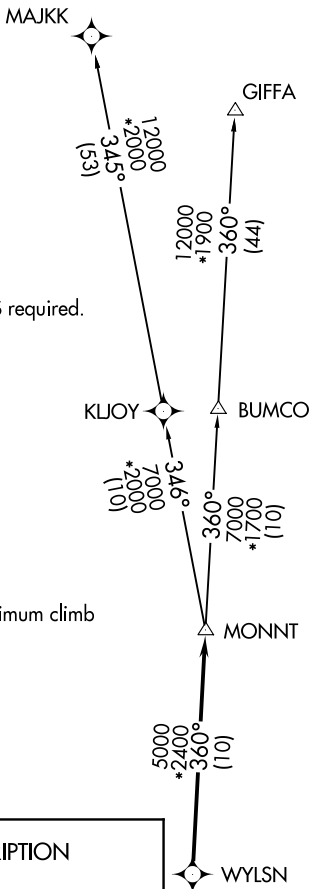
AWOS-3
119.325
CTAF
123.0
HOUSTON DEP CON
119.7 281.4

**TOP ALTITUDE:
ASSIGNED BY ATC**

NOTE: RADAR required.
NOTE: DME/DME/IRU or GPS required.
NOTE: RNAV 1.

TAKEOFF MINIMUMS

Rwy 16, 34: Standard with minimum climb of 500' per NM to 660.



DEPARTURE ROUTE DESCRIPTION

TAKEOFF RUNWAY 16: Climb on heading 157° to 1400 for RADAR vectors to WYLSN, thence. . . .

TAKEOFF RUNWAY 34: Climb on heading 312° to 2000 for RADAR vectors to WYLSN, thence. . . .

. . . .on track 360° to MONNT, then on (transition). Maintain ATC assigned altitude. Expect filed altitude 10 minutes after departure.

GIFFA TRANSITION (WYLSN8.GIFFA)
MAJKK TRANSITION (WYLSN8.MAJKK)



NOTE: Chart not to scale.

WYLSN EIGHT DEPARTURE (RNAV)