

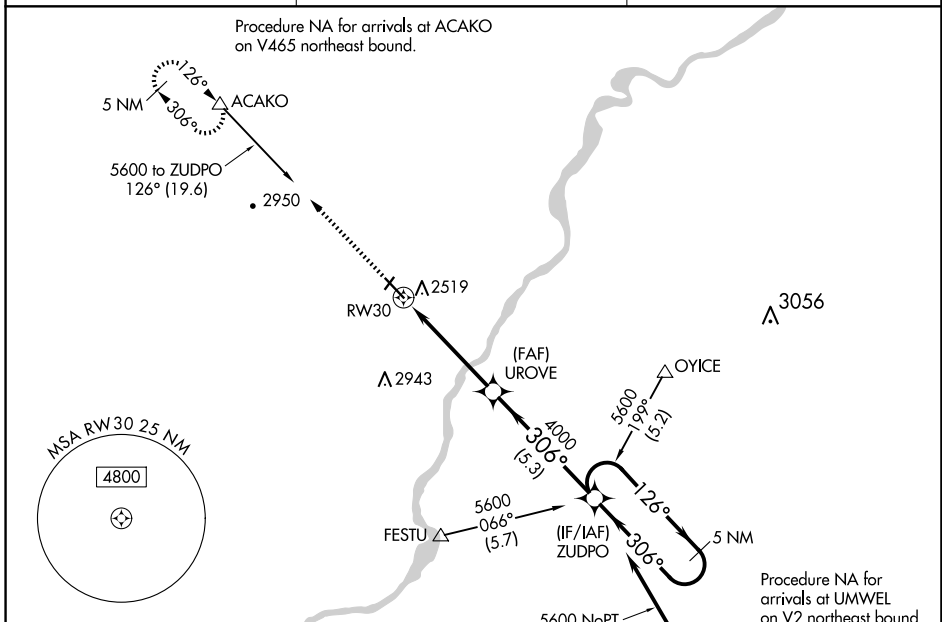
WAAS CH 86623 W30A	APP CRS 306°	Rwy Idg TDZE 2456 Apt Elev 2458
--	------------------------	---

RNAV (GPS) RWY 30

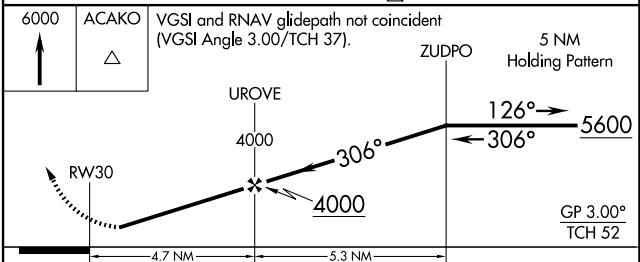
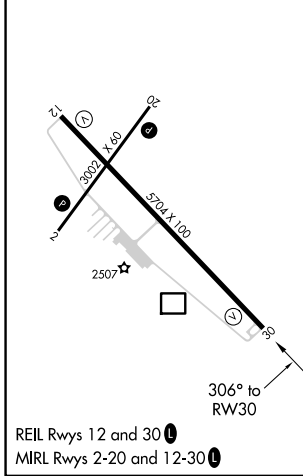
DAWSON COMMUNITY (GDV)

RNP APCH.	MISSED APPROACH: Climb to 6000 direct ACAKO and hold, continue climb-in-hold to 6000.
<p>▼ For uncompensated Baro-VNAV systems, LNAV/VNAV NA below -19°C or above 28°C. When local altimeter setting not received, procedure NA. Rwy 30 helicopter visibility reduction below 3/4 SM NA.</p>	

AWOS-3PT 135.075	SALT LAKE CENTER 126.85 305.2	UNICOM 122.8 (CTAF) ①
----------------------------	---	---------------------------------



ELEV 2458	D	TDZE 2456
-----------	----------	-----------



CATEGORY	A	B	C	D
LPV DA		2706-1	250 (300-1)	
LNAV/VNAV DA		2706-1	250 (300-1)	
LNAV MDA		2780-1	324 (400-1)	
CIRCLING	2840-1 382 (400-1)	2920-1 462 (500-1)	3280-2½ 822 (900-2½)	3280-2¾ 822 (900-2¾)

NW-1, 23 JAN 2025 to 20 FEB 2025

NW-1, 23 JAN 2025 to 20 FEB 2025