

(ESTRR5.ESTRR) 24081

AL-6081 (FAA)

GASTONIA MUNI (AKH)  
GASTONIA, NORTH CAROLINA

# ESTRR FIVE DEPARTURE (RNAV)

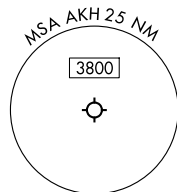
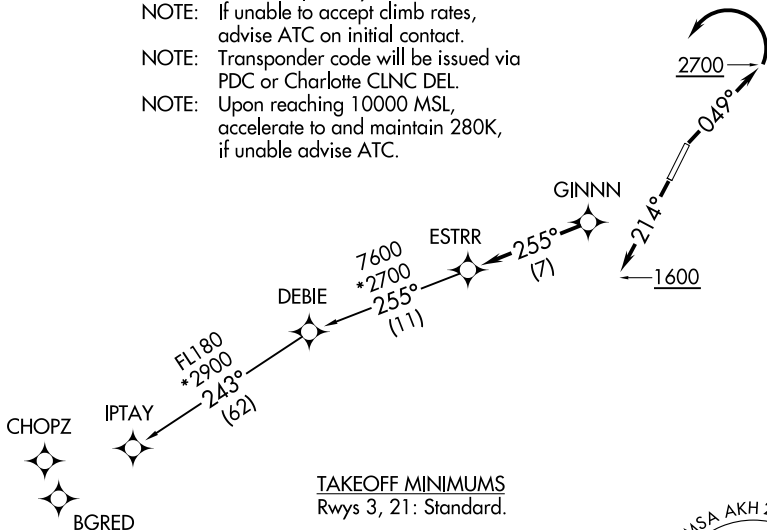
CHARLOTTE DEP CON  
120.05 257.2  
ASOS  
135.725  
CLNC DEL  
127.2  
UNICOM (CTAF)  
123.0

RNAV 1 - DME/DME/IRU or GPS.

RADAR required.

**TOP ALTITUDE:  
3000**

- NOTE: For turbo jets only.
- NOTE: If unable to accept climb rates, advise ATC on initial contact.
- NOTE: Transponder code will be issued via PDC or Charlotte CLNC DEL.
- NOTE: Upon reaching 10000 MSL, accelerate to and maintain 280K, if unable advise ATC.



NOTE: Chart not to scale.

SE-2, 23 JAN 2025 to 20 FEB 2025

SE-2, 23 JAN 2025 to 20 FEB 2025



## DEPARTURE ROUTE DESCRIPTION

TAKEOFF RUNWAY 3: Climb on heading 049° to 2700 before turning left, then on heading assigned by ATC, thence. . . .

TAKEOFF RUNWAY 21: Climb on heading 214° to 1600 before proceeding north, then on heading assigned by ATC, thence. . . .

. . . .on RADAR vectors to GINNN, then on track 255° to ESTRR, then on IPTAY Transition. Maintain 3000, expect clearance to filed altitude within 10 minutes after departure.

IPTAY TRANSITION (ESTRR5.IPTAY)

# ESTRR FIVE DEPARTURE (RNAV)

(ESTRR5.ESTRR) 21MAR24

GASTONIA, NORTH CAROLINA  
GASTONIA MUNI (AKH)