

(KER4.KER) 24081  
**KERMIT FOUR DEPARTURE**

AL-6081 (FAA)

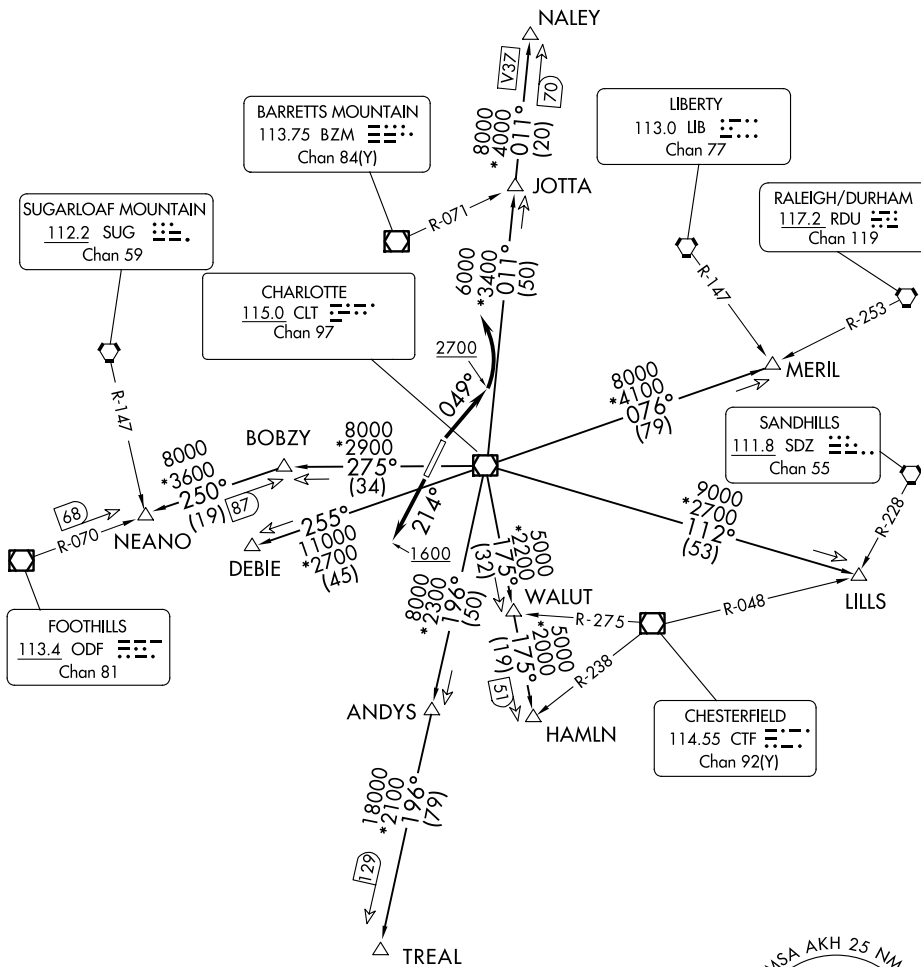
GASTONIA MUNI (AKH)  
 GASTONIA, NORTH CAROLINA

CHARLOTTE DEP CON  
 120.05 257.2  
 ASOS  
 135.725  
 CLNC DEL  
 127.2  
 UNICOM  
 123.0

RADAR and DME required.

**TOP ALTITUDE:  
 3000**

TAKEOFF MINIMUMS  
 Rwy 3, 21: Standard.



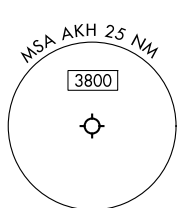
SE-2, 23 JAN 2025 to 20 FEB 2025

SE-2, 23 JAN 2025 to 20 FEB 2025

NOTE: For turbo jet aircraft only.  
 NOTE: Upon reaching 10000 MSL, accelerate to and maintain 280K, if unable advise ATC.  
 NOTE: Transponder code will be issued via Charlotte clearance delivery.

NOTE: Chart not to scale.

(CONTINUED ON FOLLOWING PAGE)



**KERMIT FOUR DEPARTURE**  
 (KER4.KER) 21MAR24

GASTONIA, NORTH CAROLINA  
 GASTONIA MUNI (AKH)

# KERMIT FOUR DEPARTURE



## DEPARTURE ROUTE DESCRIPTION

TAKEOFF RUNWAY 3: Climb on heading 049° to 2700, before turning left, thence . . . .

TAKEOFF RUNWAY 21: Climb on heading 214° to 1600 before proceeding north, thence . . . .

. . . . on RADAR vectors to intercept filed/assigned transition or enroute fix/navaid. Maintain 3000, expect filed altitude/flight level 10 minutes after departure.

ANDYS TRANSITION (KER4.ANDYS): From over CLT VOR/DME on CLT R-196 to ANDYS.

DEBIE TRANSITION (KER4.DEBIE): From over CLT VOR/DME on CLT R-255 to DEBIE.

HAMLN TRANSITION (KER4.HAMLN): From over CLT VOR/DME on CLT R-175 to HAMLN.

JOTTA TRANSITION (KER4.JOTTA): From over CLT VOR/DME on CLT R-011 to JOTTA.

LILLS TRANSITION (KER4.LILLS): From over CLT VOR/DME on CLT R-112 to LILLS.

MERIL TRANSITION (KER4.MERIL): From over CLT VOR/DME on CLT R-076 to MERIL.

NALEY TRANSITION (KER4.NALEY): From over CLT VOR/DME on CLT R-011 to NALEY.

NEANO TRANSITION (KER4.NEANO): From over CLT VOR/DME on CLT R-275 to BOBZY, then on ODF R-070 to NEANO.

TREAL TRANSITION (KER4.TREAL): From over CLT VOR/DME on CLT R-196 to TREAL.

SE-2, 23 JAN 2025 to 20 FEB 2025

SE-2, 23 JAN 2025 to 20 FEB 2025